

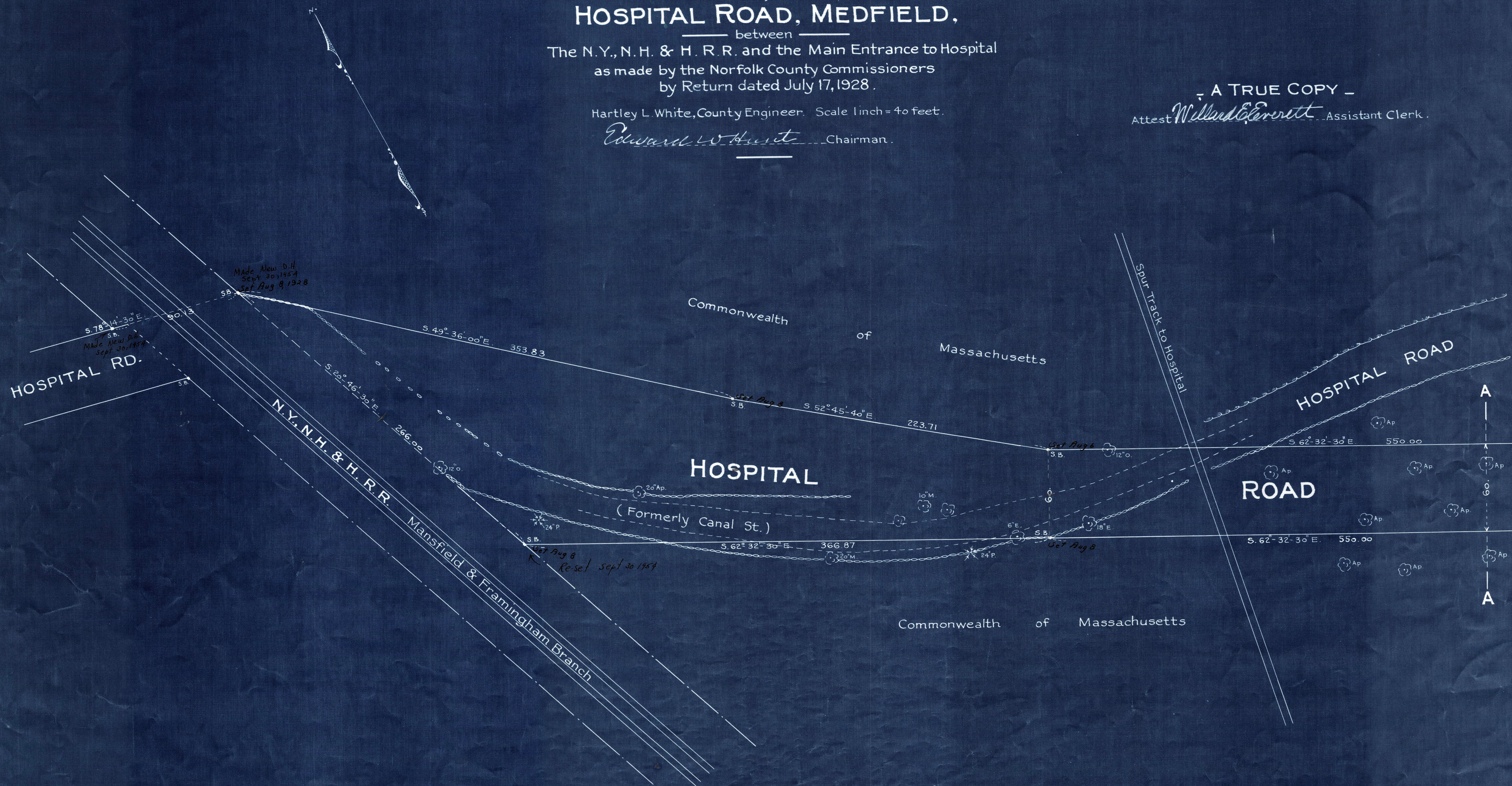
Plan showing the Relocation and Widening
 of
HOSPITAL ROAD, MEDFIELD,
 between
 The N.Y., N.H. & H. R.R. and the Main Entrance to Hospital
 as made by the Norfolk County Commissioners
 by Return dated July 17, 1928.

Hartley L. White, County Engineer. Scale 1 inch = 40 feet.

Edward L. White Chairman.

- A TRUE COPY -

Attest *Willard Everett* Assistant Clerk.



Date of Entry July 18, 1928