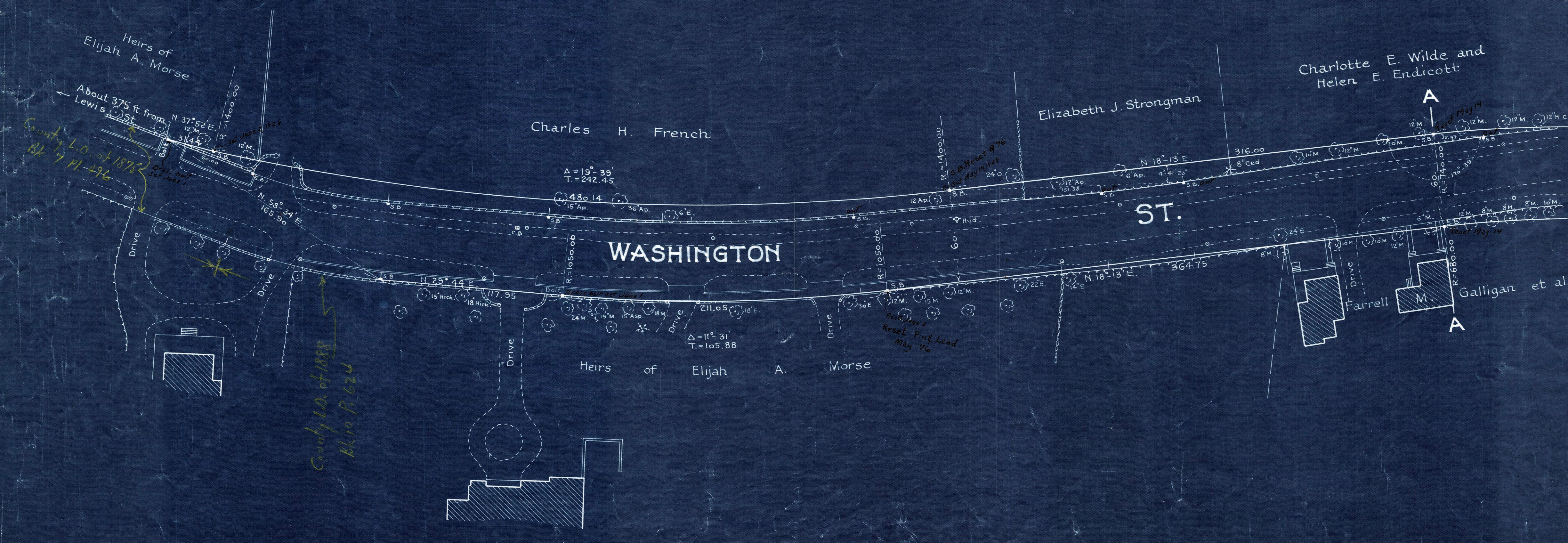


Plan showing the Relocation and Widening  
of  
**WASHINGTON ST., CANTON**  
from a point about 375 ft. North of Lewis St. to Randolph St.  
as made by the Norfolk County Commissioners  
by Decree dated May 1, 1928.

Hartley L. White, County Engineer. Scale 1 inch = 40 feet.

*Ernest Richardson*, Chairman.

A TRUE COPY  
Attest *RB Worthington*, Clerk.



Note: Poles indicated thus: o

*Date of Entry May 13, 1928*