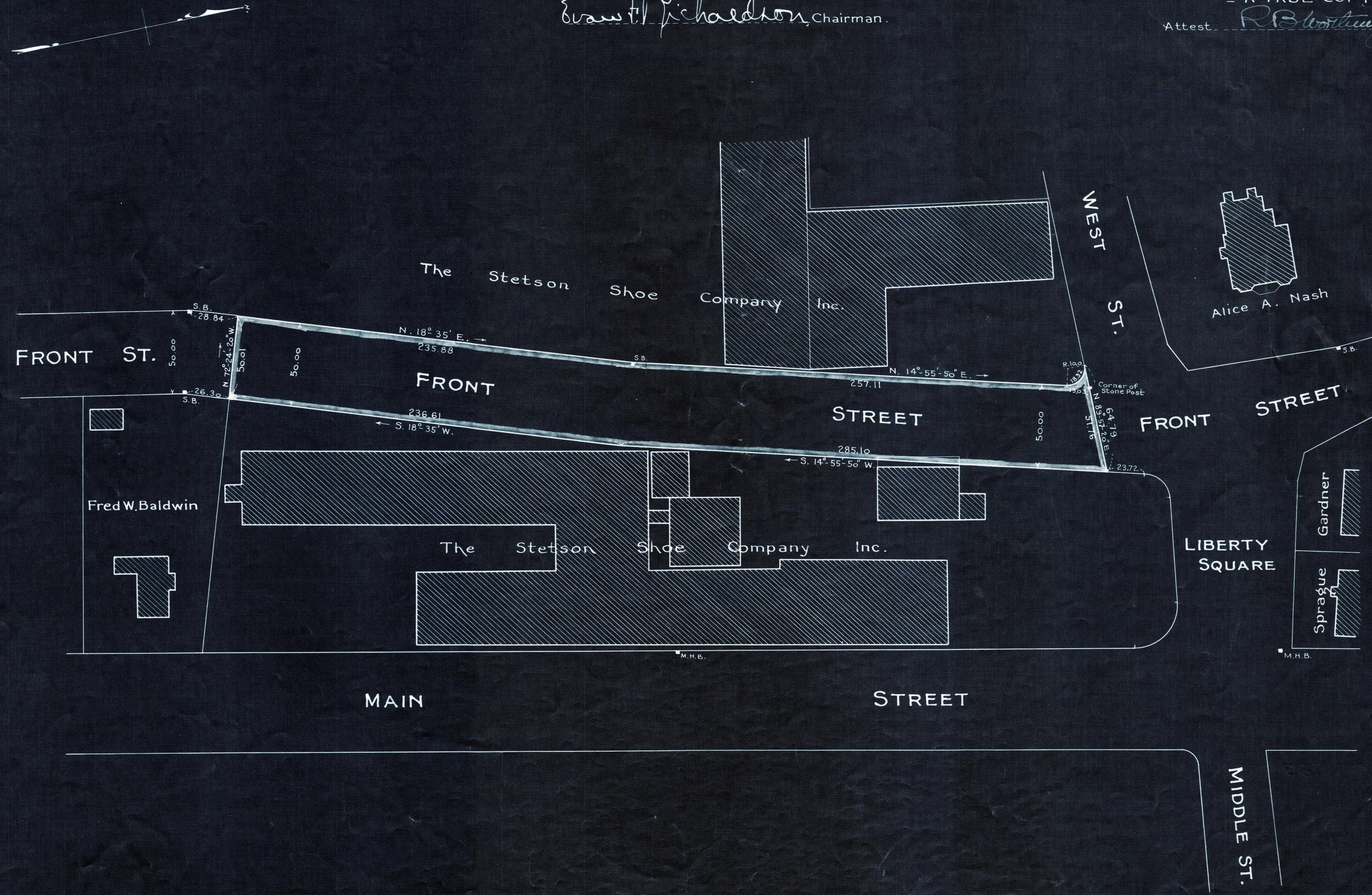


Plan showing Discontinuance
of a portion of
FRONT ST., WEYMOUTH
as made by the Norfolk County Commissioners
by Decree dated Feb. 7, 1928.

Hartley L. White, County Engineer. Scale 1 inch = 40 feet.
Evans H. Richardson, Chairman.

- A TRUE COPY -
Attest *R.B. Worthington*, Clerk.



No Entry Needed