

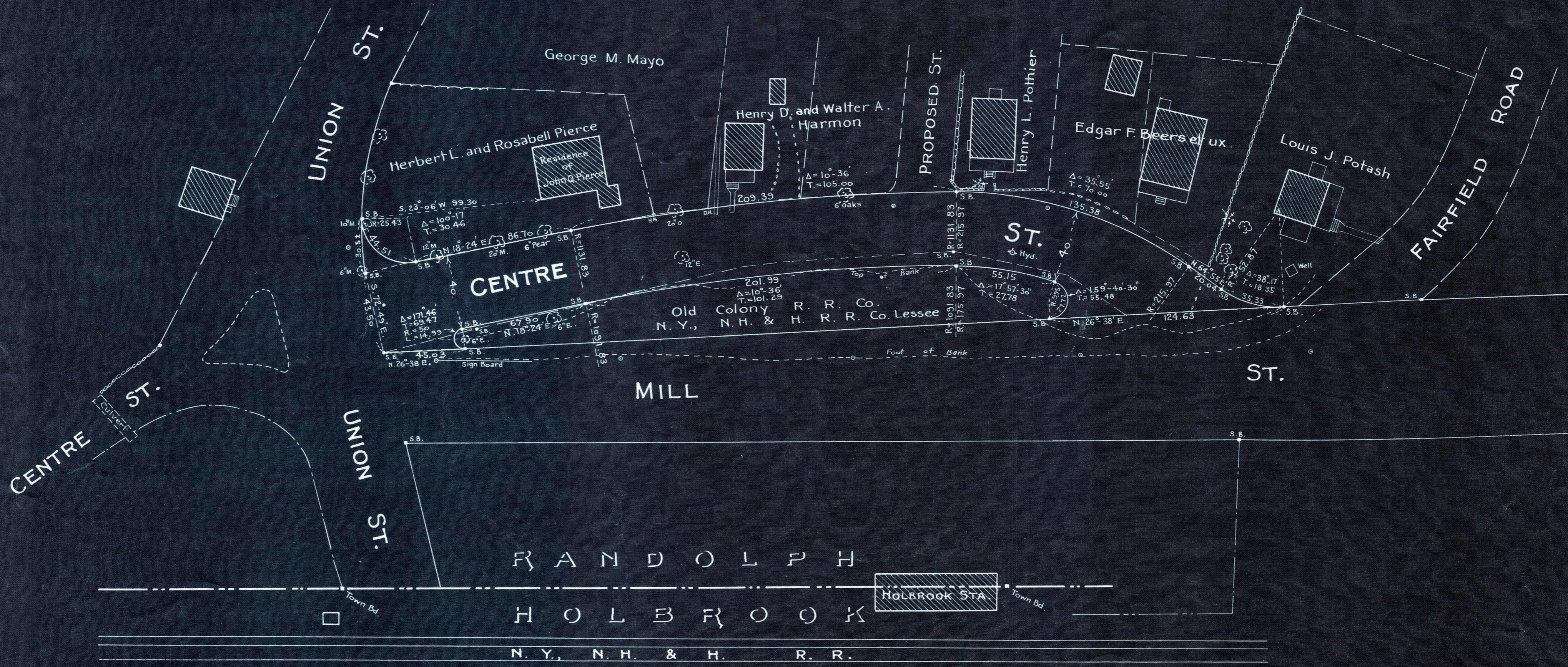
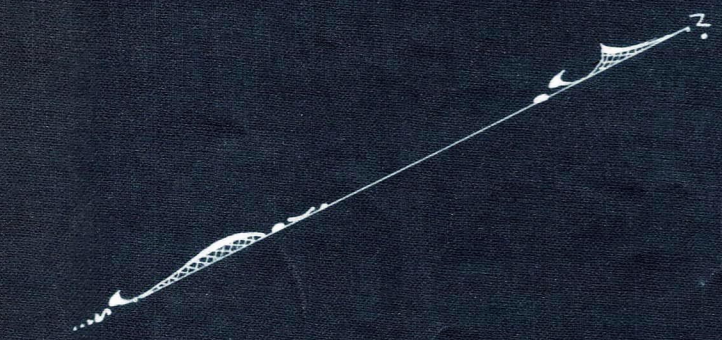
Plan showing the Layout of the Extension
of
CENTRE STREET
as a New Way between Union and Mill Sts.
in the
TOWN OF RANDOLPH

as made by the Norfolk County Commissioners
by Decree dated Dec. 20, 1927.

Hartley L. White, County Engineer. Scale 1 inch = 40 feet.

Ernest Richardson, Chairman

A TRUE COPY
R. B. Boothman Clerk



Note: Poles indicated thus: \circ

Date of Entry: Sept. 28, 1928