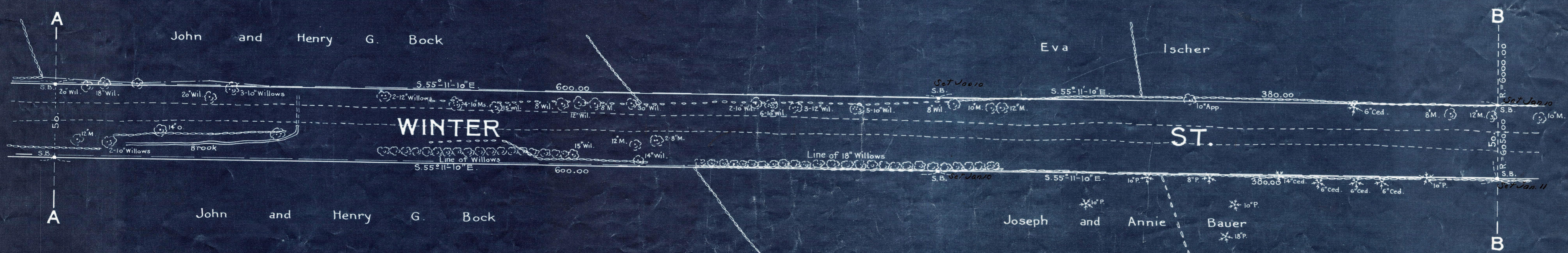
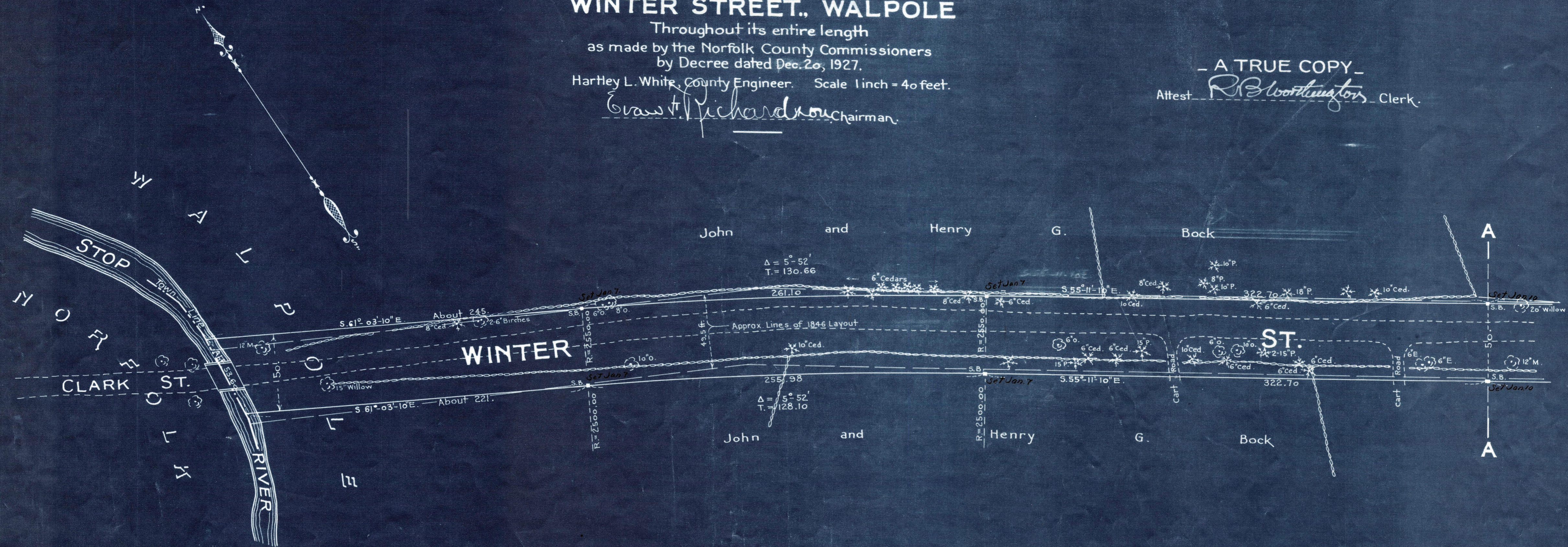


Plan showing the Relocation and Widening of WINTER STREET, WALPOLE

Throughout its entire length
as made by the Norfolk County Commissioners
by Decree dated Dec. 20, 1927.
Hartley L. White, County Engineer. Scale 1 inch = 40 feet.
Ernest J. Richardson, Chairman.

- A TRUE COPY -
Attest *R. B. Worthington*, Clerk.



Note: Poles indicated thus: \odot

Date of Entry: May 11, 1928