

Plan showing the Relocation and Widening of SOUTH STREET, BRAINTREE

Washington St. and the Holbrook Town Line
at Division St.

as made by the Norfolk County Commissioners
by Decree dated Nov. 29, 1927.

Hartley L. White, County Engineer. Scale 1 inch = 40 feet.

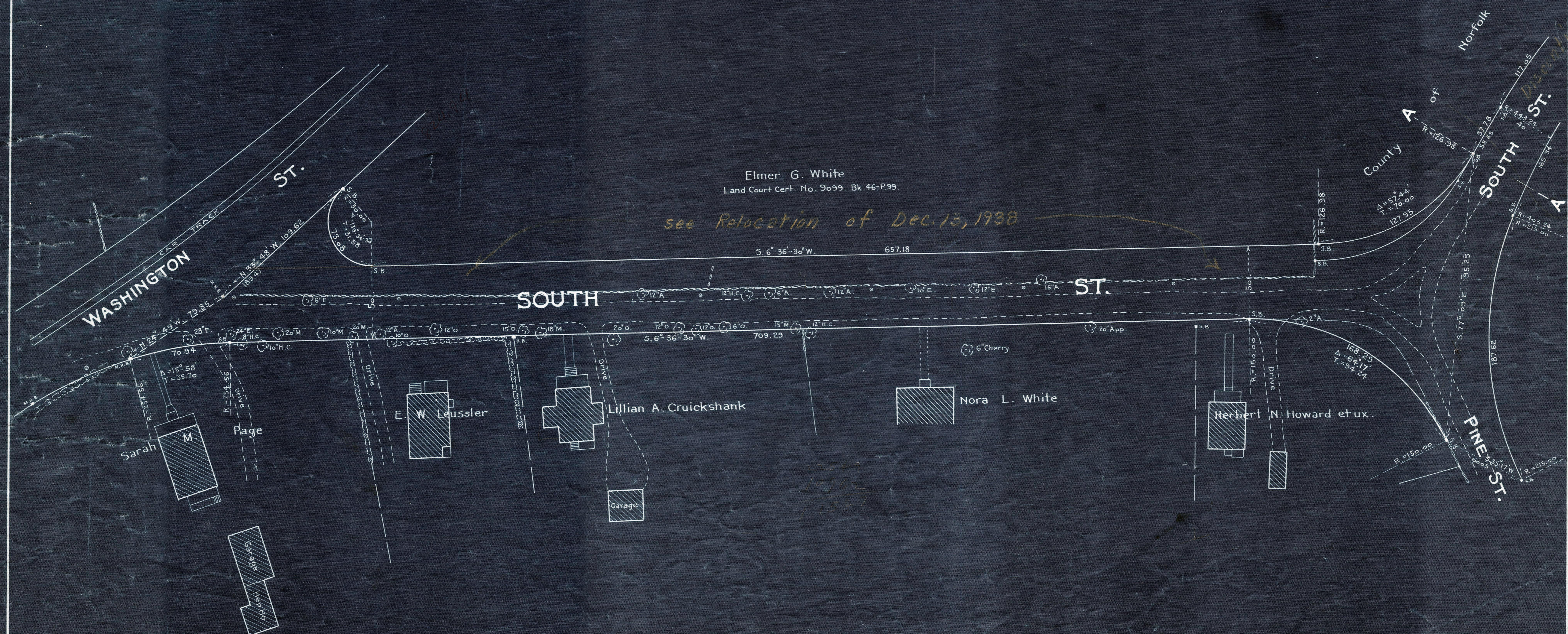
Erant Richardson Chairman.

- A TRUE COPY -

Attest: *R. B. Worthington* Clerk.



Being filed in 1774-810



Note. Poles indicated thus: ◦