

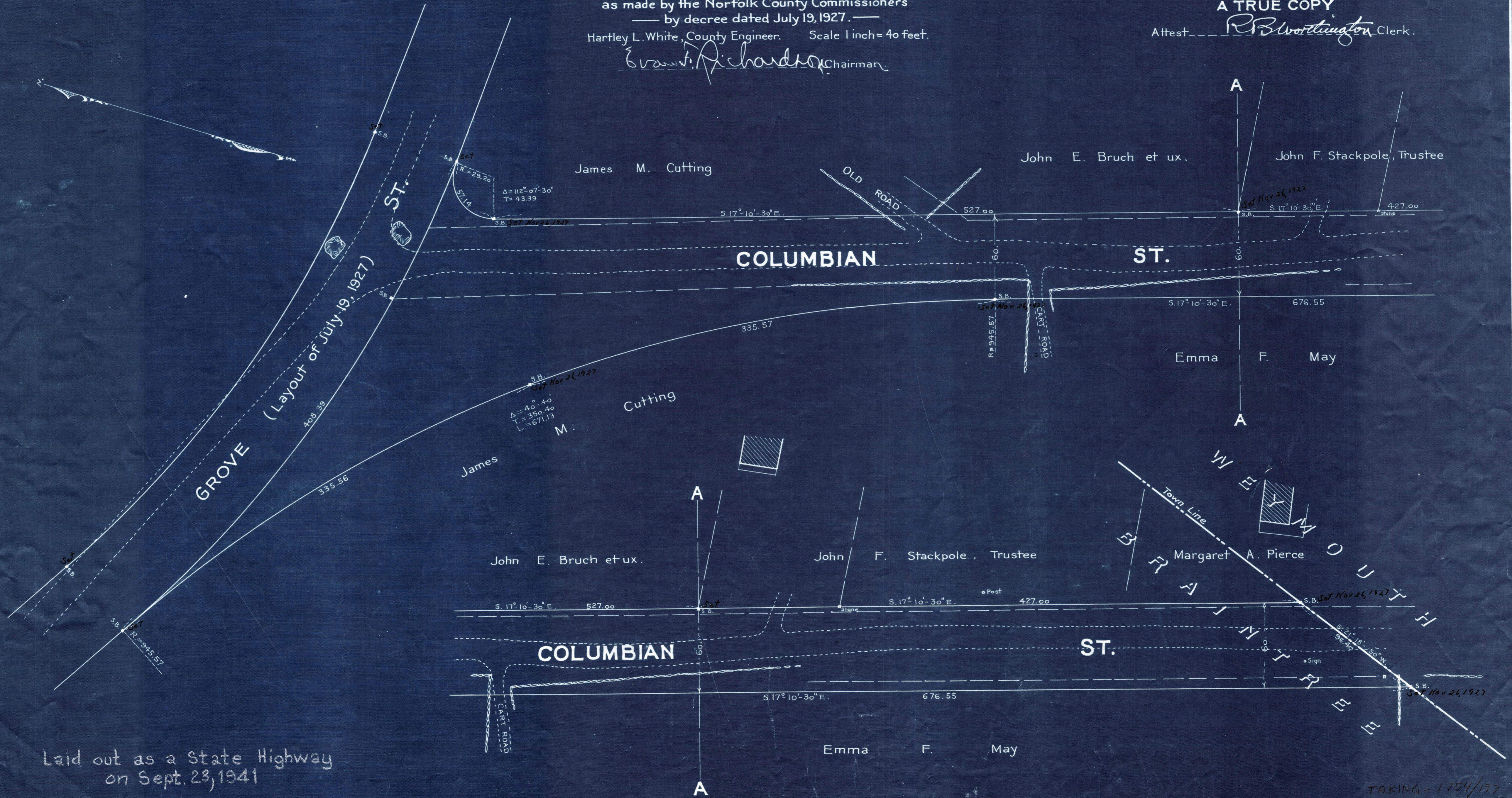
Plan showing the Relocation and Widening  
of  
**COLUMBIAN ST., BRAINTREE**  
from Grove St. to the Weymouth Town Line,  
as made by the Norfolk County Commissioners  
by decree dated July 19, 1927.

Hartley L. White, County Engineer. Scale 1 inch = 40 feet.

*Braintree Richardson* Chairman

A TRUE COPY

Attest *R. B. Worthington* Clerk.



Laid out as a State Highway  
on Sept. 23, 1941

TAKING - 1754/197  
P.B. - 107 - #640  
REC - July 20, 1927

Date of Entry Aug 10, 1927.