

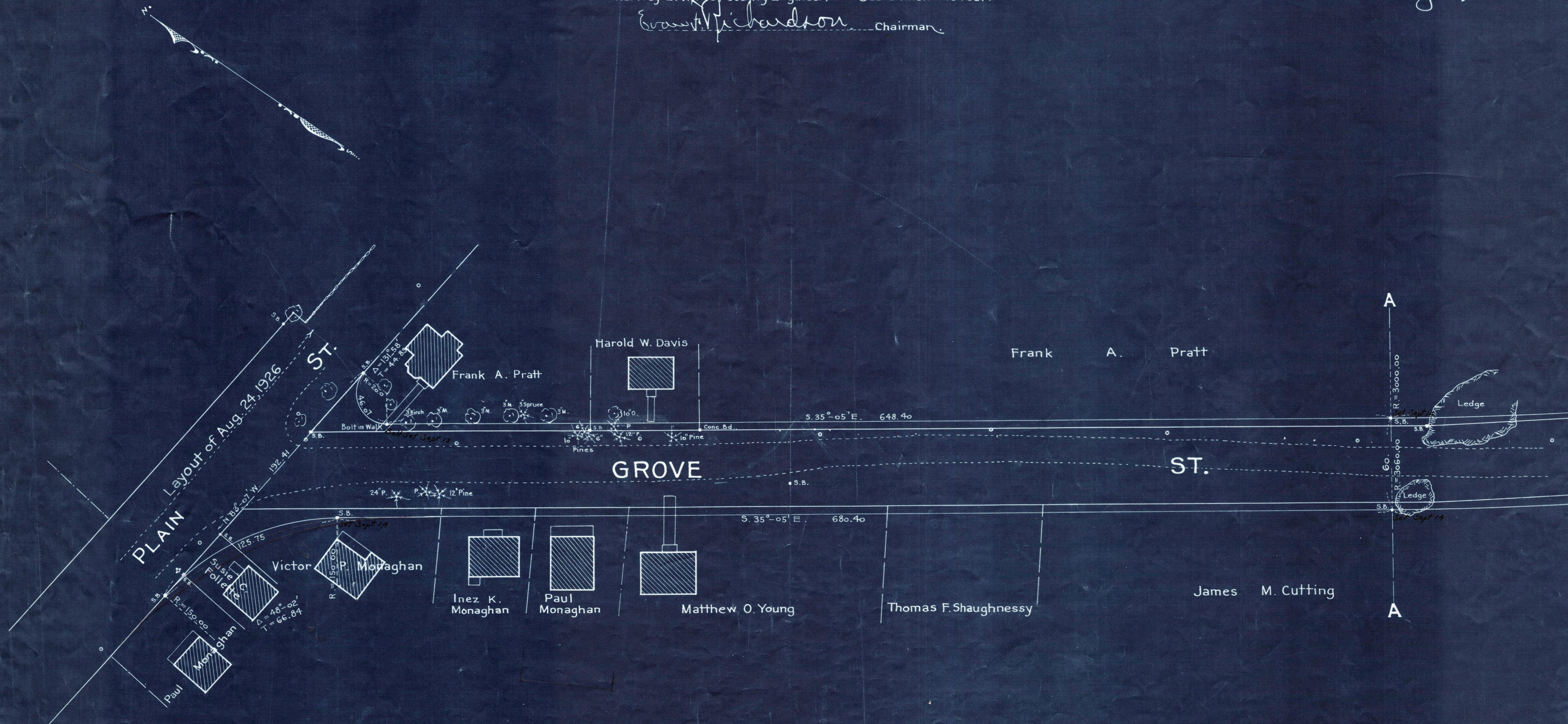
Plan showing the Relocation and Widening
of
GROVE ST., BRAINTREE
from Plain St. to the Weymouth Town Line
as made by the Norfolk County Commissioners
by decree dated July 19, 1927.

Hartley L. White, County Engineer. Scale 1 inch = 40 feet.

Ernest Richardson Chairman

A TRUE COPY

Attest *R. B. Worthington* Clerk



Note - Poles indicated thus: \circ

Laid out as a State Highway
on Sept. 23, 1941

TAKING - 1755-401
P.B. - 107-635-9 of 27
REC. - June 29 1927

Date of Entry Aug 10, 1927