

# Plan showing the Relocation and Widening of POND STREET, NORFOLK

from North St. to Dedham St.

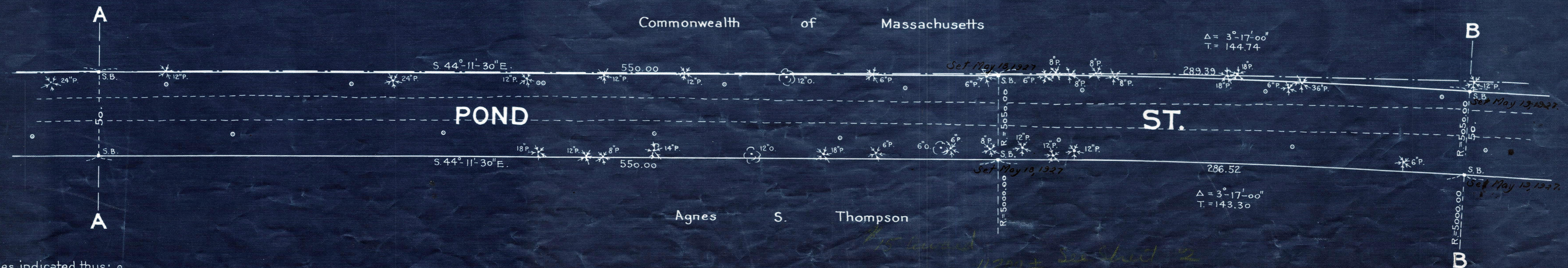
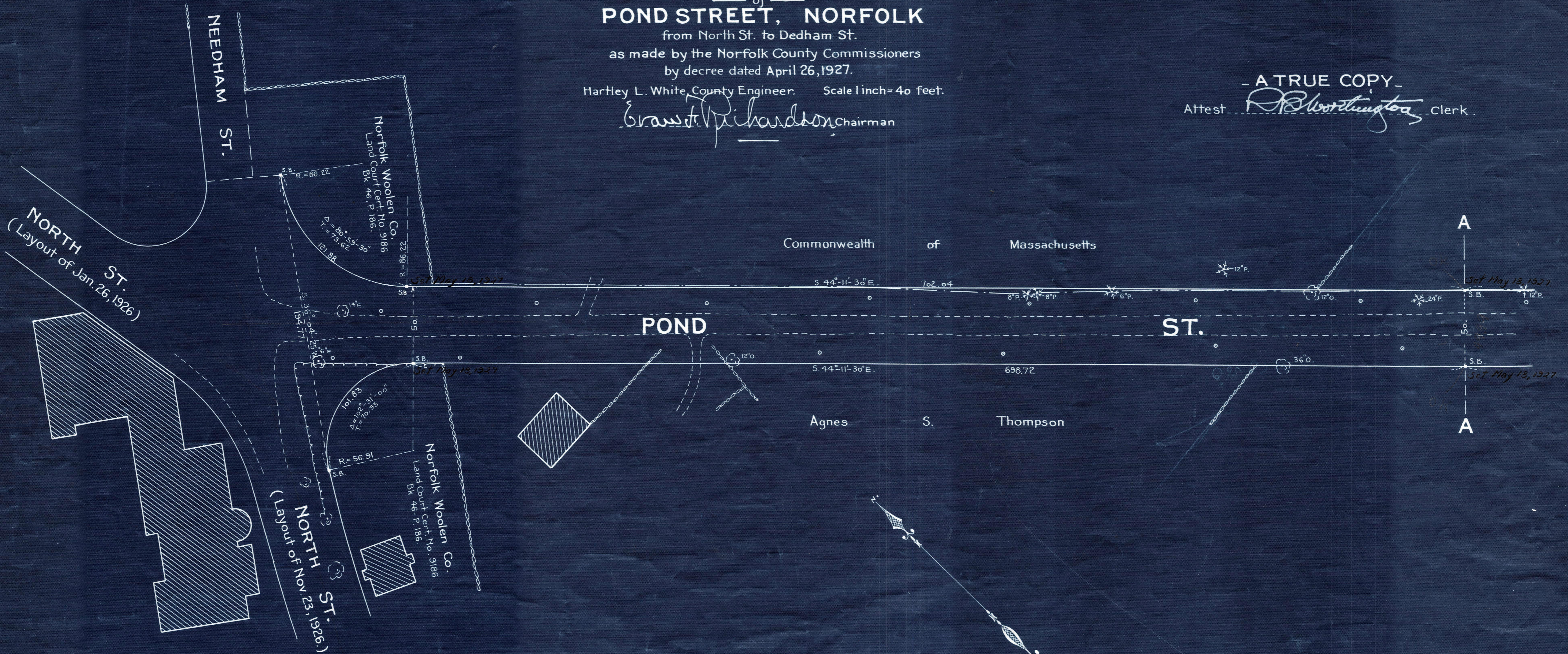
as made by the Norfolk County Commissioners  
by decree dated April 26, 1927.

Hartley L. White, County Engineer. Scale 1 inch = 40 feet.

*Grant Richardson* Chairman

- A TRUE COPY -

Attest *R. B. Worthington* Clerk.



Note - Poles indicated thus: ◦

Date of Entry May 6, 1927