

Plan showing the Relocation and Widening  
of  
**MAIN STREET, MEDFIELD,**  
from North St. to the Dover Town Line,  
as made by the Norfolk County Commissioners.

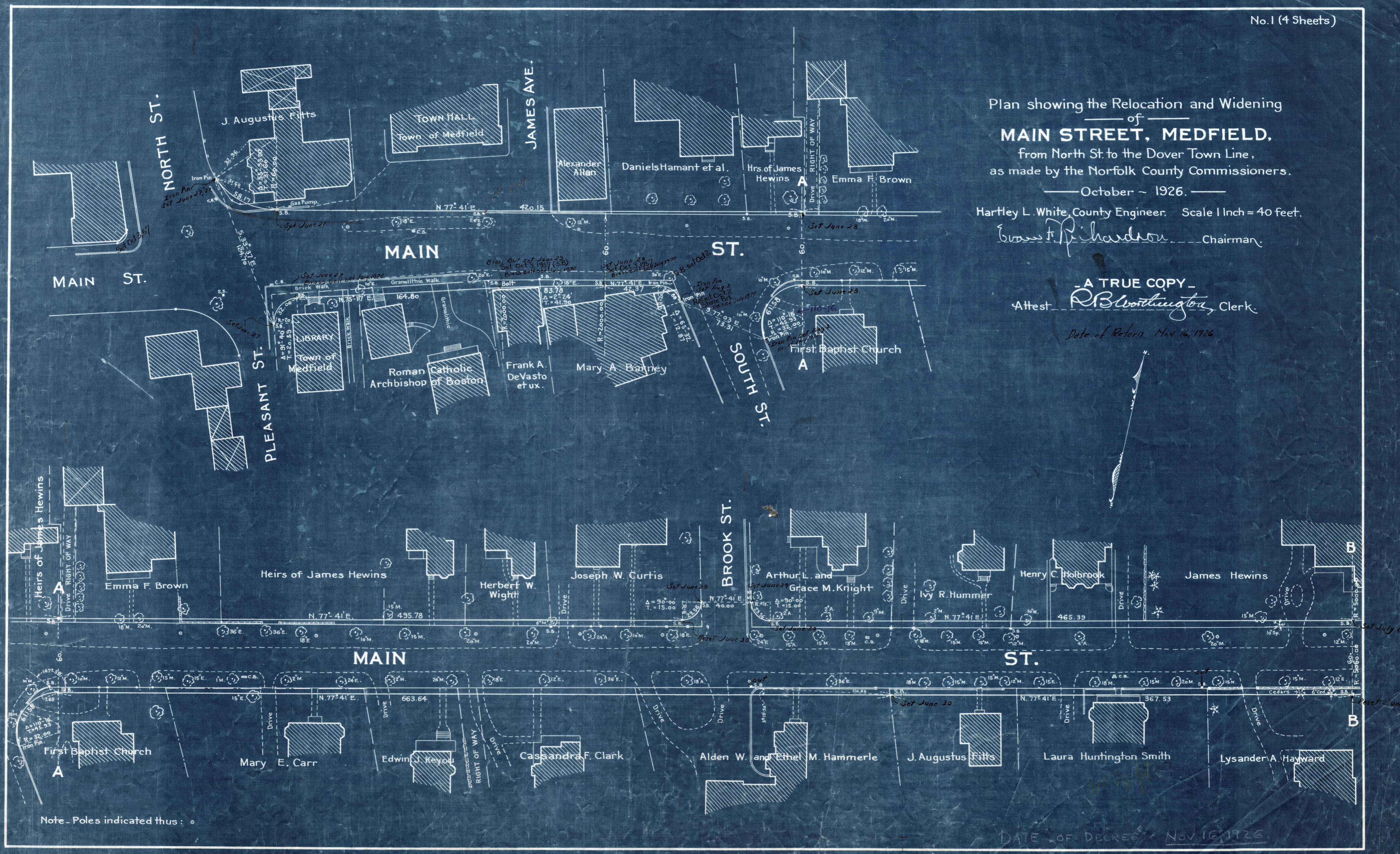
October - 1926.

Hartley L. White, County Engineer. Scale 1 Inch = 40 feet.

*Wm. F. Richardson* Chairman.

A TRUE COPY -  
Attest *R. B. Worthington* Clerk.

Date of Return Nov. 16, 1926



Note - Poles indicated thus: ○

DATE OF DECREE NOV. 16, 1926