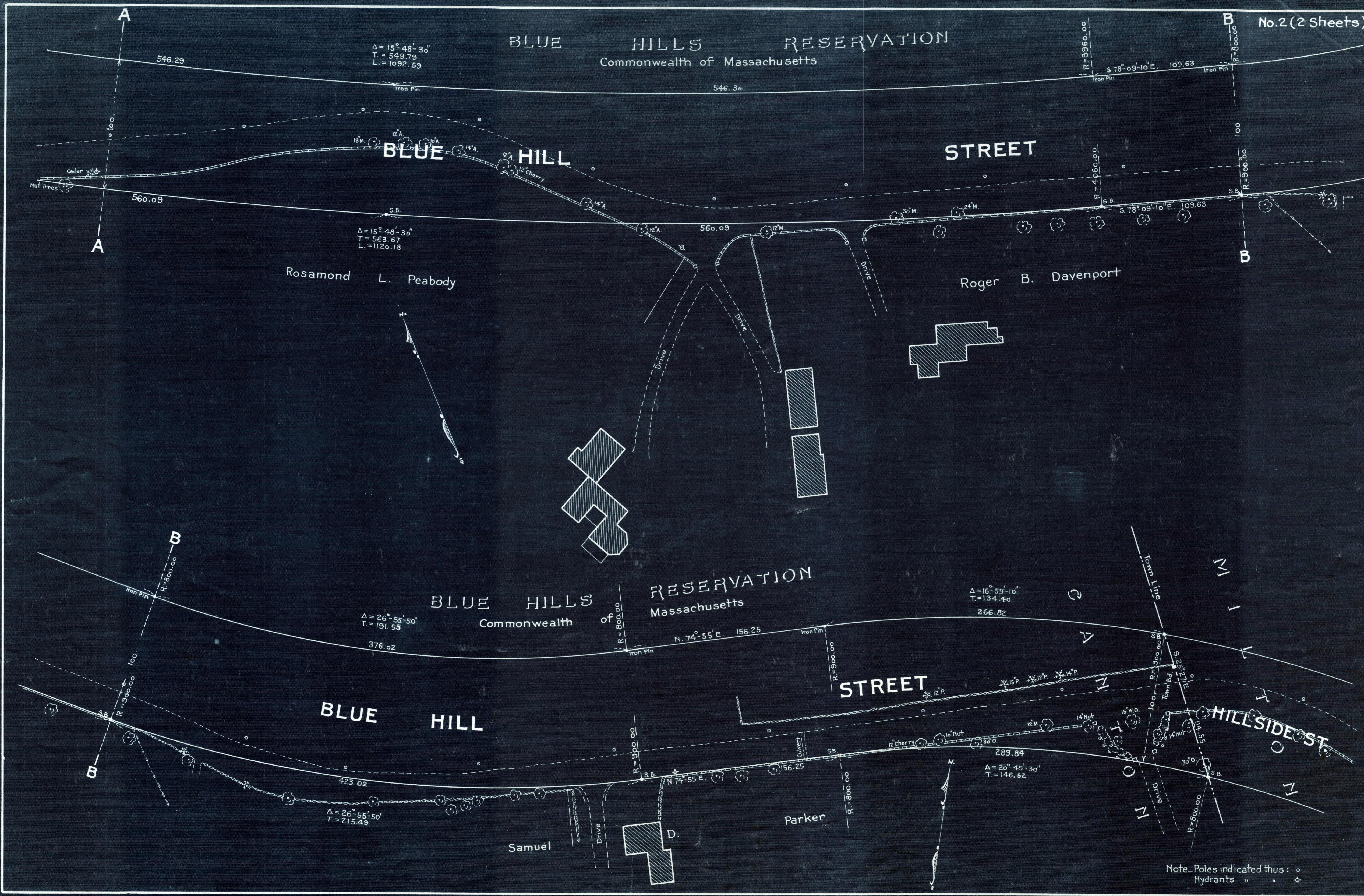


# BLUE HILLS RESERVATION

Commonwealth of Massachusetts



$\Delta = 15^\circ 48' - 30''$   
T. = 549.79  
L. = 1092.59

$\Delta = 15^\circ 48' - 30''$   
T. = 563.67  
L. = 1120.18

$R = 3960.00$   
S. 78°-09'-10\" E. 109.63  
Iron Pin  
Iron Pin  
 $R = 800.00$

$R = 4060.00$   
S. B.  
S. 78°-09'-10\" E. 109.63  
S. B.  
 $R = 7900.00$

$\Delta = 26^\circ 55' - 50''$   
T. = 191.53  
376.02

$\Delta = 16^\circ 59' - 10''$   
T. = 134.40  
266.82

$\Delta = 26^\circ 55' - 50''$   
T. = 215.49

$\Delta = 20^\circ 45' - 30''$   
T. = 146.52

Note: Poles indicated thus:  $\circ$   
Hydrants " "  $\diamond$