

Plan showing the Relocation and Widening
of
WEST STREET, WALPOLE
between the Norfolk Town Line and Cedar St.
as made by the Norfolk County Commissioners

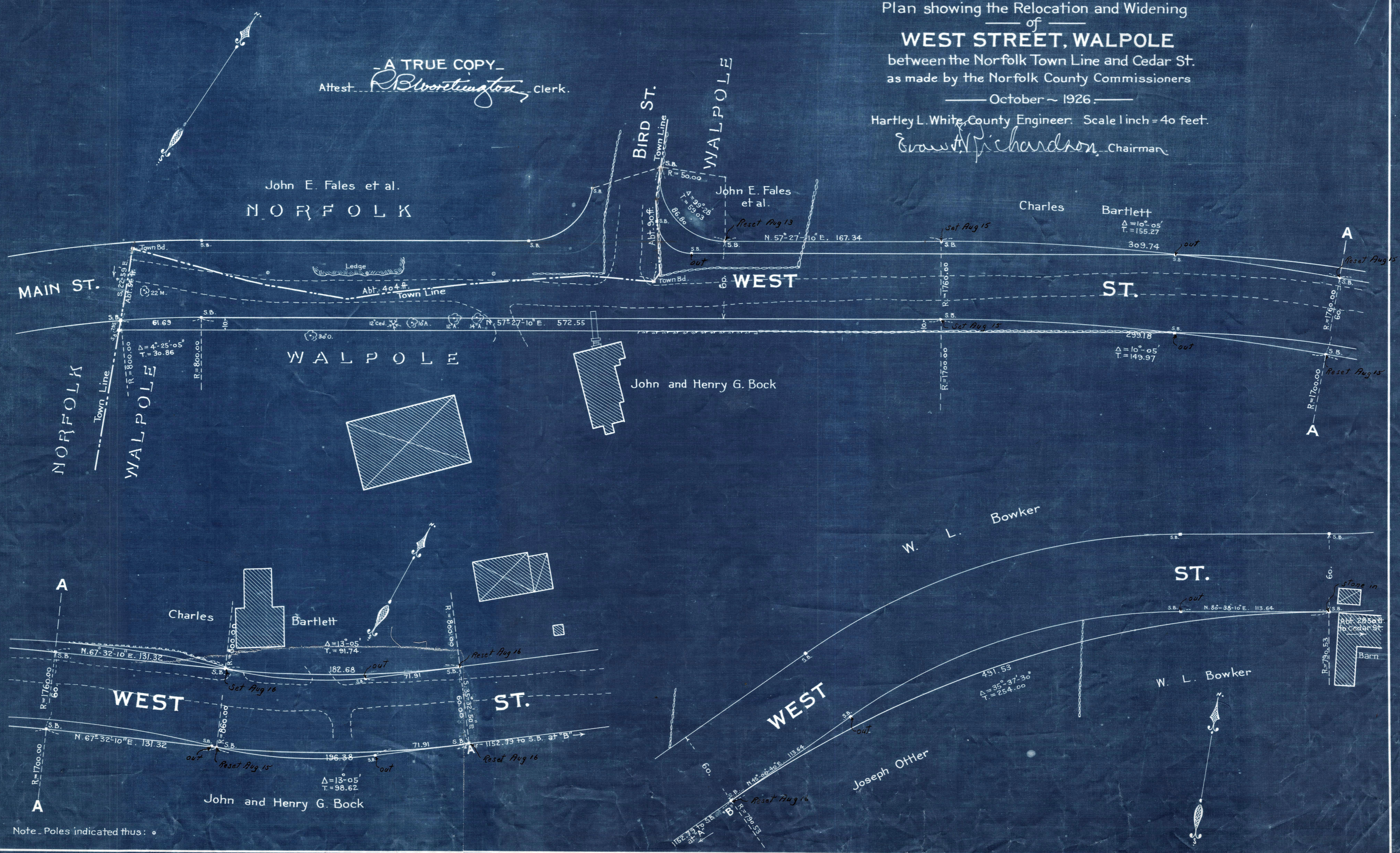
October ~ 1926.

Hartley L. White, County Engineer. Scale 1 inch = 40 feet.

Ernest Richardson, Chairman.

- A TRUE COPY -
Attest *R. B. Worthington*, Clerk.

John E. Fales et al.
NORFOLK



Note: Poles indicated thus: ○

Date of Entry Nov. 1, 1926