

Plan showing the Relocation and Widening  
of  
**GRANITE AVENUE, MILTON**  
from Squantum St. to Adams St.  
as made by the Norfolk County Commissioners

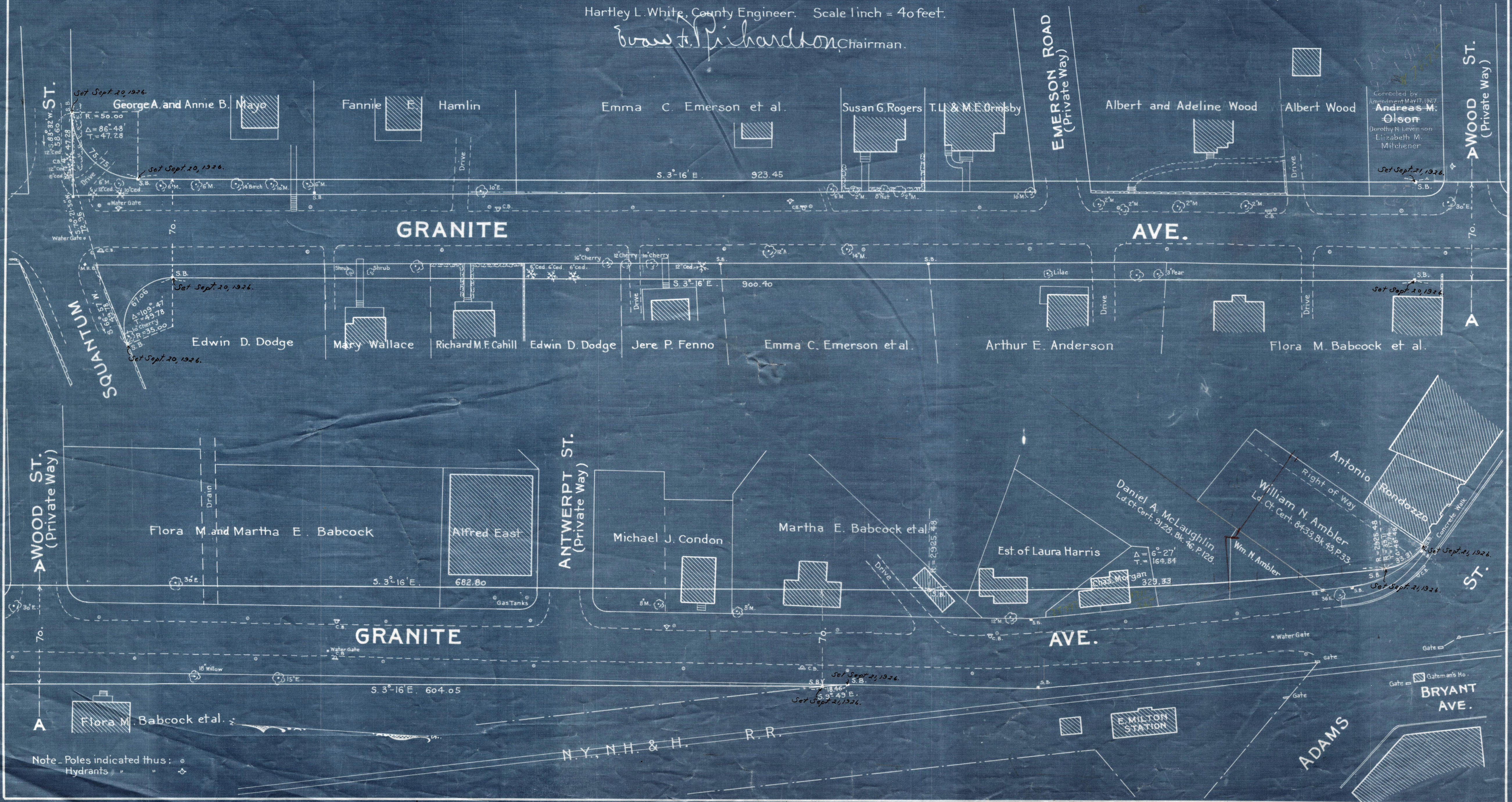
August, 1926.

Hartley L. White, County Engineer. Scale 1 inch = 40 feet.

*Walter P. Richardson* Chairman.

- A TRUE COPY -

Attest *Willard E. Everett*, Assistant Clerk.



Note - Poles indicated thus: ○  
Hydrants " " ⊕

DATE DEPOSED AUG 31, 1926

Date of Entry May 24, 1927