

Plan showing the Relocation and Widening of ELM STREET, WALPOLE

from the Medfield Town Line to the N.Y., N.H. & H. R. R.
as made by the Norfolk County Commissioners

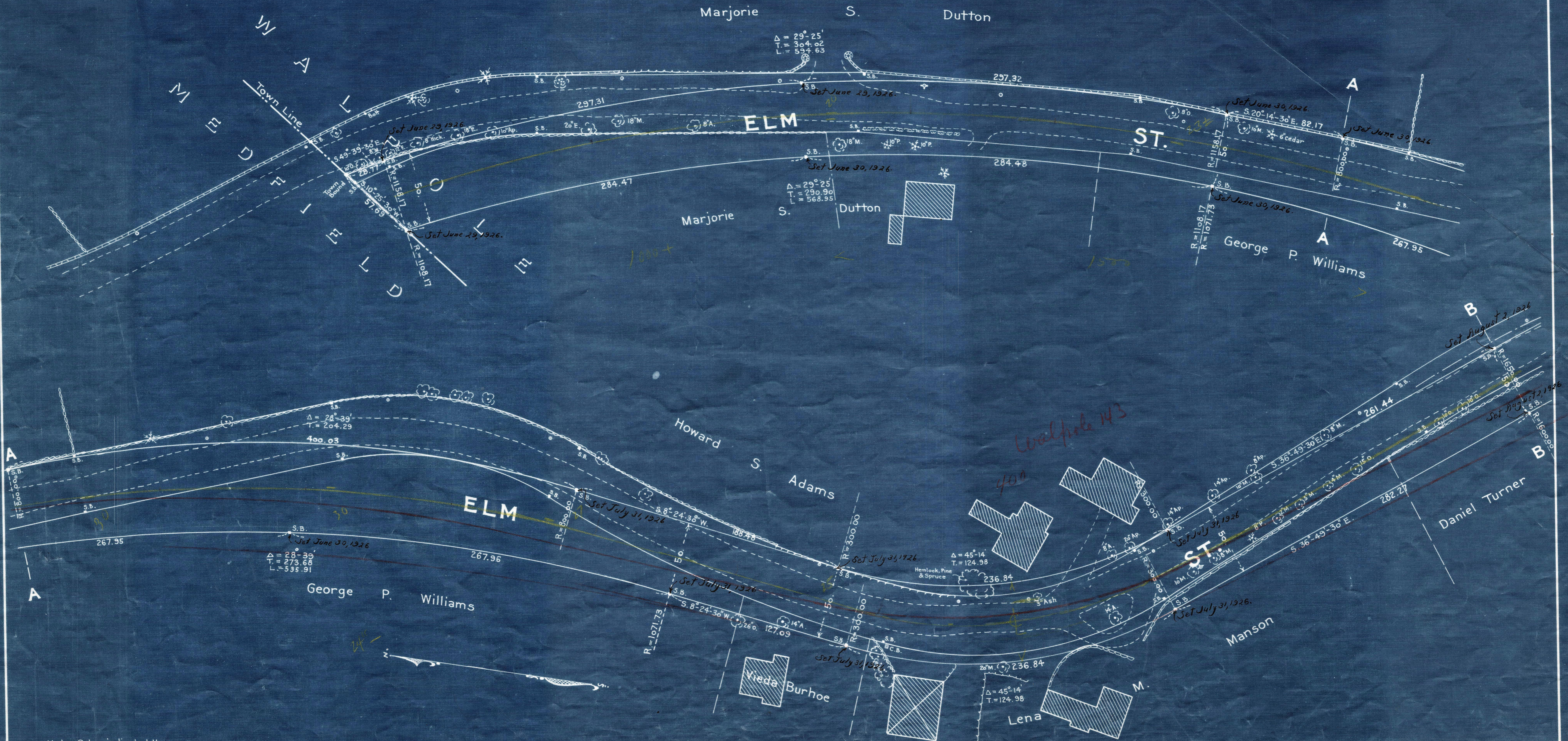
Ernest Richardson, Chairman.

April ~ 1926

Hartley L. White, County Engineer. Scale 1 inch = 40 feet.

A TRUE COPY

Attest *R.B. Worthington*, Clerk



Note: Poles indicated thus: ○
Hydrants: ◆