

Plan showing the Relocation and Widening
of
NORTH MAIN STREET
between Maskwonicut St. and Bay St.
in the
TOWN OF SHARON

as made by the Norfolk County Commissioners

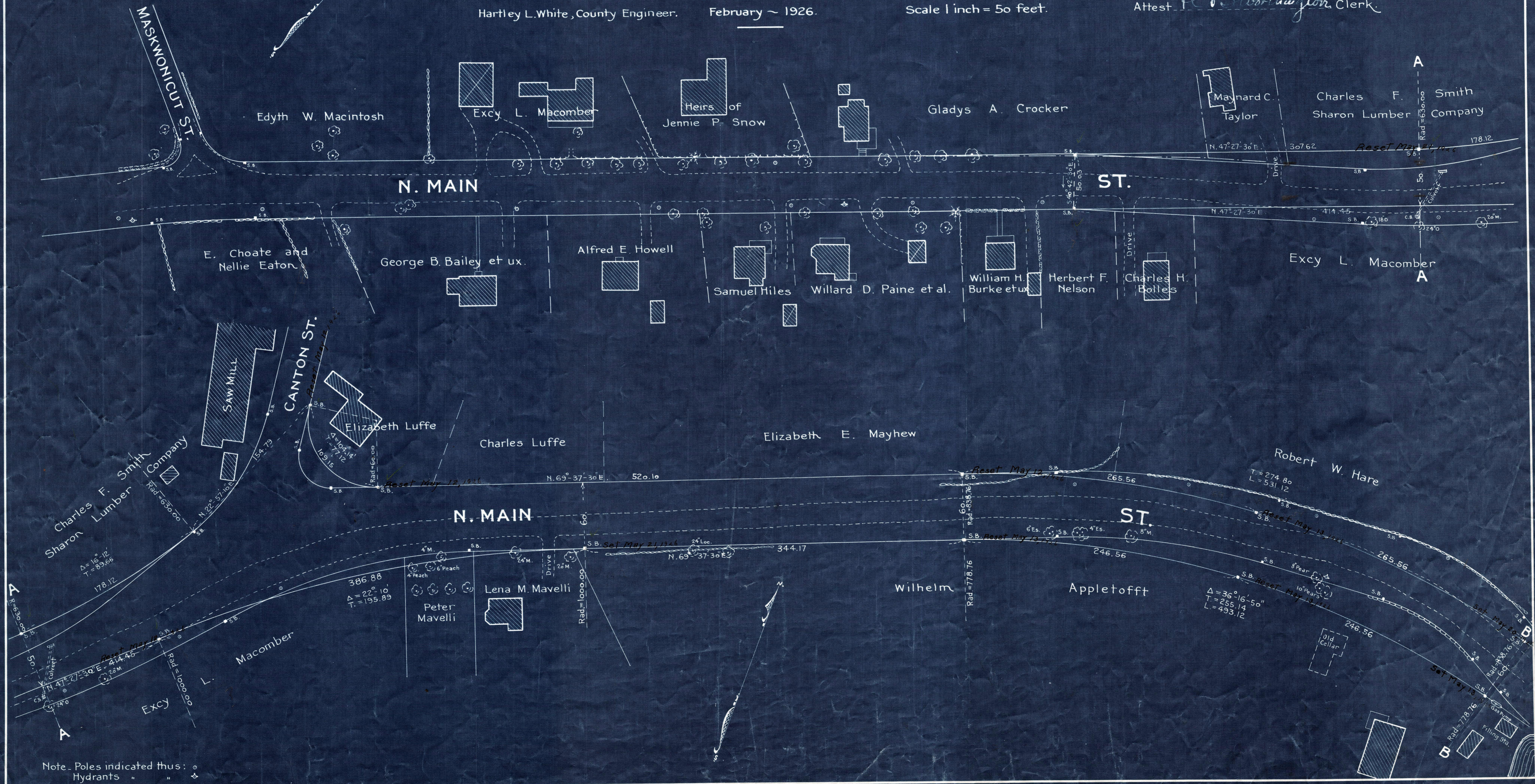
Ernest H. Richardson, Chairman

Hartley L. White, County Engineer.

February ~ 1926.

Scale 1 inch = 50 feet.

A TRUE COPY.
Attest *R. S. Worthington*, Clerk.



Note. Poles indicated thus: ○
Hydrants " " ⊕