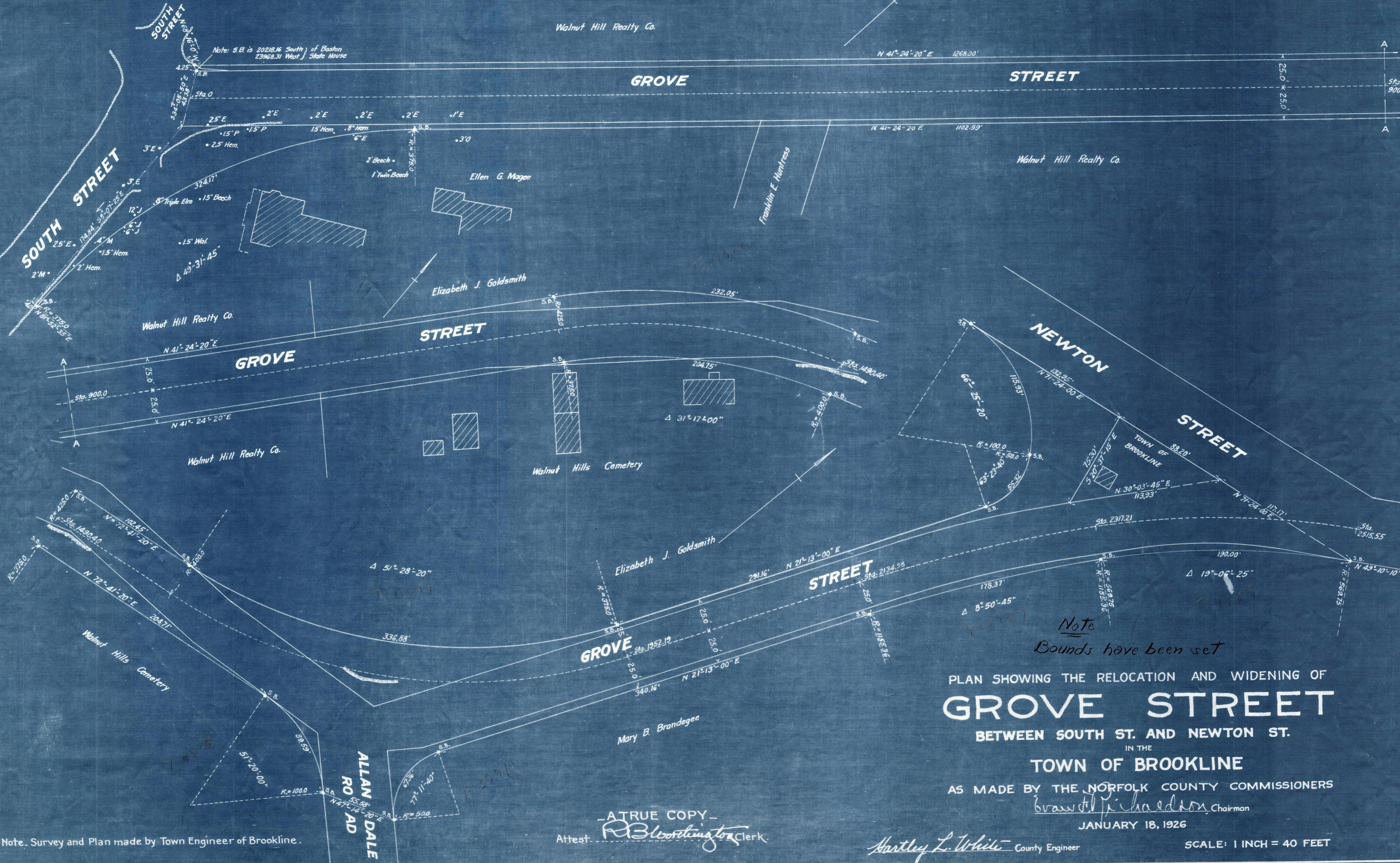
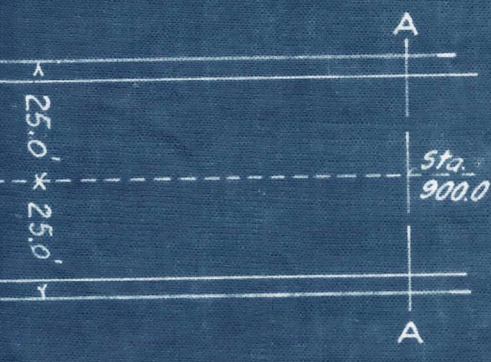


Walnut Hill Realty Co.

N 41°-24'-20" E 1268.00'

# GROVE STREET



Note  
Bounds have been set

PLAN SHOWING THE RELOCATION AND WIDENING OF  
**GROVE STREET**  
BETWEEN SOUTH ST. AND NEWTON ST.  
IN THE  
**TOWN OF BROOKLINE**  
AS MADE BY THE NORFOLK COUNTY COMMISSIONERS  
*Edward J. Richardson* Chairman  
JANUARY 18, 1926

Note. Survey and Plan made by Town Engineer of Brookline.

ATRUE COPY  
Attest *R. B. Worthington* Clerk.

*Hartley L. White* County Engineer

SCALE: 1 INCH = 40 FEET

Date of Decree Feb 23 1926

TAKING-1685-324  
Plan BK-106 #136  
REC-2-26-26