

Plan showing the Relocation and Widening  
of a portion of

# COUNTY ST., DOVER

as made by the Norfolk County Commissioners.

*Ernest Richardson* Chairman.

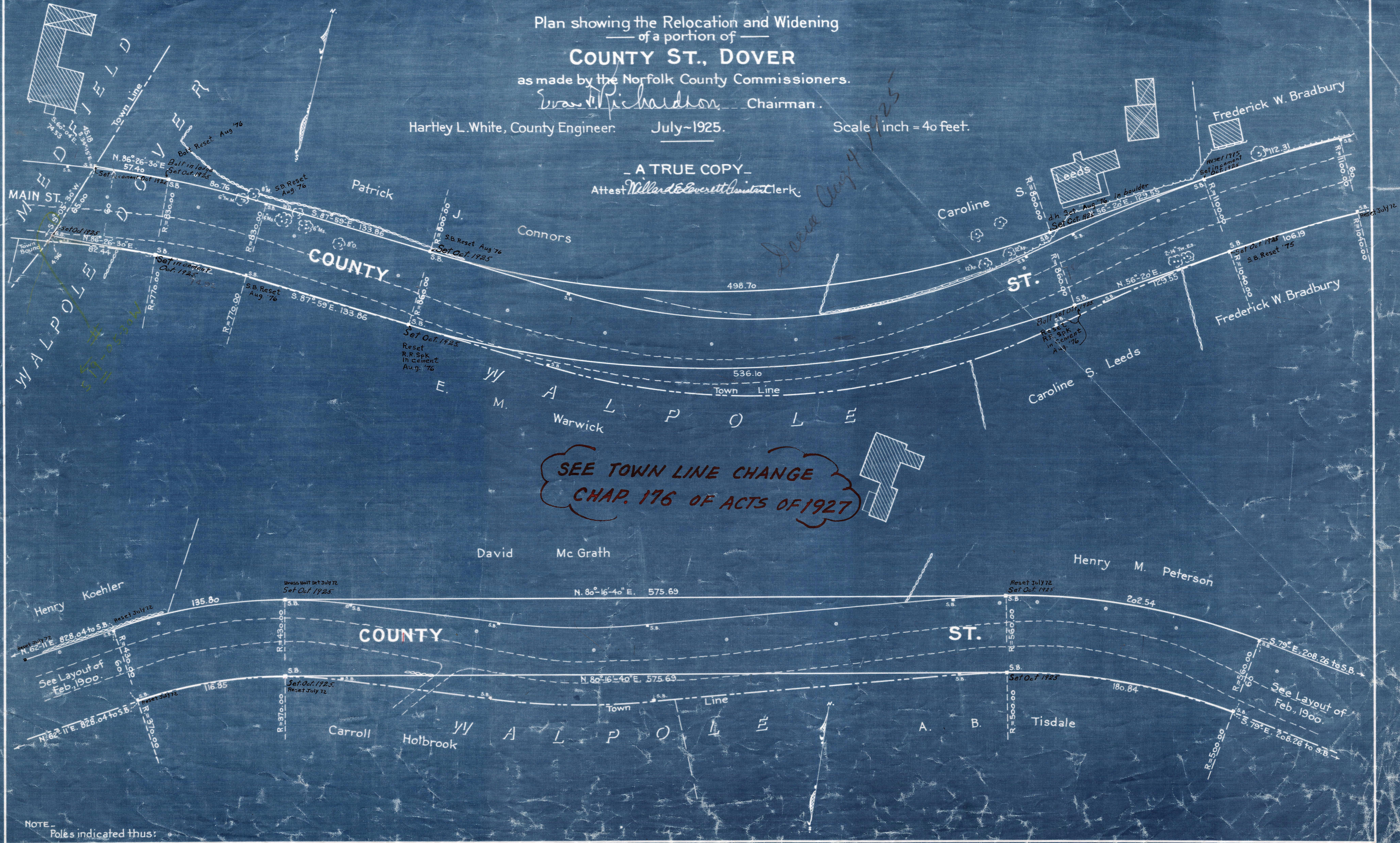
Hartley L. White, County Engineer: July~1925.

Scale 1 inch = 40 feet.

- A TRUE COPY -

Attest *Willard Everett* Assistant Clerk.

*Done Aug 4 1925*



SEE TOWN LINE CHANGE  
CHAP. 176 OF ACTS OF 1927

NOTE -  
Poles indicated thus: ●