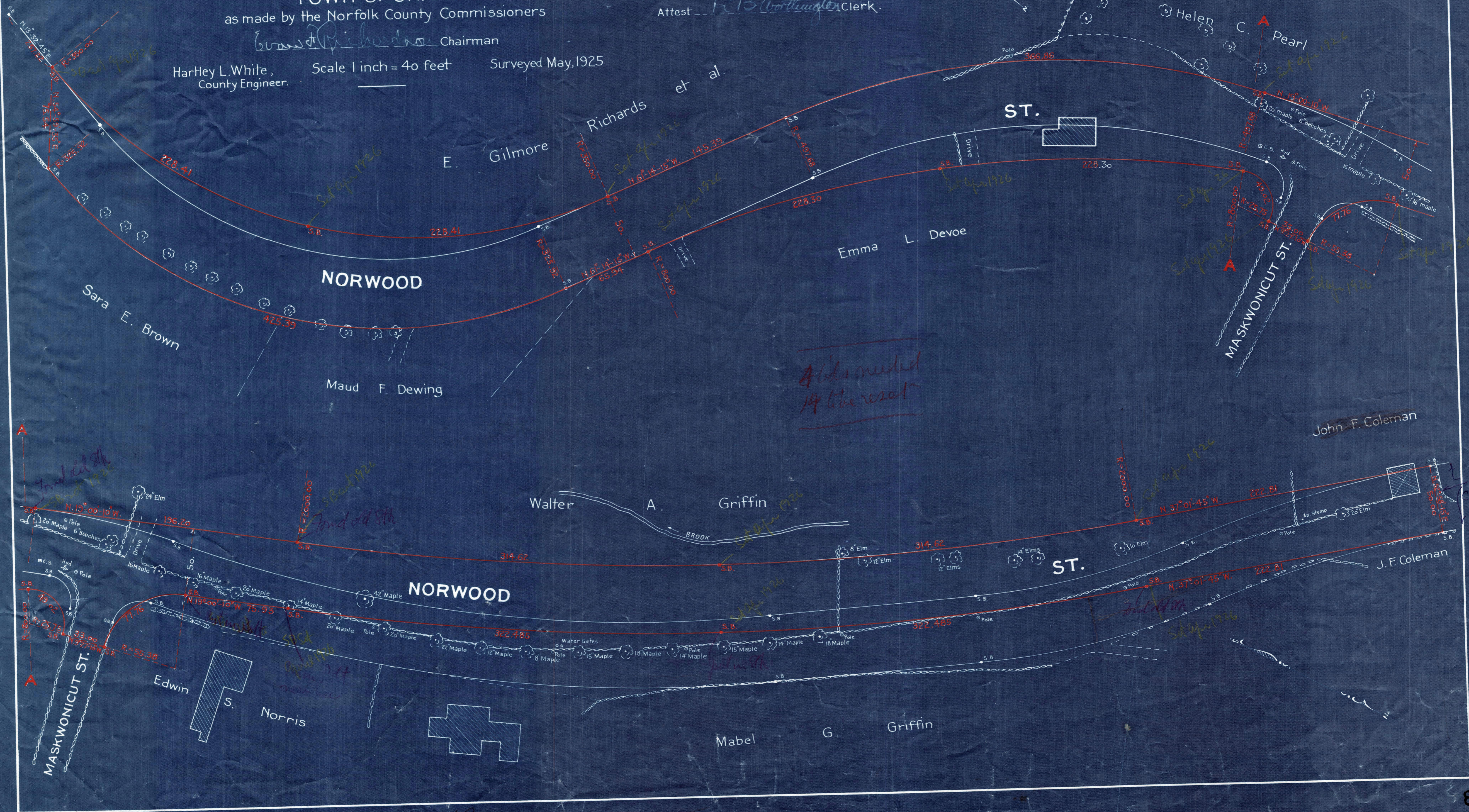


Plan showing the Relocation and Widening
of a portion of
NORWOOD STREET
in the
TOWN OF SHARON

as made by the Norfolk County Commissioners

Wm. H. Richardson Chairman
Hartley L. White, County Engineer. Scale 1 inch = 40 feet
Surveyed May, 1925

- A TRUE COPY -
Attest *R. B. Worthington* Clerk.



1923
County layout