

G. Willard Bartlett

DIVISION ST.

WEST ST.

ST.

Michael Deveney

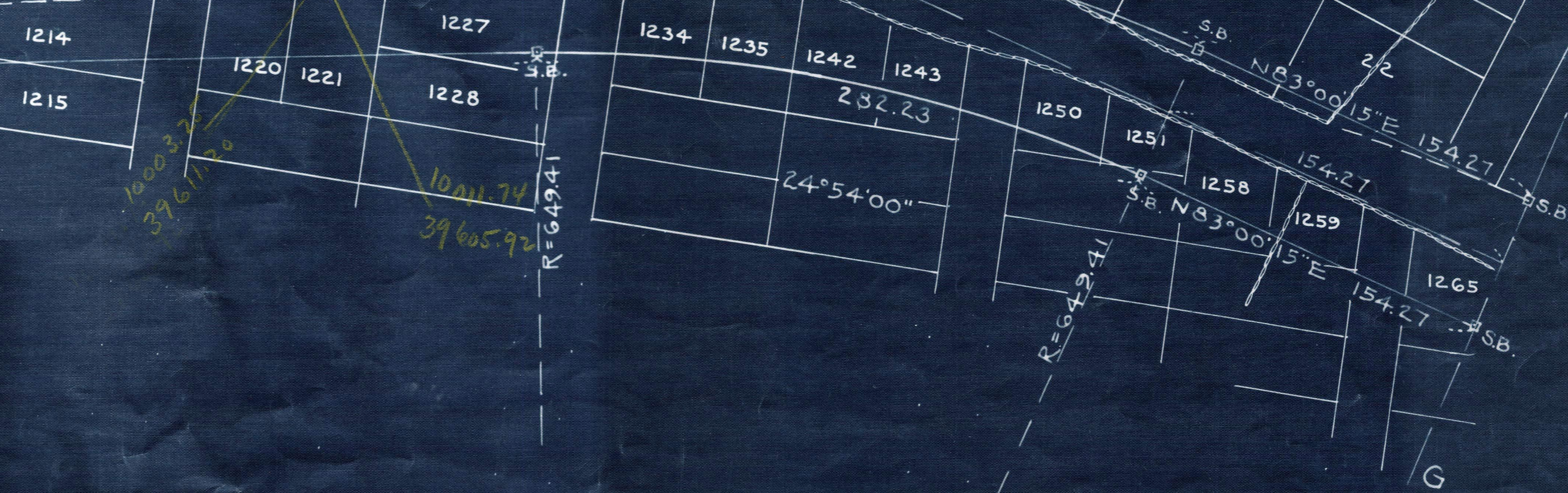
N58°06'15"E 495.00

N58°06'15"E 495.00

G. Willard Bartlett

R=99.53  
L=59°23'30"  
T=56.76  
L=103.17

R=23.94  
L=120°36'30"  
T=41.97  
L=50.39



LINCOLN ST.

Menne Haan

N.Y.N.H.&H.R.R.  
MIDLAND DIVISION

Norfolk Registry of Deeds  
DORCHESTER, MASS.  
Received Jan. 5, 1925 with Taking  
County of Norfolk  
Filed as No. 9-1925  
Attest Walter W. Dehambert  
Register

WEST ST.

John Hanson



Menne Haan

ST.

Menne Haan

573°55'15"E 561.60

E. D. Brooks & Co.



98°20'32"  
3896.510

R=93.86  
L=18°2'33"  
T=49.77

R=23.540  
L=27°51'45"  
T=30.56

R=23.540  
L=27°51'45"  
T=30.56

R=23.540  
L=27°51'45"  
T=30.56

R=23.540  
L=27°51'45"  
T=30.56

R=23.540  
L=27°51'45"  
T=30.56

R=23.540  
L=27°51'45"  
T=30.56

R=23.540  
L=27°51'45"  
T=30.56