

PLAN SHOWING  
THE RELOCATION OF A PART OF WALNUT STREET  
BROOKLINE MASS.

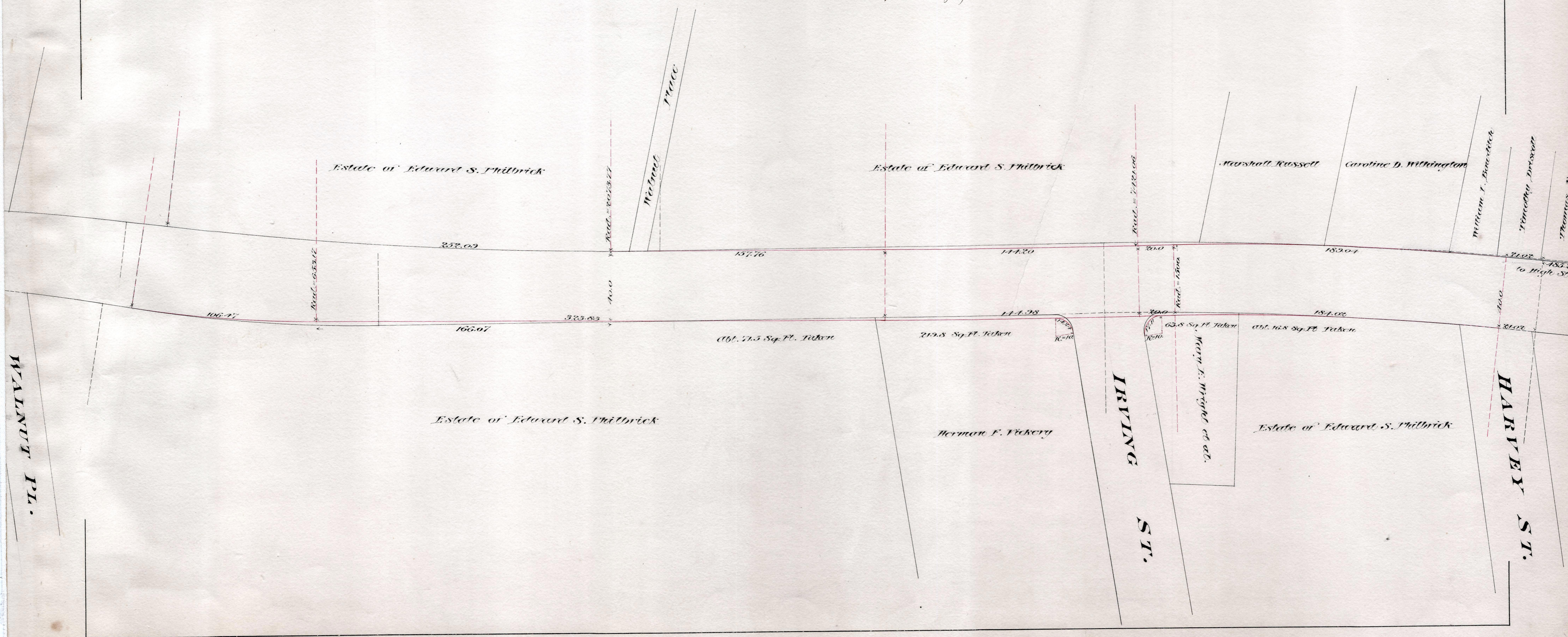
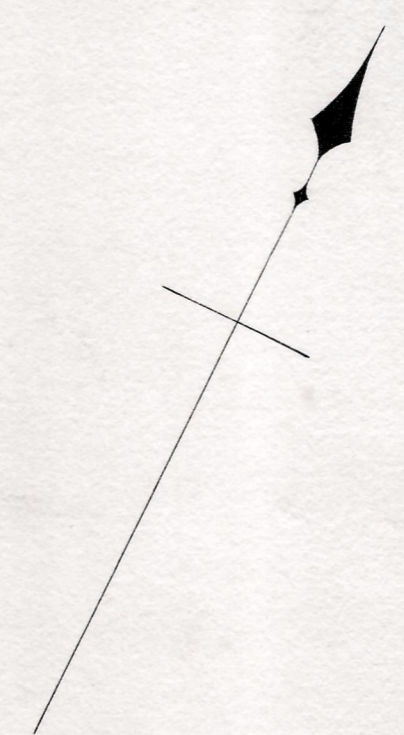
October 10, 1891.

Scale 30 feet to an inch

Alexis H. French C.E.

March 15, 1892.

George W. Higgins, Chairman.



WALNUT PL.

HARRY ST.

IRVING ST.