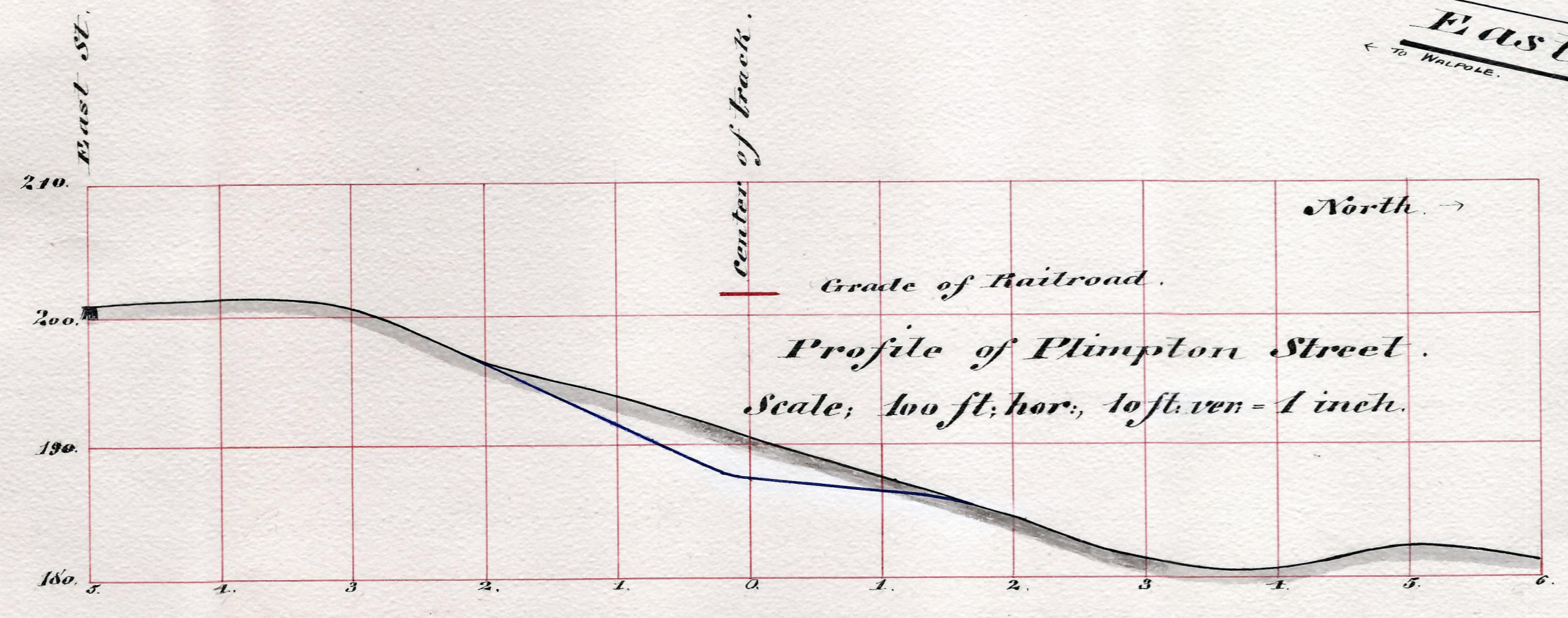
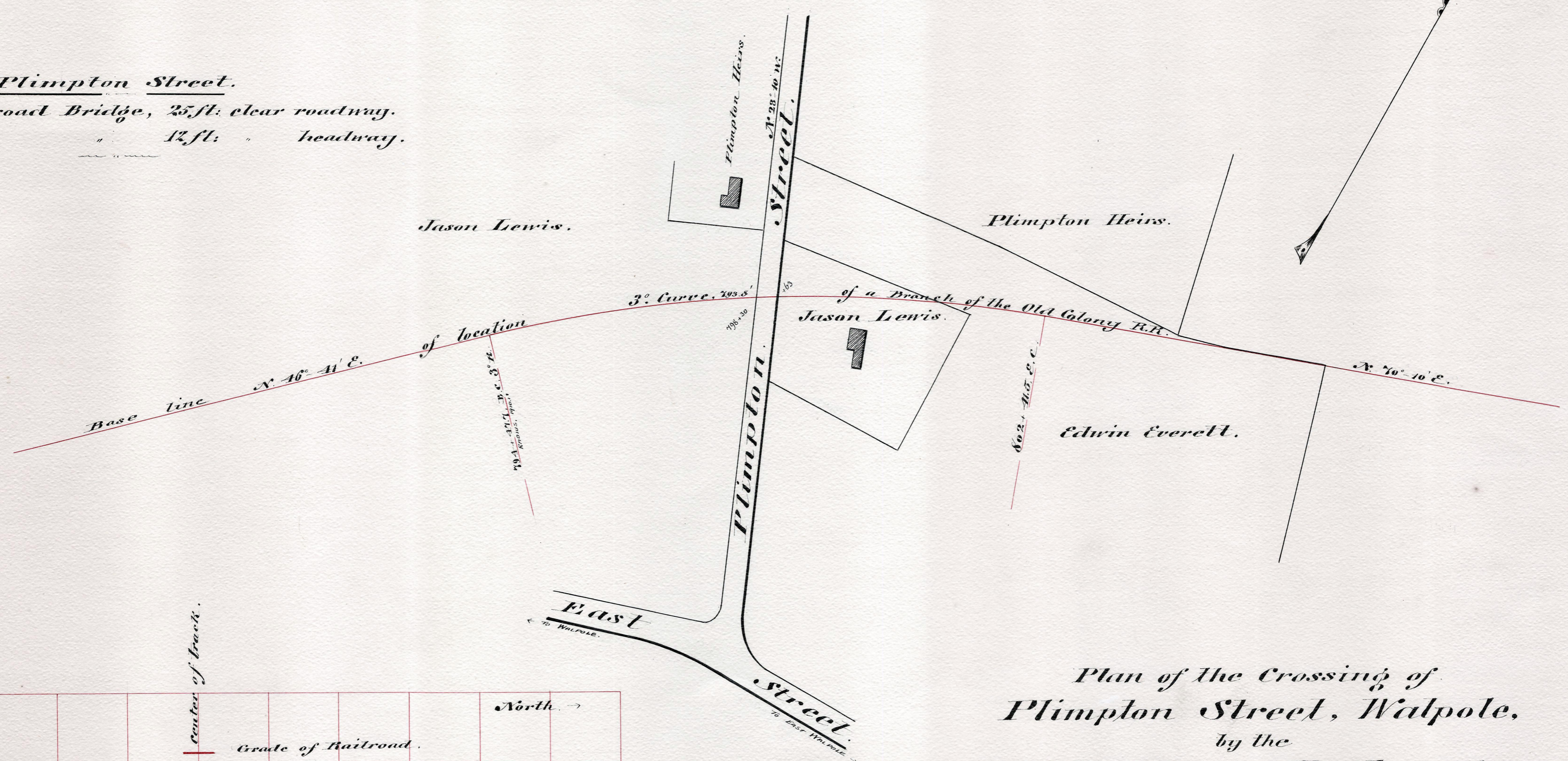


Plimpton Street.
 Railroad Bridge, 25 ft. clear roadway.
 " " " " 12 ft. " headway.



Plan of the Crossing of
Plimpton Street, Walpole,
 by the
Old Colony Railroad.
 Scale: 100 ft. = 1 inch.

Dedham, Nov. 25th 1890. *Geo. S. Morrill,*
 Chf. Engr.
 (B.) *George W. Higgin,* Chairman.