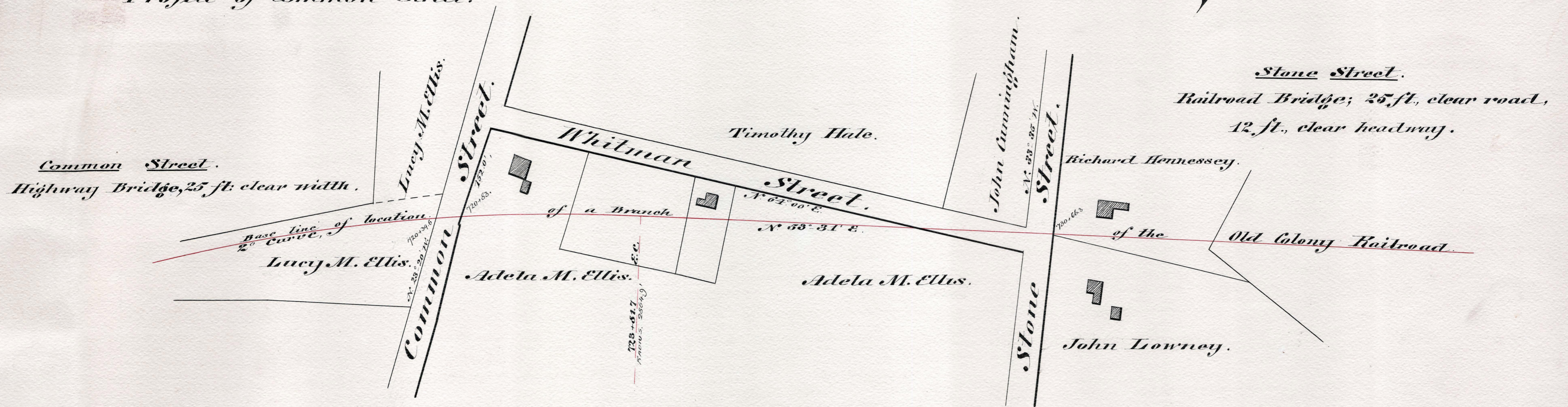
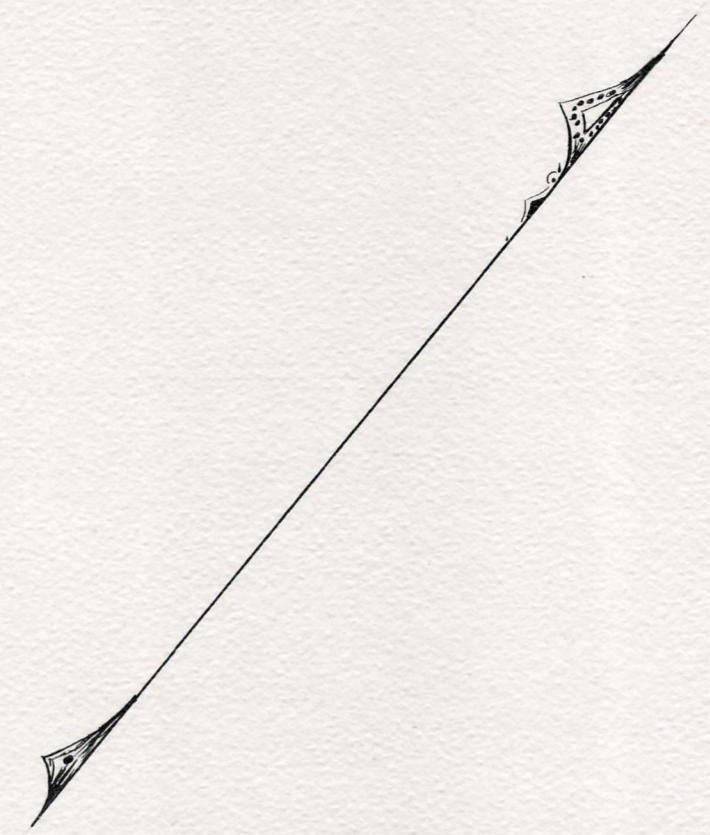


Scale of Profiles,
100 feet hor., & 10 feet ver. = One Inch.



Plan showing the crossings of
Common & Stone Streets, Walpole,
by the
Old Colony Railroad.

Scale, 100 ft. = 1 inch.

Dedham, Nov. 25th 1890. Geo. S. Morrill, *chf. engr.*

(A.) George W. Higgin, *chairman.*

