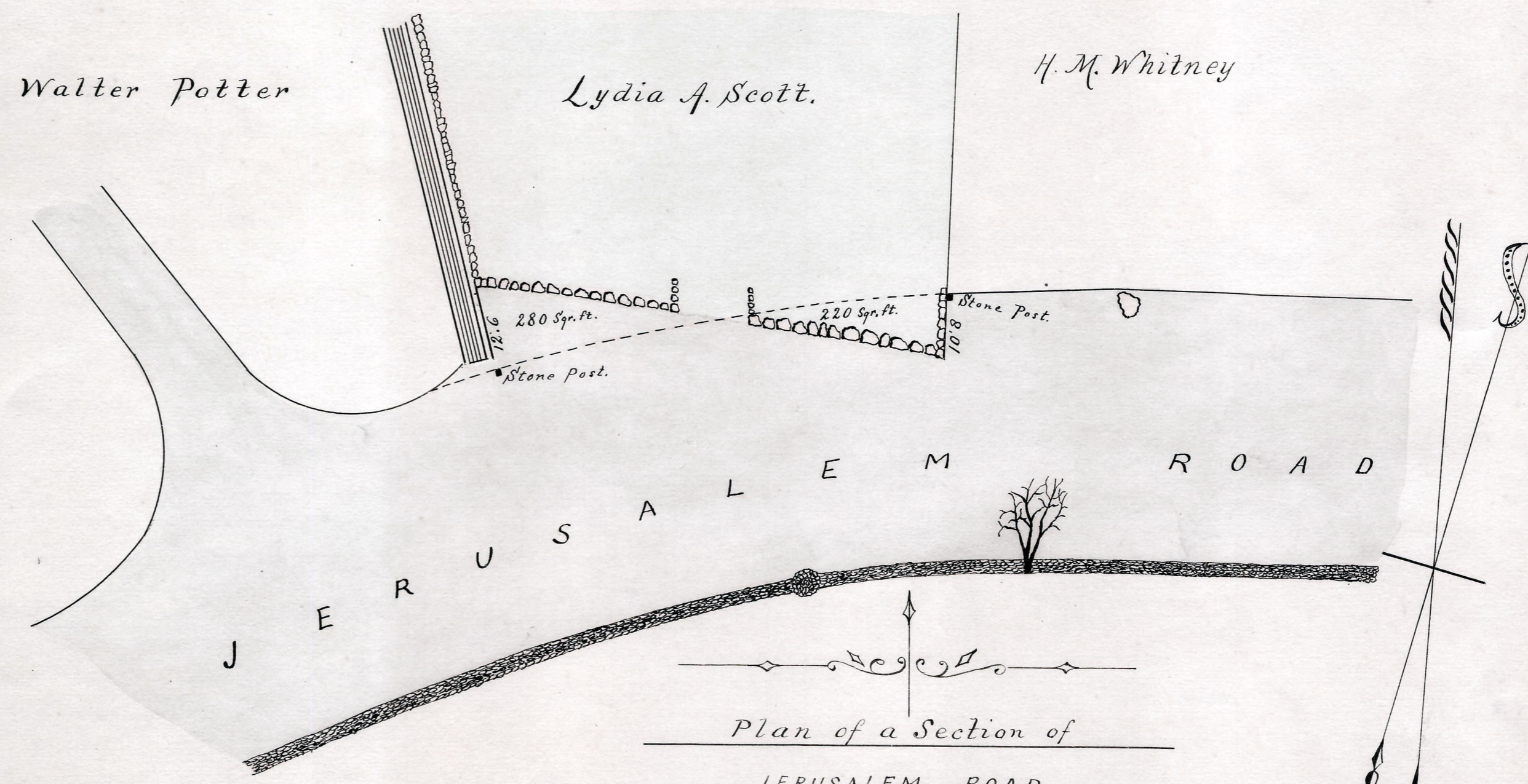


A plan of a change in the lines of Sherman and Beaumont Streets in Canton near Canton Junction.

Surveyed, November, 1890, by Frederic Endicott.

SCALE SIXTY FEET TO AN INCH.

George W. Higgin, Chairman.



Plan of a Section of
JERUSALEM ROAD

COHASSET

Scale 20 feet to an inch.

D. N. Tower, Surveyor

May 1890

George W. Higgin, Chairman.