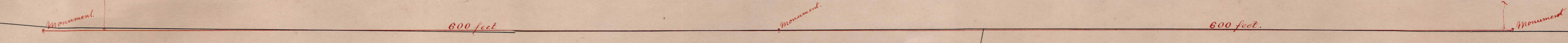
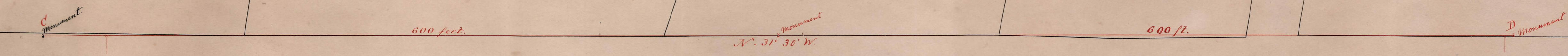
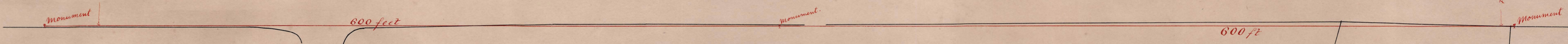
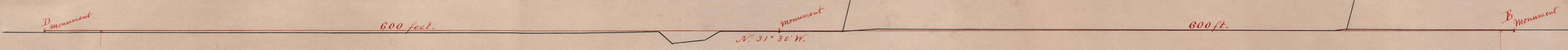


ELM ST.



*King Higgins
Coharman.*

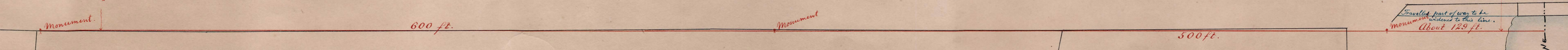
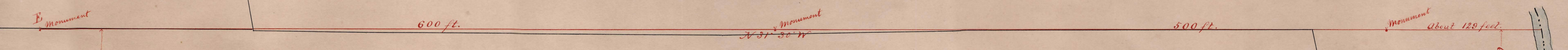


SHEET No. 2.

A plan of Quincy Avenue and a portion of Commercial Street
in Braintree as relocated by the County Commissioners.

Surveyed, July, 1890, by Frederic Endicott.

SCALE FIFTY FEET TO AN INCH.



Town Line
Quincy