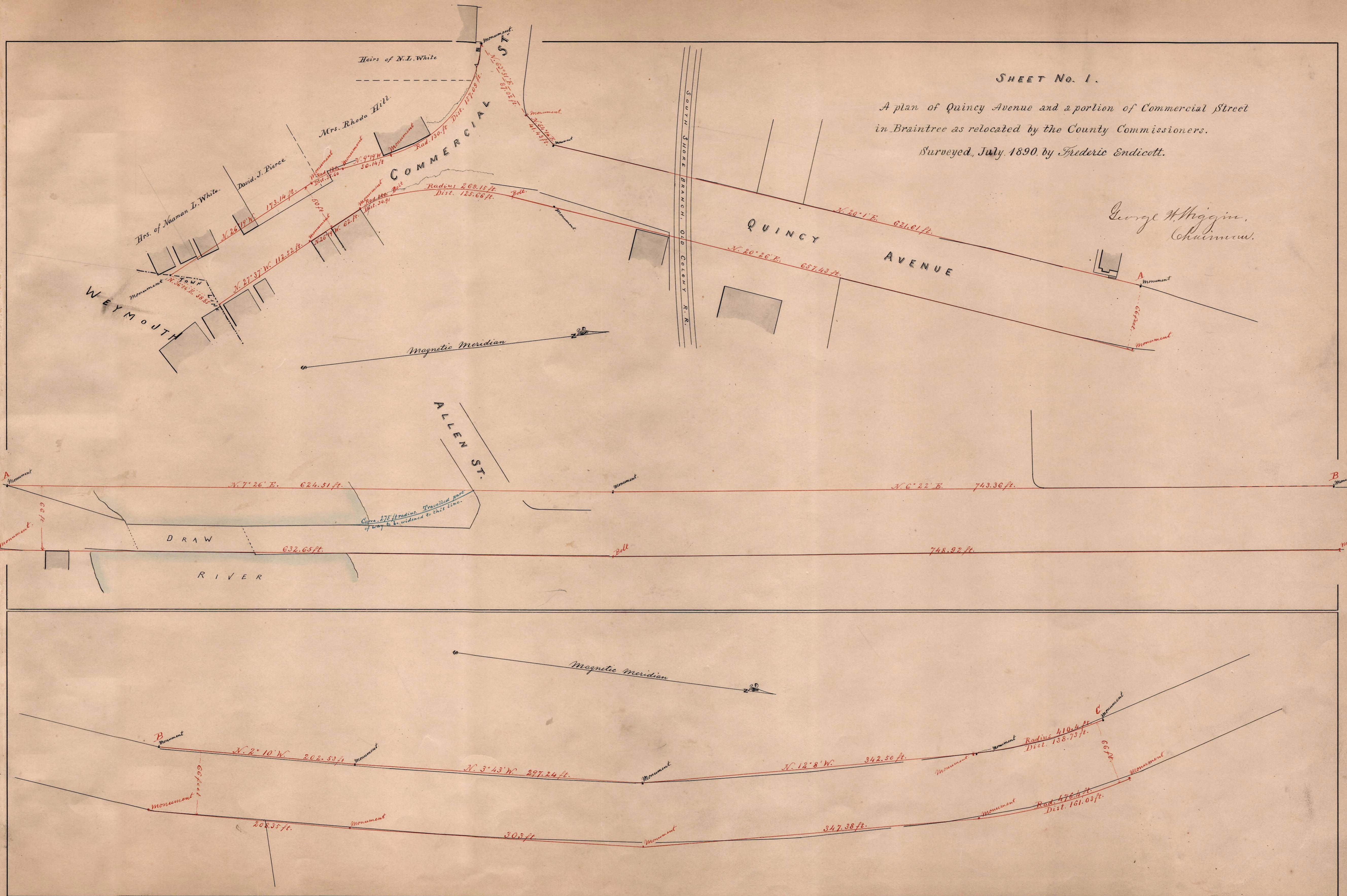


SHEET No. 1.

A plan of Quincy Avenue and a portion of Commercial Street in Braintree as relocated by the County Commissioners.

Surveyed, July, 1890, by Frederic Endicott.

George H. Higgin,  
Chairman.



Weymouth

COMMERCIAL ST.

QUINCY AVENUE

ALLEN ST.

DRAW RIVER

Magnetic Meridian

Magnetic Meridian

N. 2° 10' W. 202.53 ft.

N. 3° 43' W. 297.24 ft.

N. 12° 8' W. 342.50 ft.

Radius 410.4 ft.  
Dist. 158.73 ft.

Rad. 476.4 ft.  
Dist. 161.03 ft.

202.35 ft.

302 ft.

347.38 ft.

N. 7° 26' E. 624.31 ft.

N. 6° 22' E. 743.30 ft.

N. 26° 19' W. 173.14 ft.

N. 27° 37' W. 112.52 ft.

N. 26° 19' W. 62 ft.

Radius 269.13 ft.  
Dist. 125.66 ft.

N. 20° 1' E. 621.61 ft.

N. 20° 26' E. 657.43 ft.

Heirs of N.L. White

Mrs. Rhode Hill

David J. Pierce

Hrs. of Naaman L. White

Weymouth

Hrs. of Naaman L. White

David J. Pierce

Mrs. Rhode Hill

Heirs of N.L. White

Curve 275 ft radius traversed part of way to be widened to this line.

Bell

Monument

Monument

Monument

Monument

Monument

Monument

Monument

Monument

Monument

Monument

Monument

Monument

Monument

Monument

Monument

Monument

Monument

Monument

Monument

Monument

A Monument

Monument

Monument

Monument

Monument

Monument

B Monument

Monument

Monument

Monument

Monument

Monument

Monument

Monument

Monument

Monument