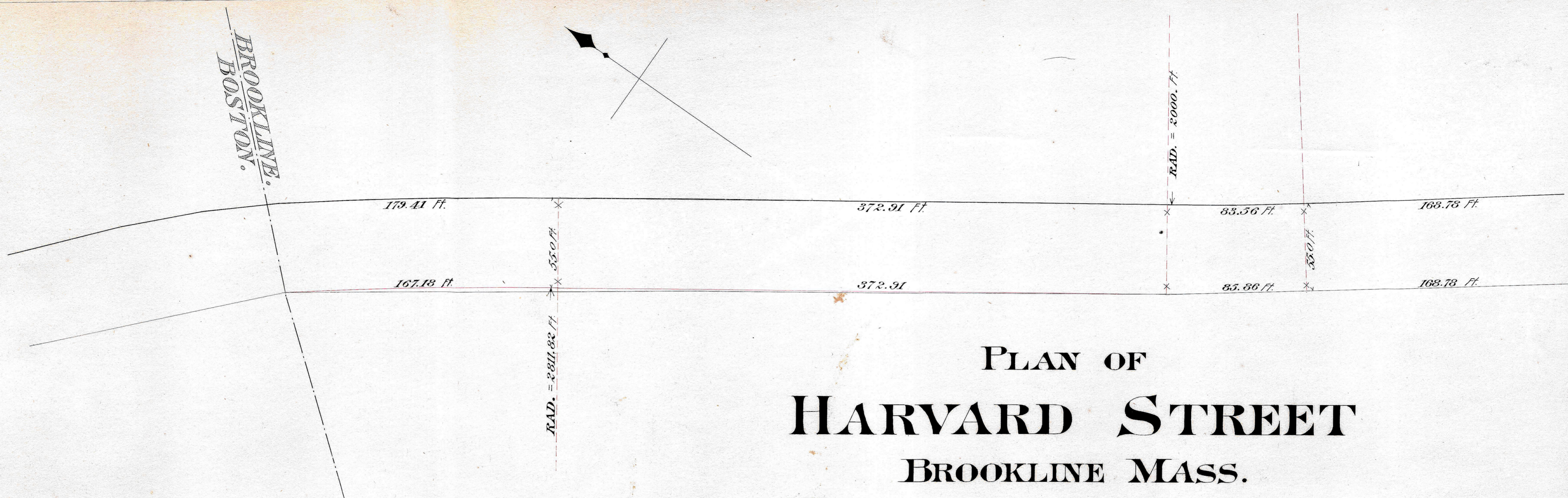
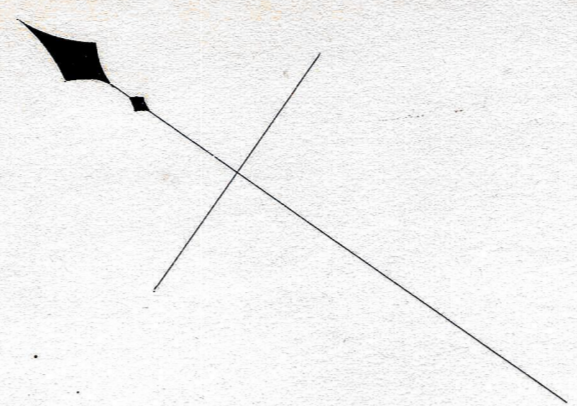


BROOKLINE.  
BOSTON.



# PLAN OF HARVARD STREET

BROOKLINE MASS.

SHOWN ON SHEETS No. 1, 2, 3 AND 4.

Scale: 1In. = 40 Ft. 1889.

*Alexis H. French C.E.*

*Geo. W. Higgins, Chairman*

*John Gibbs Trustee*

*340 S.F. Taken*

*500 S.F. Abandoned*

