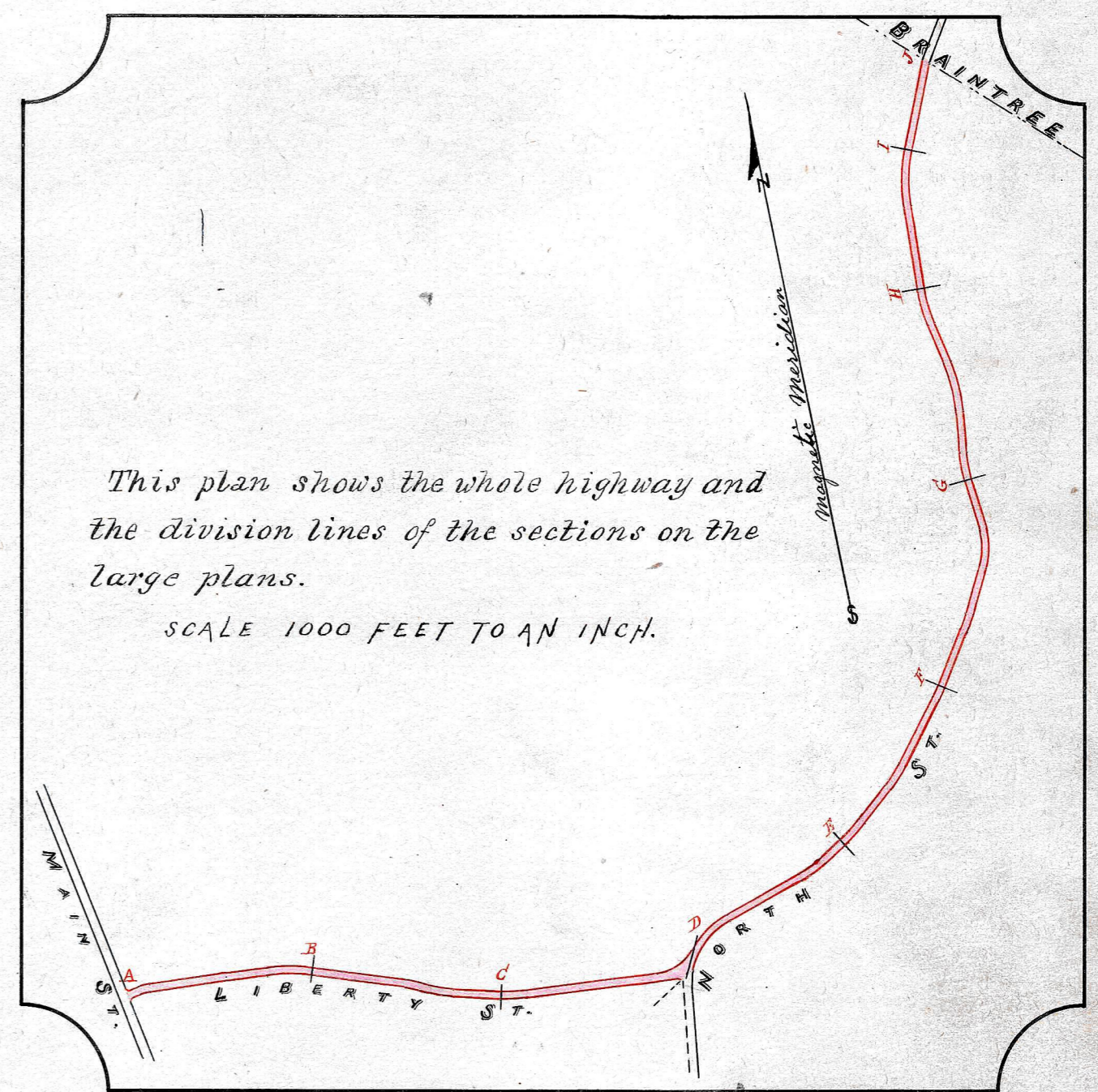


SHEET N^o 1.

This plan in nine sections contained in four sheets numbered 1, 2, 3 and 4, shows the whole of Liberty Street and part of North Street in Randolph as relocated by the County Commissioners. Surveyed, October, 1889 by Frederic Endicott.

SCALE FIFTY FEET TO AN INCH. George H. Higgin, Chairman.



This plan shows the whole highway and the division lines of the sections on the large plans.
SCALE 1000 FEET TO AN INCH.