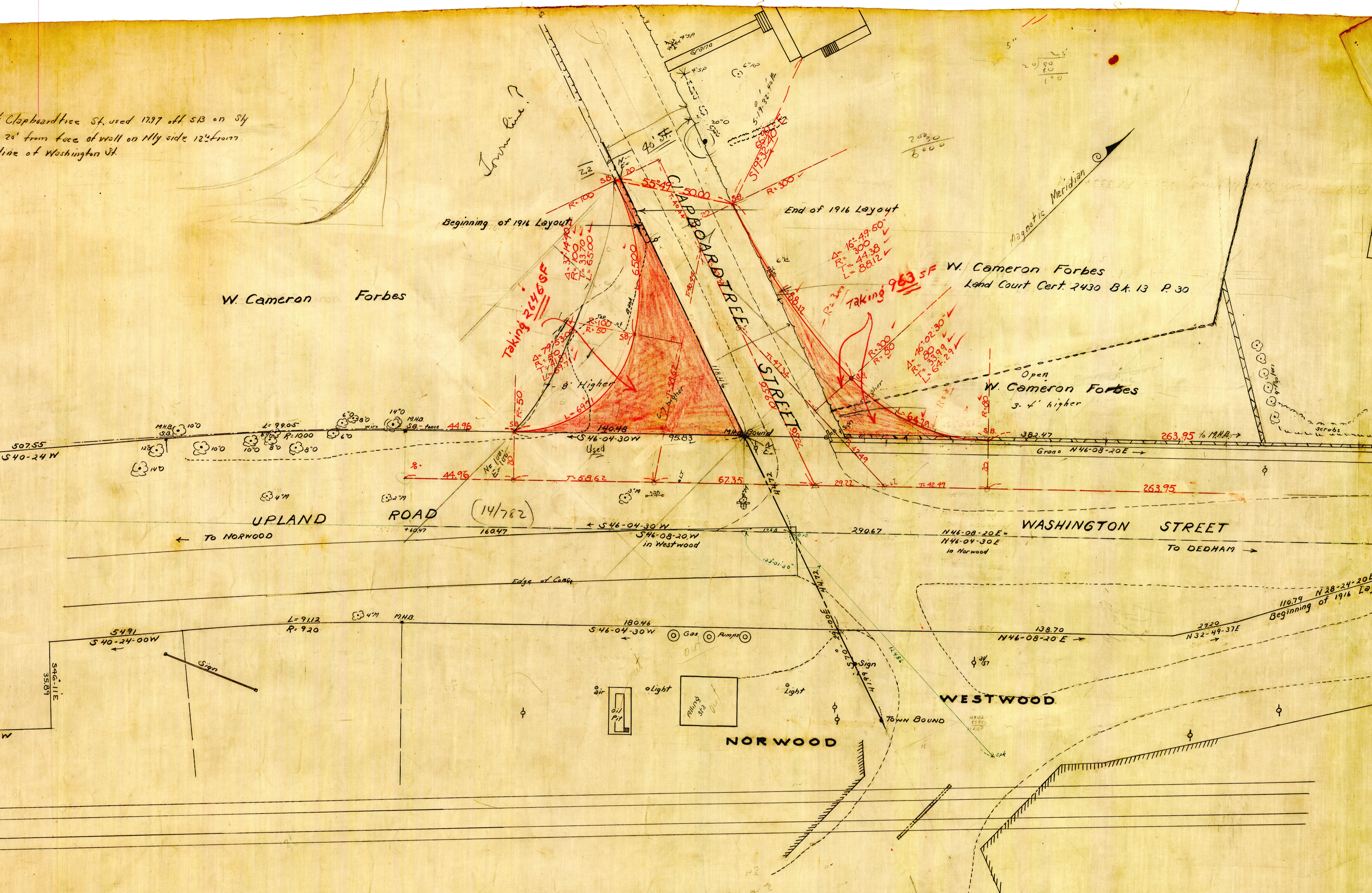


Clipboardtree St. used 1797 off SB on Sly
 20' from face of wall on Nly side 12' from
 line of Washington St.



Plotted from State Highway Vol. 6. P. 333 + 33
 Layout May 10, 1916

NORFOLK COUNTY — ENGINEERS DEPT.
 Town Norwood + Westwood Street Clipboardtree
 Survey by C.C.C. F. B. 51 Survey Page 116-
 Plotted by _____ Date _____ Scale 20'-1"
 Checked by _____ Drawer _____ No. _____

Calc Bk H 30/72

59 55 60
 43-57-30
 96 02 30