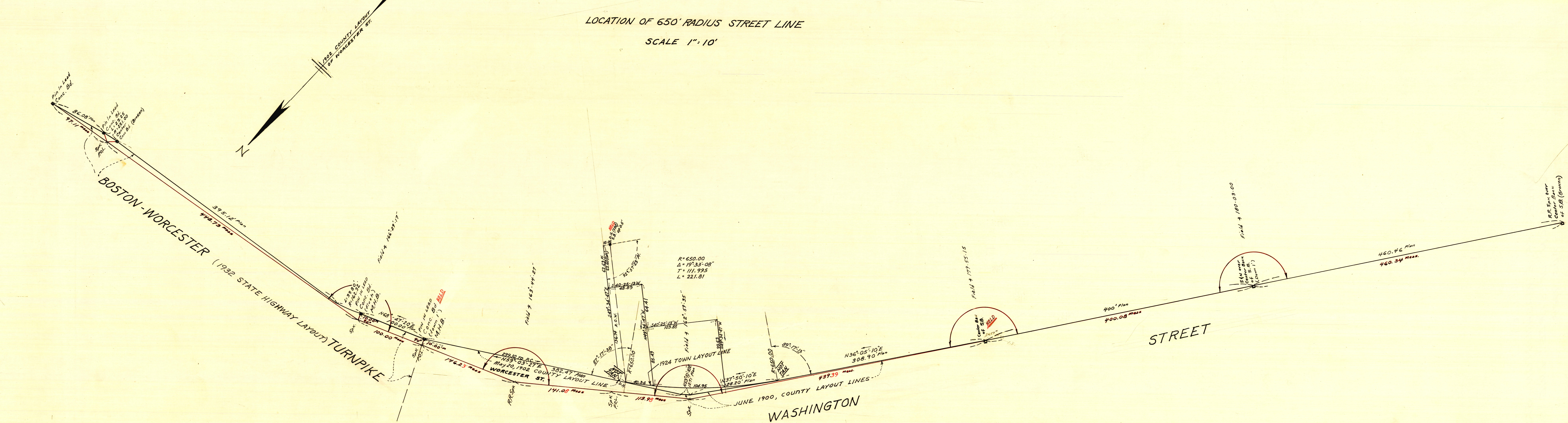


LOCATION OF 650' RADIUS STREET LINE
SCALE 1" = 10'



FIELD TRAVERSE
SCALE 1" = 40'

NORFOLK COUNTY — ENGINEERS DEPT.	
Town WELLESLEY	Street WASHINGTON STS
Date Aug. 1904	Scale As Shown
Field Book 350	House Book
Calc. Book In Folder	Envelope 759