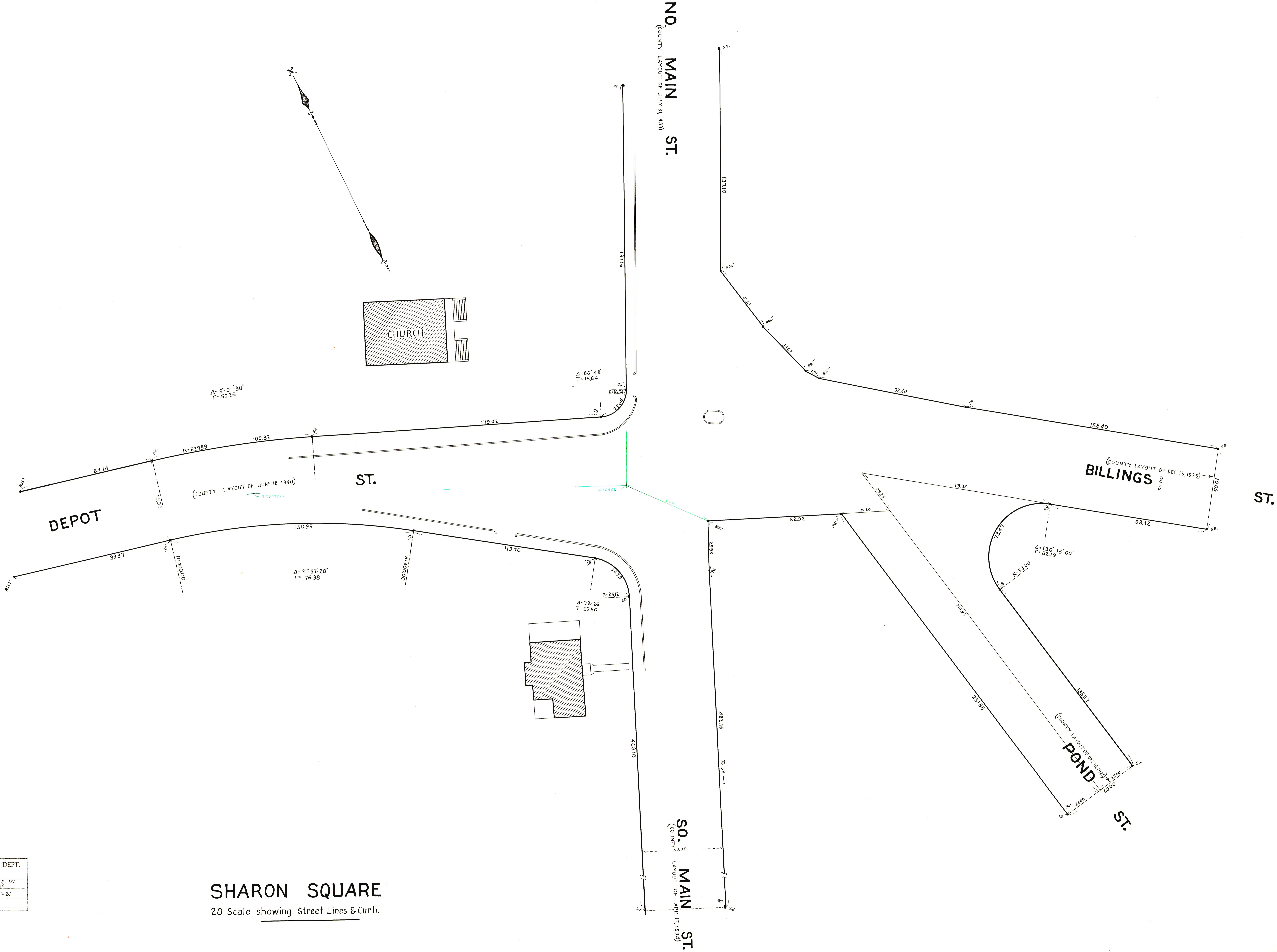


NORFOLK COUNTY — ENGINEERS DEPT.
 Town SHARON SQ Street _____
 Survey by _____ F. B. # 2 Page 30 of 131
 Plotted by _____ Date DEC 1950 Scale 1" = 20'
 Checked by _____ Drawer _____ No. _____

SHARON SQUARE
 20 Scale showing Street Lines & Curb.



NO. MAIN ST.
 (COUNTY LAYOUT OF JULY 31, 1883)

SO. MAIN ST.
 (COUNTY LAYOUT OF APR. 17, 1894)

DEPOT

ST.

BILLINGS

ST.

POND

ST.