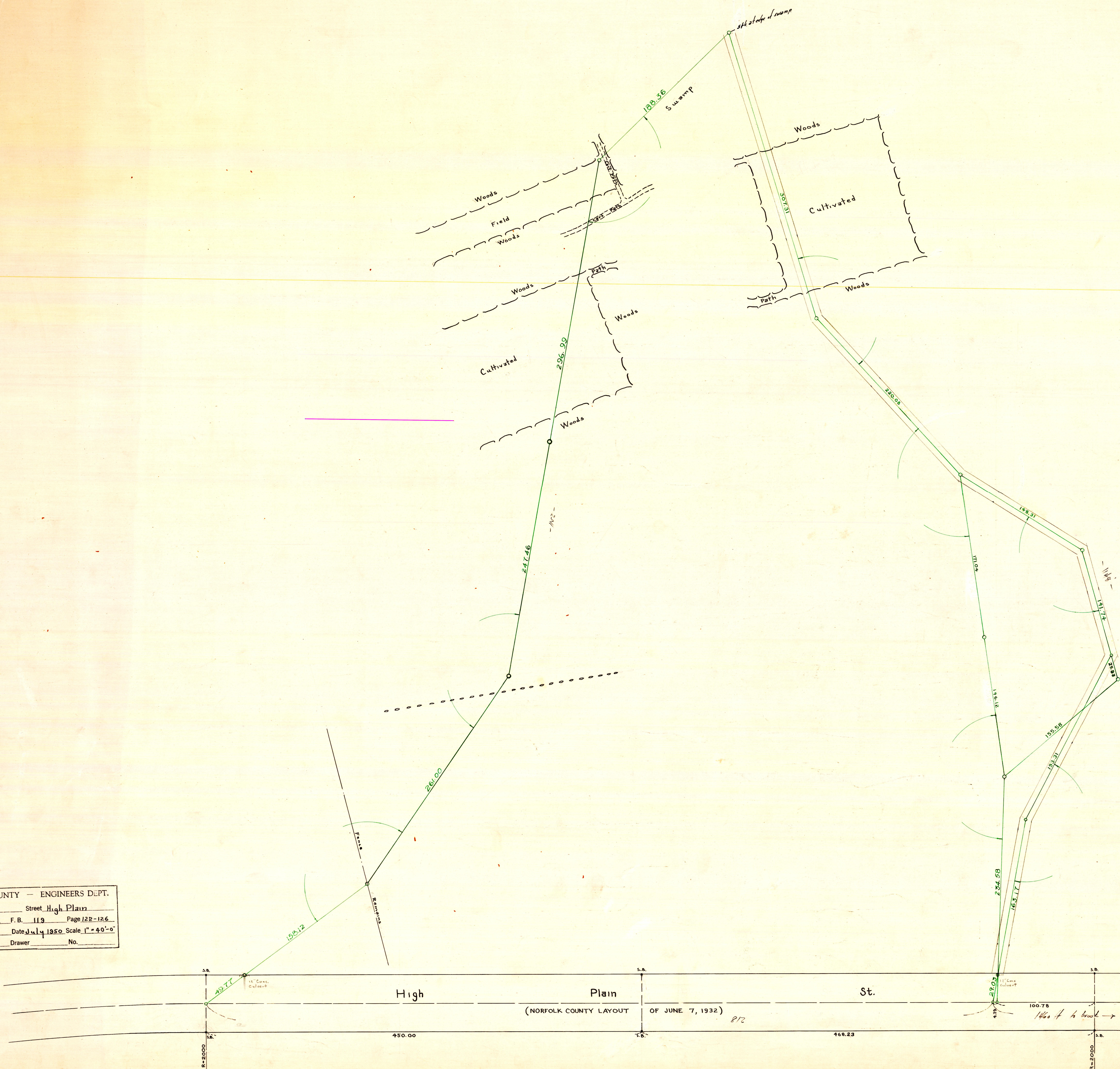


NORFOLK COUNTY — ENGINEERS DEPT.
 Town Sharon Street High Plain
 Survey by Pierce F.B. 119 Page 122-126
 Plotted by Date July 1950 Scale 1" = 40'-0"
 Checked by Drawer No.

NORFOLK COUNTY — ENGINEERS DEPT.
 Town Sharon Street High Plain
 Survey by Pierce F.B. 119 Page 122-126
 Plotted by Date July 1950 Scale 1" = 40'-0"
 Checked by Drawer No.

163.17 147.74
 192.31 20.87
 110.91 110.91
 142.01
 72.00
 20.51
 118.07

187.12
 207.46
 306.39
 189.32
 145.72



HIGH PLAIN
 PROPOSED
 STREETS
 SHARON
 ENVIRONMENT