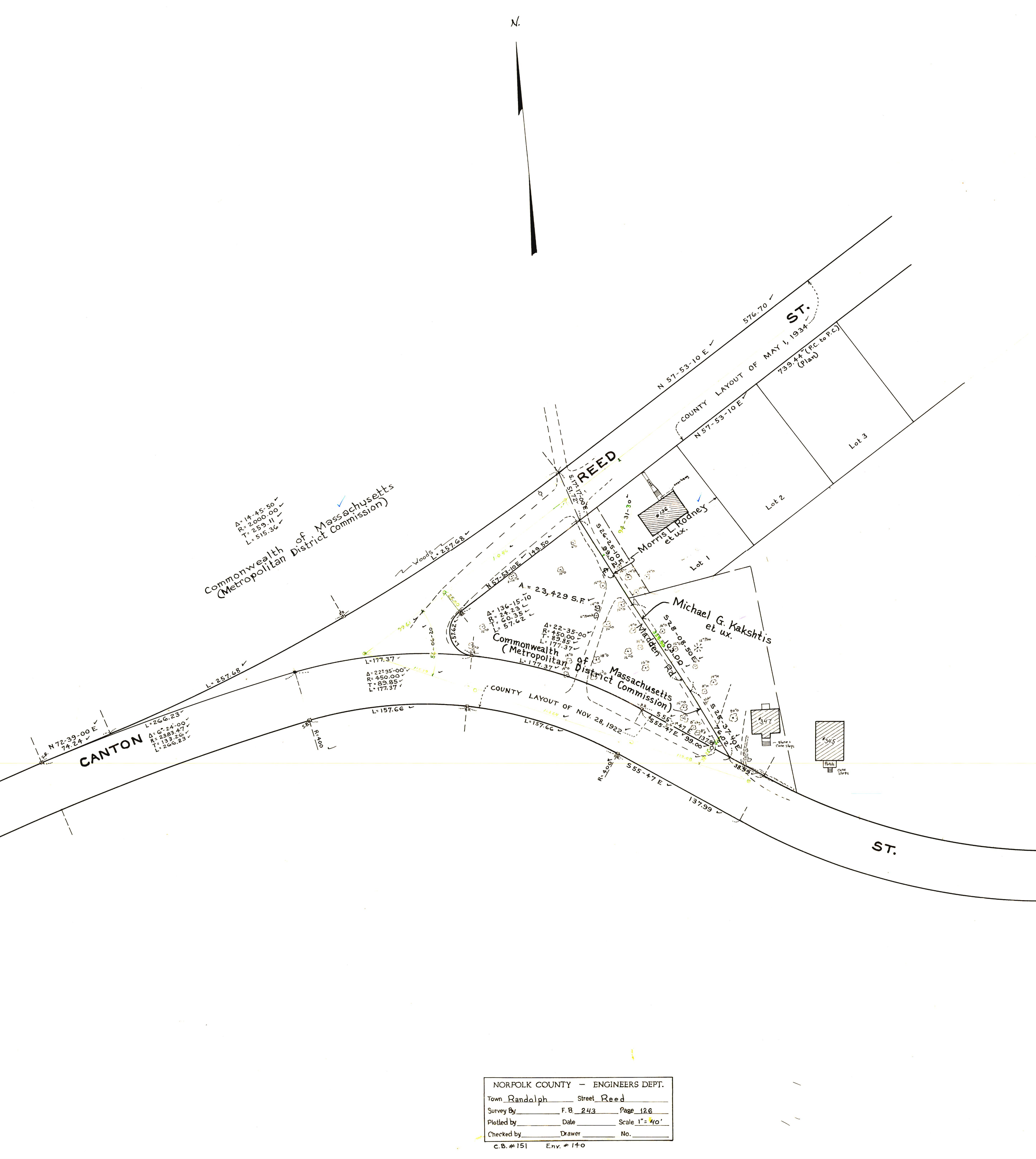


N.



Commonwealth of Massachusetts
(Metropolitan District Commission)

$A = 14-45-50$
 $R = 2000.00$
 $T = 259.11$
 $L = 515.36$

CANTON

$N 72-39-00 E$
 74.24

$L = 257.68$

$L = 266.23$
 $A = 6-24-00$
 $R = 2383.47$
 $T = 133.26$
 $L = 266.23$

$R = 400$

$L = 177.37$

$A = 22-35-00$
 $R = 450.00$
 $T = 89.85$
 $L = 177.37$

Commonwealth of Massachusetts
(Metropolitan District Commission)

$A = 23,429$ S.F.

$A = 136-15-10$
 $R = 24.23$
 $T = 60.35$
 $L = 57.62$

$A = 22-35-00$
 $R = 450.00$
 $T = 89.85$
 $L = 177.37$

County Layout of Nov. 28, 1922

$L = 157.66$

$L = 157.66$

Michael G. Kakshtis
et ux.

$S 28-08-50 E$
 52.8

$S 25-37-40 E$
 137.99

NORFOLK COUNTY - ENGINEERS DEPT.			
Town	Randolph	Street	Reed
Survey By	F. B. 243	Page	126
Plotted by		Date	
Checked by		Drawer	No.
c. B. # 151		Env. # 140	