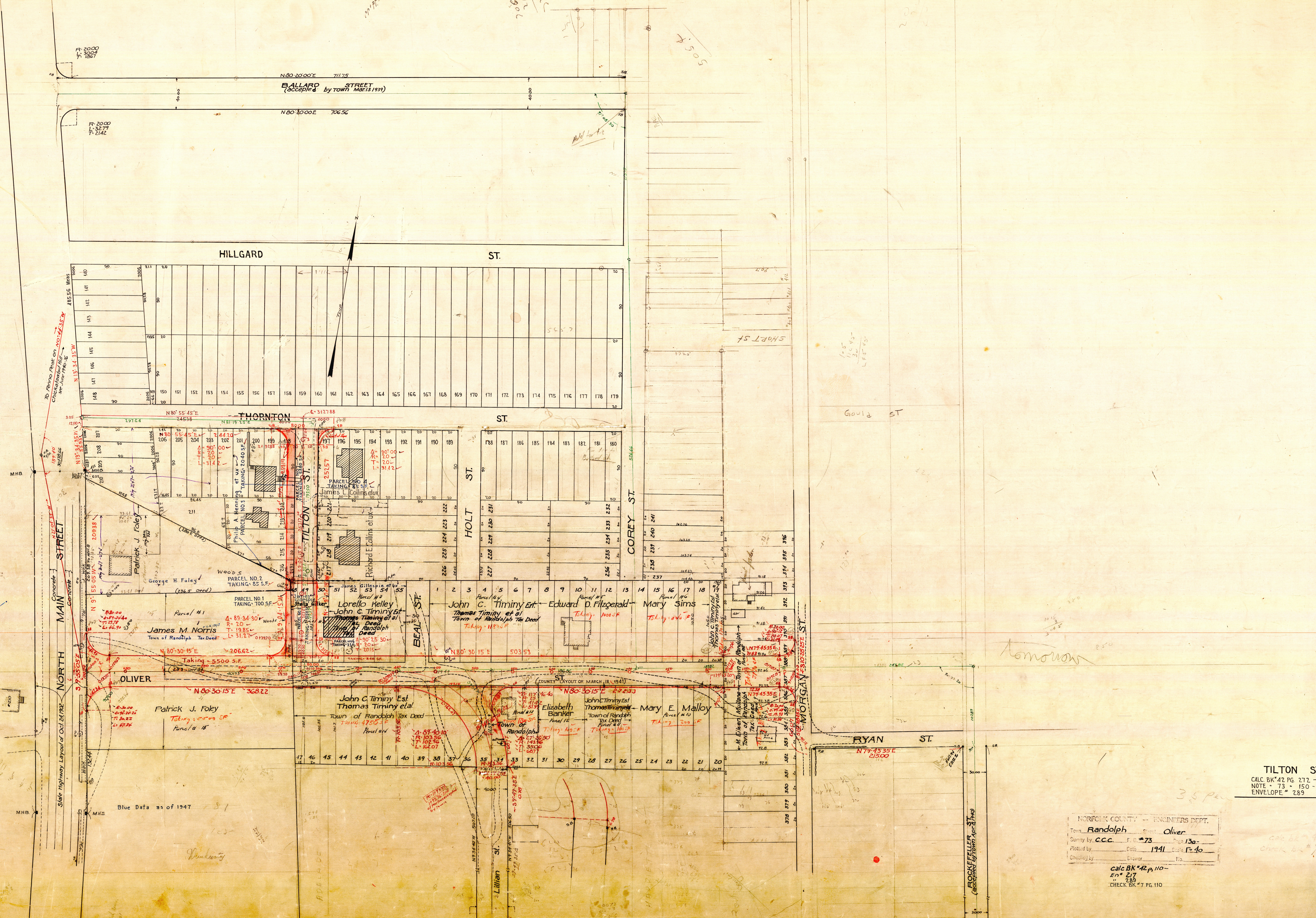


100' 2'  
 11795 4/17/77  
 35.5' 1/2  
 35.5' 1/2  
 505' F

R-2000  
 L-3279  
 T-2142

R-2000  
 L-3279  
 T-2142



Govia ST

Tomorrow

TILTON ST.  
 CALC BK #42 PG. 272 -  
 NOTE - 73 - 150 -  
 ENVELOPE # 289

NORFOLK COUNTY -- ENGINEERS DEPT.  
 Town Randolph Street Oliver  
 Survey by CCC F. B. # 73 Page 13a  
 Plotted by \_\_\_\_\_ Date 1941 Scale 1"=40'  
 Checked by \_\_\_\_\_ Drawn \_\_\_\_\_

Calc BK #42 p. 110 -  
 EN # 217  
 289  
 CHECK BK #7 PG. 110

35 p  
 calc bk #42 p. 110  
 check bk #7 p. 110