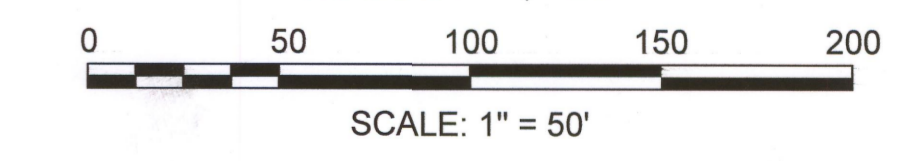




**WORKSHEET**  
**QUINCY HOUSING AUTHORITY**  
**QUINCY, MA**

AUGUST 4, 2017



PREPARED FOR:  
 CITY OF QUINCY  
 PREPARED BY:  
 NORFOLK COUNTY ENGINEERING DEPARTMENT  
 649 HIGH STREET, DEDHAM, MA 02026  
 (781)461-6128

**NORFOLK COUNTY - ENGINEERING DEPT.**

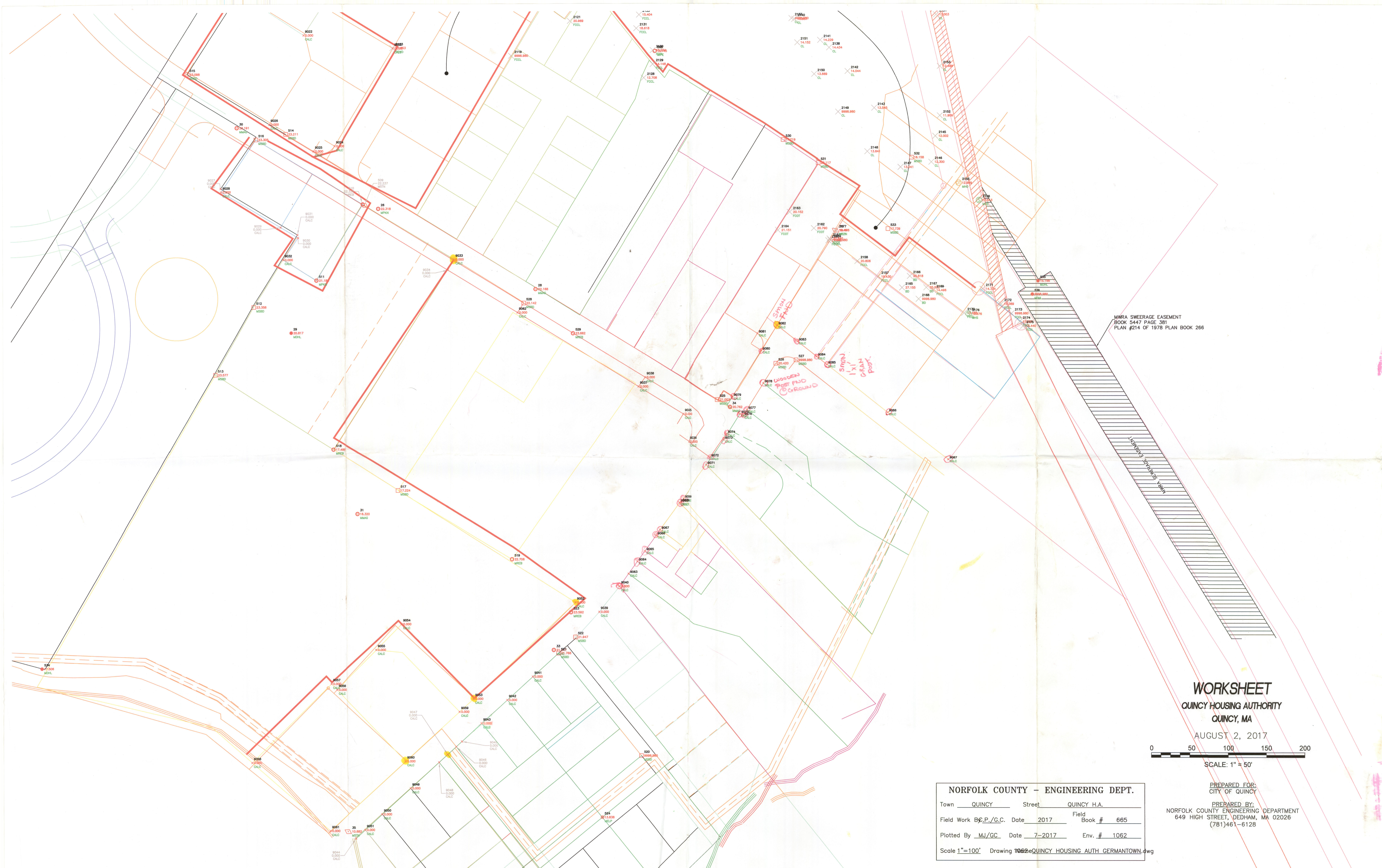
Town	QUINCY	Street	QUINCY H.A.
Field #	665	Date	2017
Plotted By	MD/GS	Book #	1062
Scale	1"=100'	Drawing	1062-QUINCY HOUSING AUTH GERMANTOWN.dwg



NORFOLK COUNTY -- ENGINEERING DEPT.  
 Town QUINCY Street QUINCY H.A.  
 Field Work B.C.P./G.C. Date 2017 Field Book # 665  
 Plotted By M.J./G.C. Date 7-2017 Env. # 1062  
 Scale 1"=100' Drawing 1062-QUINCY HOUSING AUTH GERMANTOWN.dwg

**WORKSHEET**  
 QUINCY HOUSING AUTHORITY  
 QUINCY, MA  
 JULY 26, 2017  
 0 100 200 300 400  
 SCALE: 1" = 100'

PREPARED FOR:  
 CITY OF QUINCY  
 PREPARED BY:  
 NORFOLK COUNTY ENGINEERING DEPARTMENT  
 649 HIGH STREET, DEDHAM, MA 02026  
 (781)461-6128



MWRA SWEERAGE EASEMENT  
 BOOK 5447 PAGE 381  
 PLAN #214 OF 1978 PLAN BOOK 266

**WORKSHEET**  
 QUINCY HOUSING AUTHORITY  
 QUINCY, MA

AUGUST 2, 2017



SCALE: 1" = 50'

<b>NORFOLK COUNTY — ENGINEERING DEPT.</b>			
Town	QUINCY	Street	QUINCY H.A.
Field Work By	P./G.C.	Date	2017
		Field Book #	665
Plotted By	MJ/GC	Date	7-2017
		Env. #	1062
Scale 1"=100' Drawing 1062eQUINCY HOUSING AUTH GERMANTOWN.dwg			

PREPARED FOR:  
 CITY OF QUINCY  
 PREPARED BY:  
 NORFOLK COUNTY ENGINEERING DEPARTMENT  
 649 HIGH STREET, DEDHAM, MA 02026  
 (781)461-6128



**WORKSHEET**  
 MWRA SWEERAGE EASEMENT  
 BOOK 54 QUINCY HOUSING AUTHORITY  
 PLAN #21 OF 1976 PLAN BOOK 288  
 QUINCY, MA

AUGUST 4, 2017  
 0 50 100 150 200  
 SCALE: 1" = 50'

NORFOLK COUNTY - ENGINEERING DEPT.  
 Town QUINCY Street QUINCY H.A.  
 Field Work B.P./G.C. Date 2017 Book # 665  
 Plotted By MJ/GC Date 7-2017 Env. # 1062  
 Scale 1"=100' Drawing 1062 QUINCY HOUSING AUTH GERMANTOWN.dwg

PREPARED FOR:  
 CITY OF QUINCY  
 PREPARED BY:  
 NORFOLK COUNTY ENGINEERING DEPARTMENT  
 649 HIGH STREET, DEDHAM, MA 02026  
 (781)461-6128