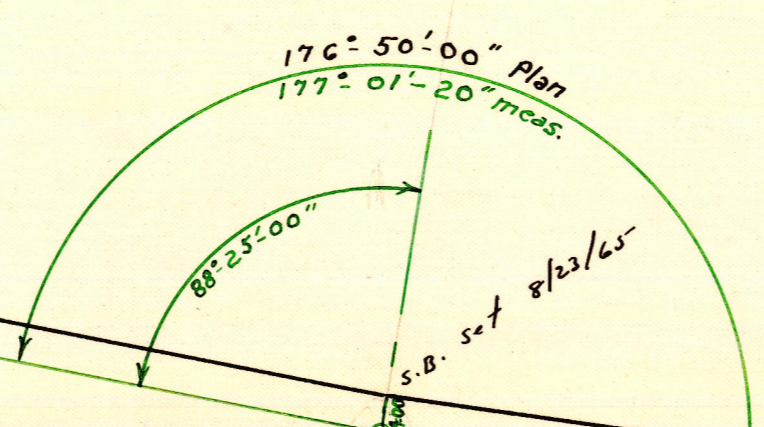
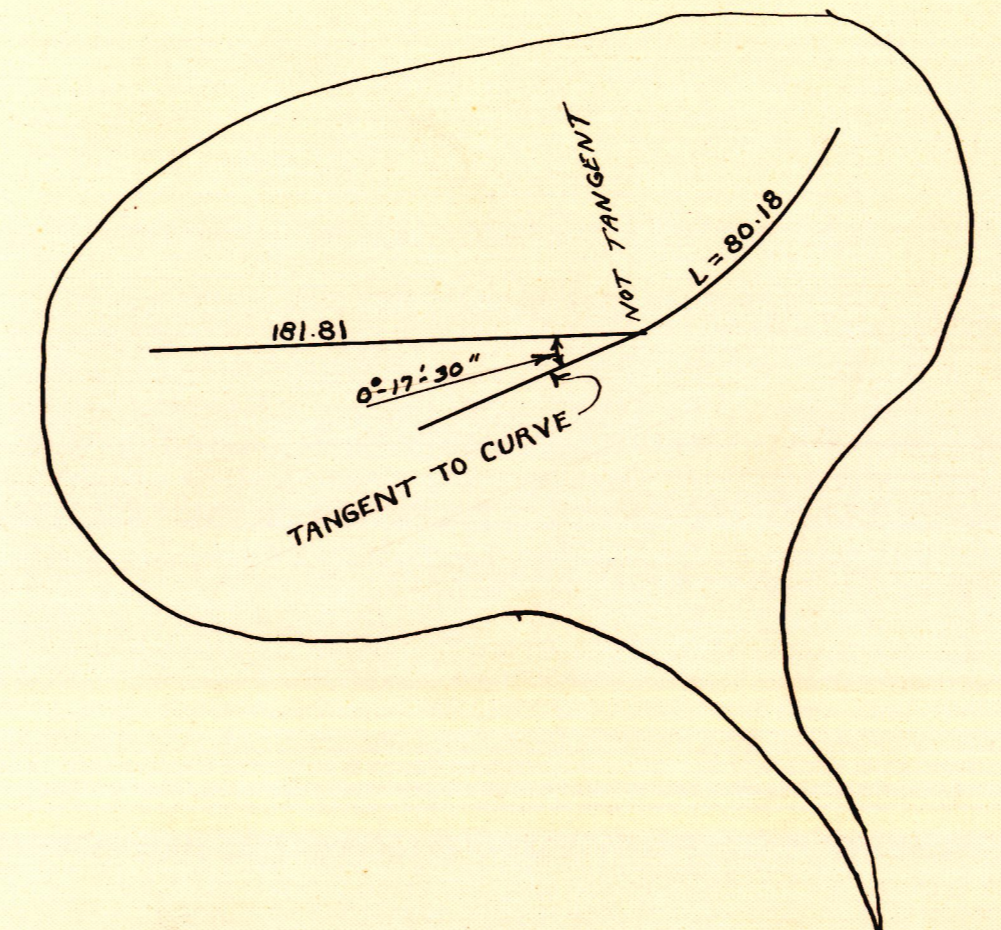
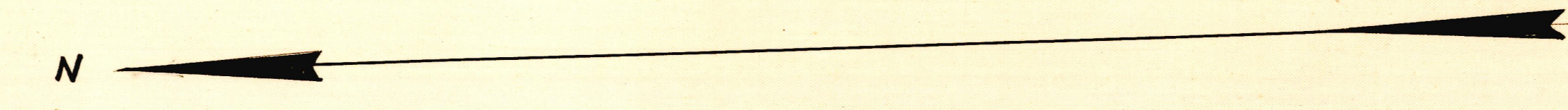
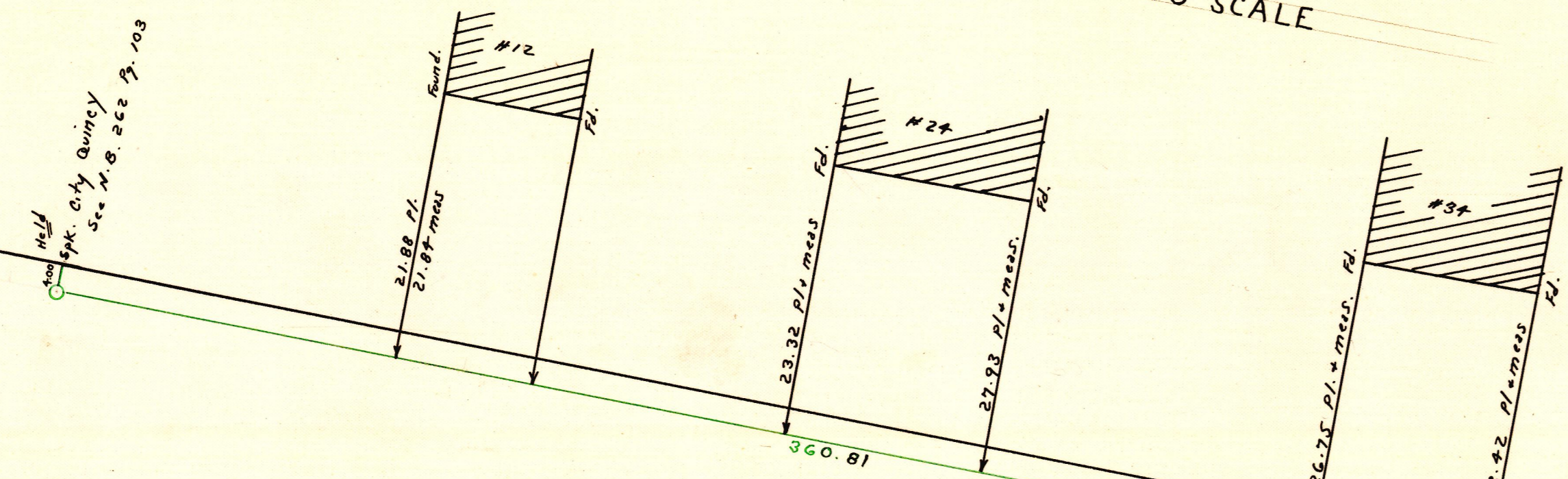


ADAMS ST.

R=25.00
L=32.87
R=23.00

HOUSES AND OFFSETS NOT TO SCALE



181.92 meas
183.00 County Pl.
182.74 branch offset
182.28 branch plan

$\Delta = 12^{\circ} 48'$
 $R = 358.90$
 $T = 40.26$
 $L = 80.18$

$\Delta = 6^{\circ} 44'$
 $R = 385.48$
 $T = 22.68$
 $L = 45.30$

$\Delta = 71^{\circ} 18' 10''$
 $R = 30$
 $T = 21.52$
 $L = 37.33$

$\Delta = 108^{\circ} 11'$
 $R = 25$
 $T = 34.53$
 $L = 47.20$

$\Delta = 12^{\circ} 48'$
 $R = 378.70$
 $T = 44.74$
 $L = 89.12$

$\Delta = 6^{\circ} 44'$
 $R = 345.18$
 $T = 20.32$
 $L = 40.60$

$\Delta = 88^{\circ} 48' 30''$
 $R = 30$
 $T = 28.90$
 $L = 47.02$

$\Delta = 90^{\circ} 11' 30''$
 $R = 30$
 $T = 30.10$
 $L = 47.22$

NORFOLK COUNTY - ENGINEERS DEPT.
Town QUINCY Street COMMON
Survey by F. B. 262 Page 102 -
Plotted by Date Scale 20' = 1"
Checked by Drawer No.
Envelope #577