

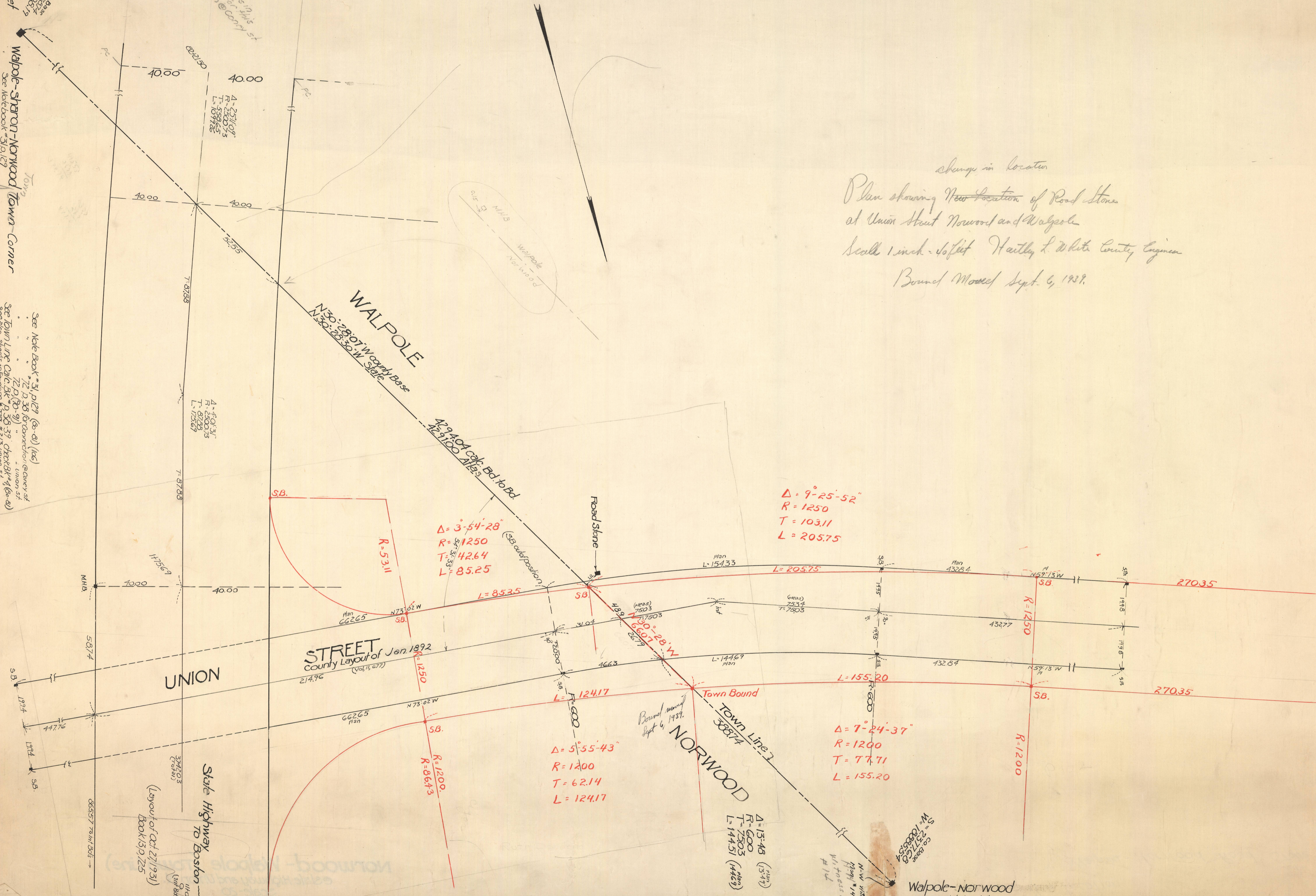
Scale 1 inch = 20 feet

Walpole-Sharon-Norwood Town Corner
See Note Book #31, p. 129

See Note Book #31, p. 129 (80-81) (166)
72, p. 38 for connection @ corner of
72, p. 38-39
See Town Line Calc. Bk #2, p. 59 check Bk #4 (80-81)
See also Streets in Walpole #22, p. 23 union st.
County Base Coords from Calc. Bk #2, p. 188

State Highway to Boston
Layout of Oct. 27, 1931
Book 15, p. 125

change in location
Plan showing New Location of Road Stone
at Union Street Norwood and Walpole
Scale 1 inch = 40 feet Hartley L. White County Engineer
Bound Model Sept. 6, 1939.



STREET
County Layout of Jan. 1892
(Vol. 15, 677)

Town Line
38874
NORWOOD

Walpole-Norwood
See Note book #72, p. 70