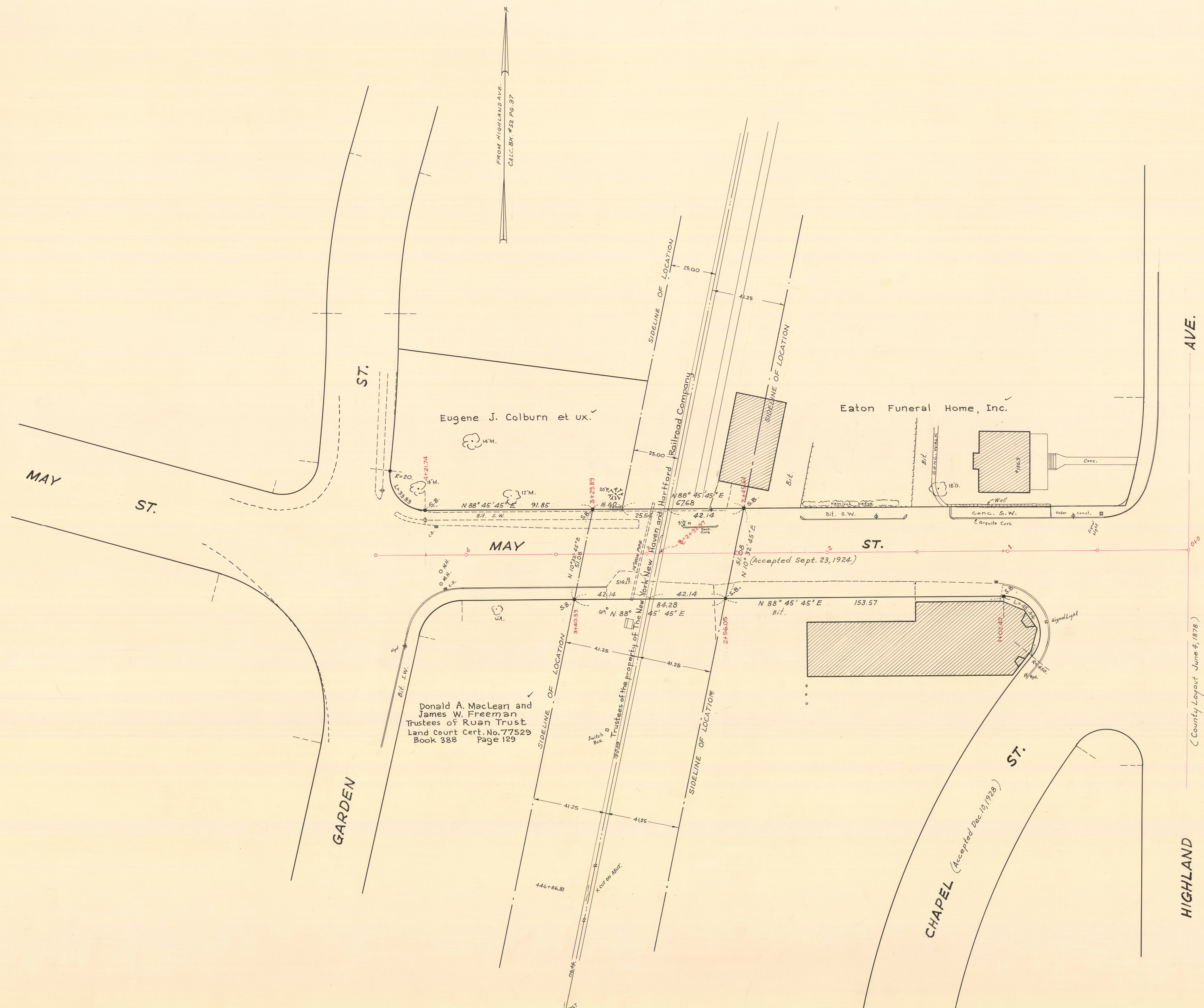


FROM HIGHLAND AVE.
CALC. BY #52 PG. 37



AVE.

(County Layout June 4, 1878)

HIGHLAND

| | | | |
|----------------------------------|-----------|------------|-----|
| NORFOLK COUNTY — ENGINEERS DEPT. | | | |
| Town | NEEDHAM | Street | MAY |
| Date | Nov. 1966 | Scale | 20 |
| Field Book | 113 | House Book | |
| Calc. Book | 52 | Envelope | 419 |

| | | | |
|----------------------------------|-----------|------------|-----|
| NORFOLK COUNTY — ENGINEERS DEPT. | | | |
| Town | NEEDHAM | Street | MAY |
| Date | Nov. 1966 | Scale | 20 |
| Field Book | 113 | House Book | |
| Calc. Book | 52 | Envelope | 419 |