

WINTHROP

Francis D. Donovan et ux

Reginald L. Briggs et ux

Dennis Lally et ux

Hunter + Burgess, Inc.

CHICKEN

BROOK

ST.

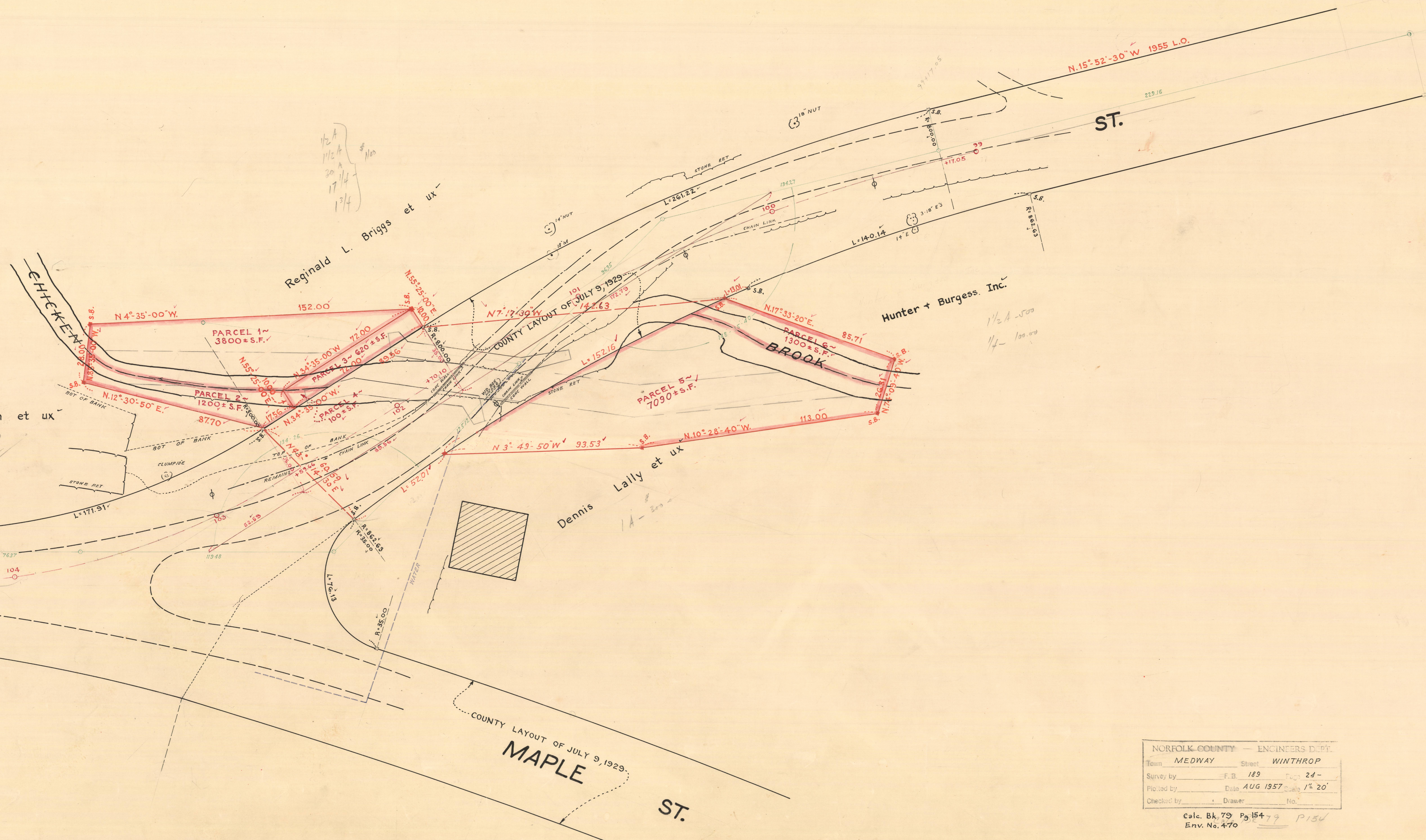
MAPLE

ST.

N.15°52'30"W 1955 L.O.

COUNTY LAYOUT OF JULY 9, 1929

COUNTY LAYOUT OF JULY 9, 1929



NORFOLK COUNTY — ENGINEERS DEPT.	
Town MEDWAY	Street WINTHROP
Survey by F.B. 189	Page 24-
Plotted by Date AUG 1957	Scale 1" = 20'
Checked by	Drawer No.
Calc. Bk. 79 Pg. 154-79 P154	
Env. No. 470	