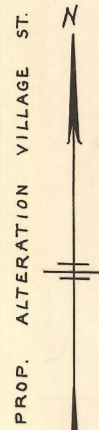


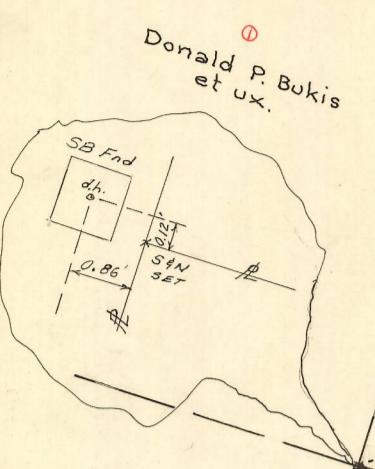
PROP. ALTERATION VILLAGE ST.  
CALC. BOOK 138 PG. 74



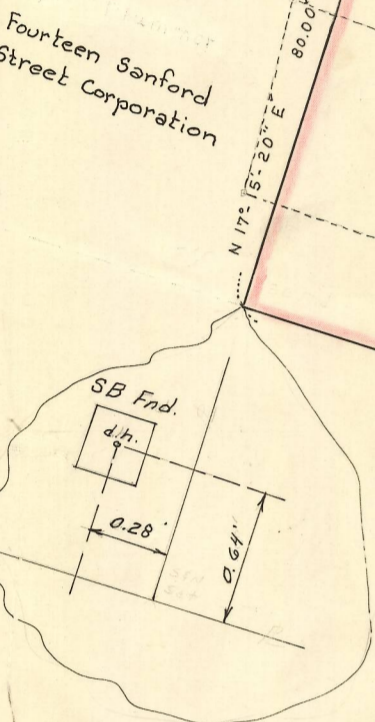
VILLAGE STREET

BROAD STREET  
(COUNTY L.O. NOV. 8, 1921)

STREET



N/F Joseph J. Higgins et ux.  
N/F Evangelical Parish Society of the Medway Village Church (Congregational)



Fourteen Sanford Street Corporation

Gravel Parking Area

Medway Co-operative Bank

Town Hall

The Roman Catholic Church

Archbishop of Boston

Fire House  
NEW ADDITION  
AREA = 66,782 S.F.

Asphalt Parking

Trustees of St. Joseph's Men's Club Building Association

Fourteen Sanford Street Corporation

20' wide SEWER EASEMENT

William F. and Bettye Reardon

MILL STREET (SO CALLED)

SANFORD STREET

RIVER STREET

REVISED - FEB. 2, 1987

NORFOLK COUNTY - ENGINEERS DEPT.	
Town MEDWAY	Street VILLAGE
Date DEC. 1986	Scale 1" = 20'
Field Book 4748 238	House Book #11
Calc. Book	Envelope 442 C