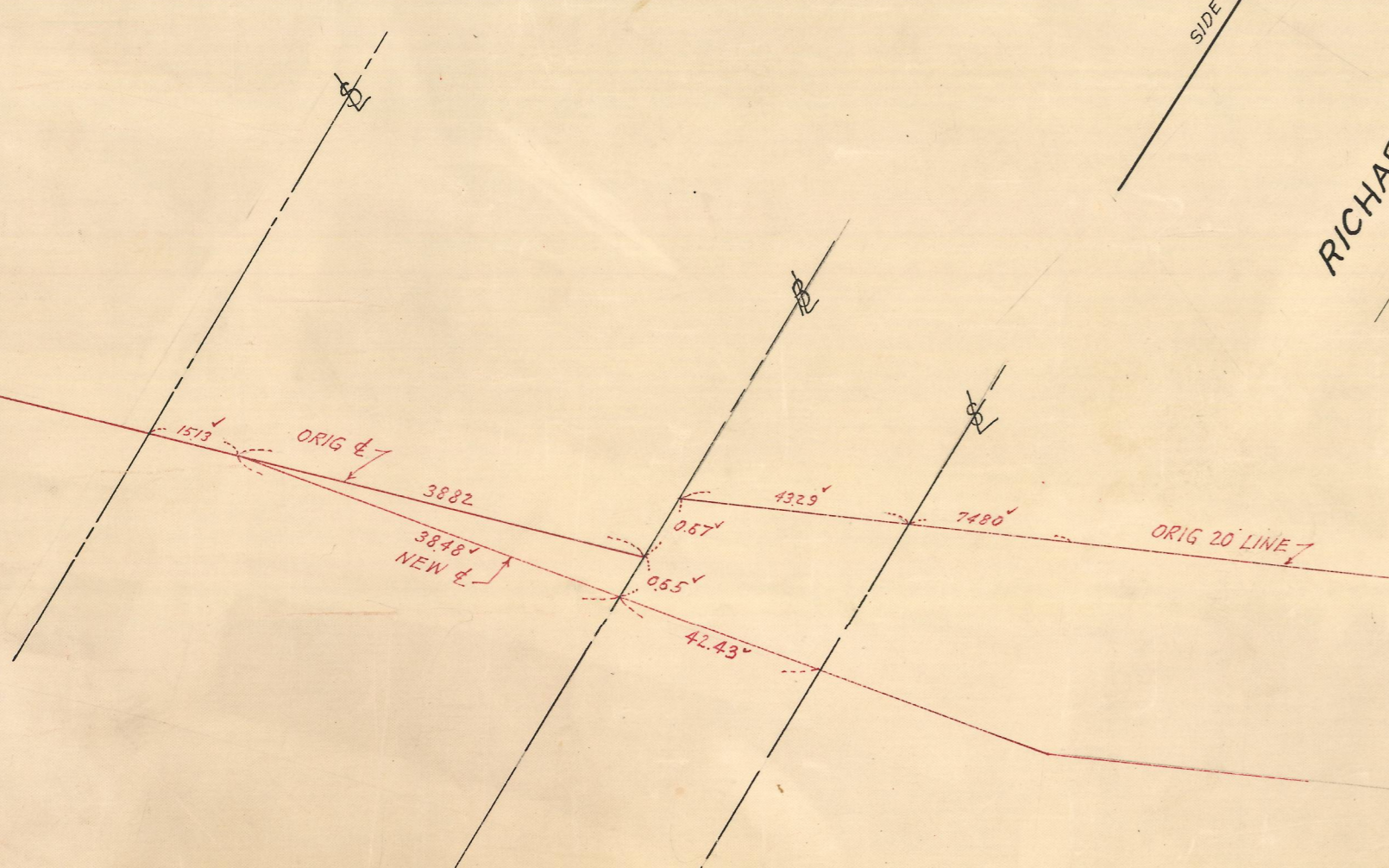


14+29.05'

62.86
191.19
254.05



NORFOLK COUNTY — ENGINEERS DEPT.
 Town MEDWAY Street HOLLISTON @ R.R.
 Survey by F. B. 60 Page 80
 Plotted by Date OCT. 1961 Scale 1" = 20'
 Checked by Drawer No.
 Env. No. 537
 Calc. Bk. 32 Pg. 162

1 INCH = 20 FEET