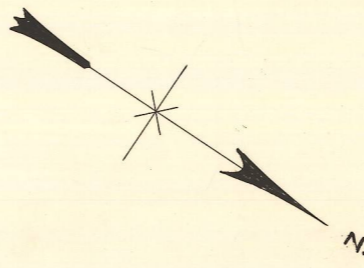


MILLER ST.



PLEASANT ST.

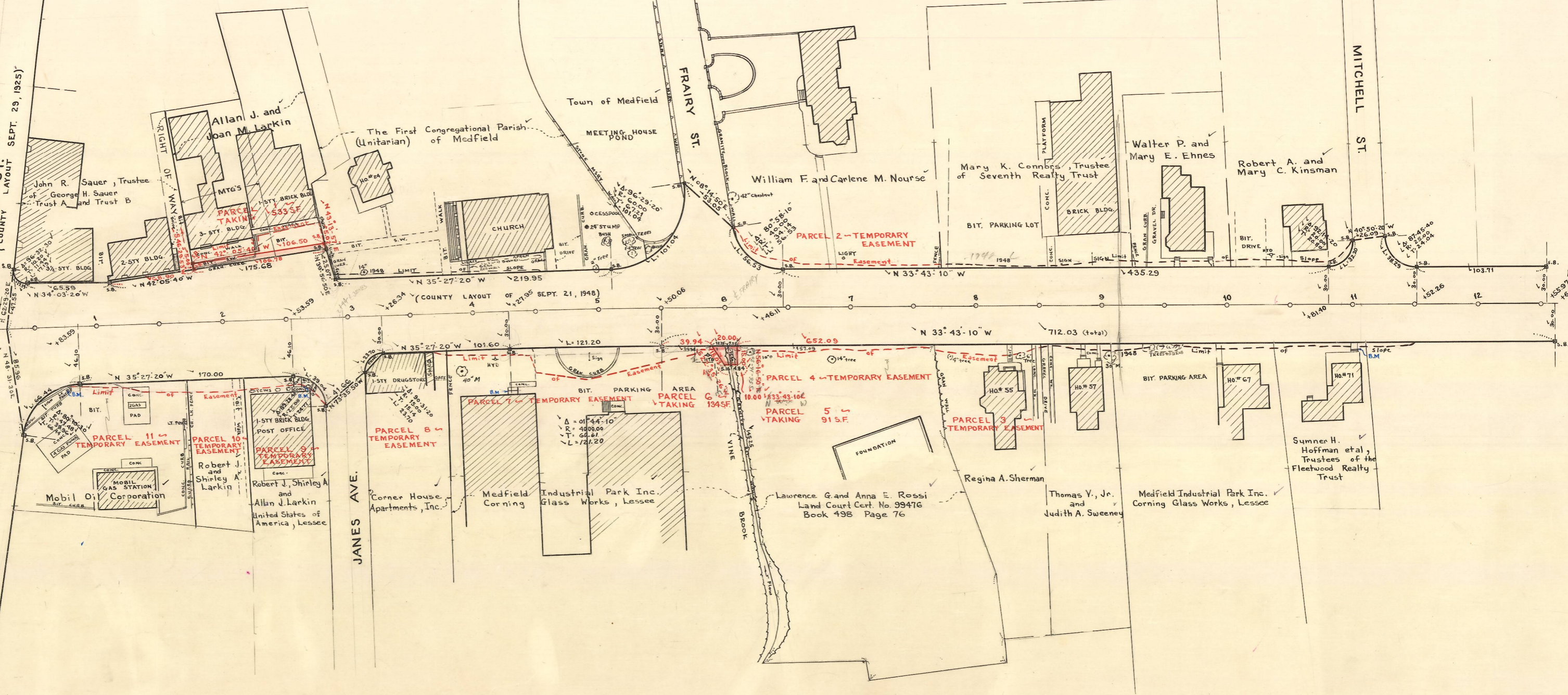
MAIN
(COUNTY LAYOUT NOV. 16, 1926)

ST
(COUNTY LAYOUT SEPT. 29, 1925)

JANES AVE.

FRAIRY ST.

MITCHELL ST.



NORFOLK COUNTY - ENGINEERS DEPT.
 Town Medfield Street North
 Date MARCH 1977 Scale 1" = 40'
 Field Book 106 of 303 House Book —
 Calc. Book 56 pg. 136 Envelope 263 C

(FOR PROFILE SEE MAIN TO SCHOOL ST. PLOT)