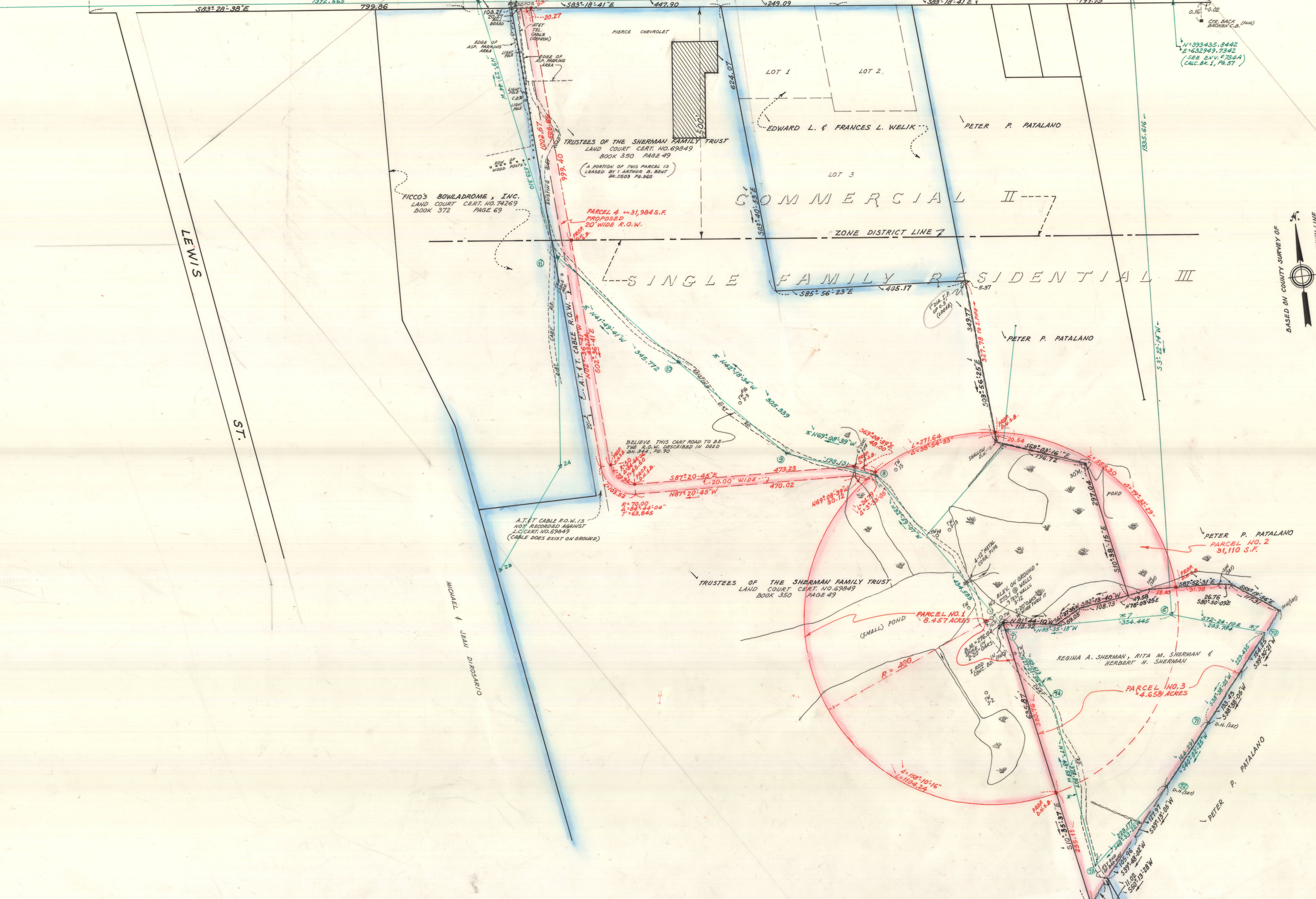


END OF COUNTY LAYOUT  
DATED JUNE 7, 1955



ELEVATIONS BASED ON NATIONAL GEODETIC  
VERTICAL DATUM OF 1929.

NORFOLK COUNTY — ENGINEERS DEPT.  
Town FRANKLIN Job EAST CENTRAL ST.  
Date NOV. 1987 Scale 1 INCH = 80 FEET  
Field Book 472, 484 House Book  
Calc. Book SEE ENV. Envelope 779

REVISED 7/20/88 cte

ELEVATIONS BASED ON NATIONAL GEODETIC  
VERTICAL DATUM OF 1929.

NORFOLK COUNTY — ENGINEERS DEPT.  
Town FRANKLIN Job EAST CENTRAL ST.  
Date NOV. 1987 Scale 1 INCH = 80 FEET  
Field Book 472, 484 House Book  
Calc. Book SEE ENV. Envelope 779

REVISED 7/20/88 cte