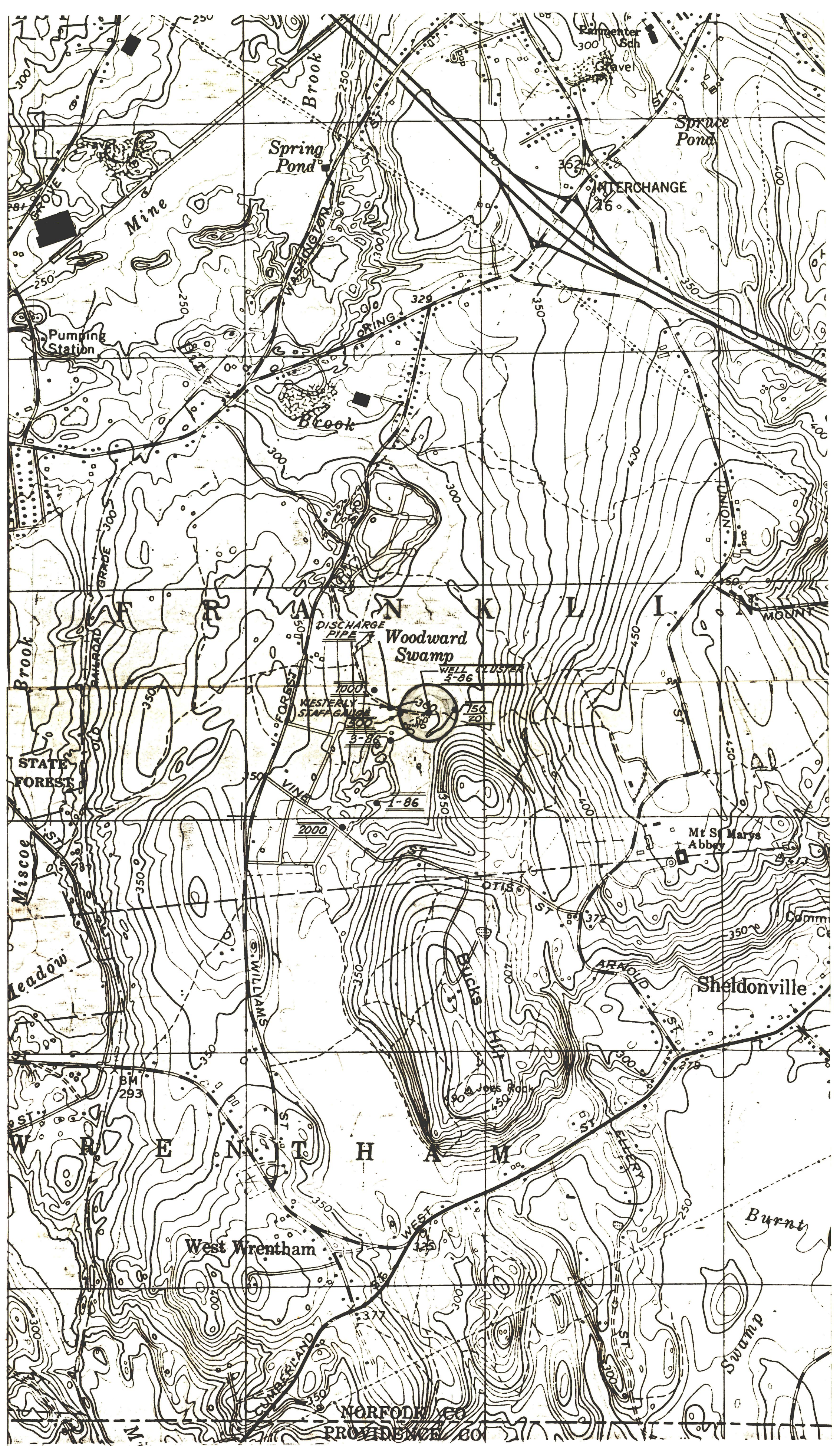


LOCUS MAP
SCALE: 1 INCH = 2000 FEET

NOTE: TOPOGRAPHY TAKEN FROM THE USGS
FRANKLIN QUADRANGLE MAP.



SCALE: 1 INCH = 1000 FEET

TEST WELL (T.W.)	ELEVATION OF TOP
T.W. 5-86	303.94
T.W. 20	303.82
T.W. 50	303.57
T.W. 6-86	301.02
T.W. 7-86	304.30
T.W. 150	298.81
20	
T.W. 8	305.43
T.W. 4-86	311.26
T.W. 500	306.97
T.W. 20-3-86	311.26
T.W. 1000	304.39
T.W. 1-86	312.89
T.W. 2000	327.76

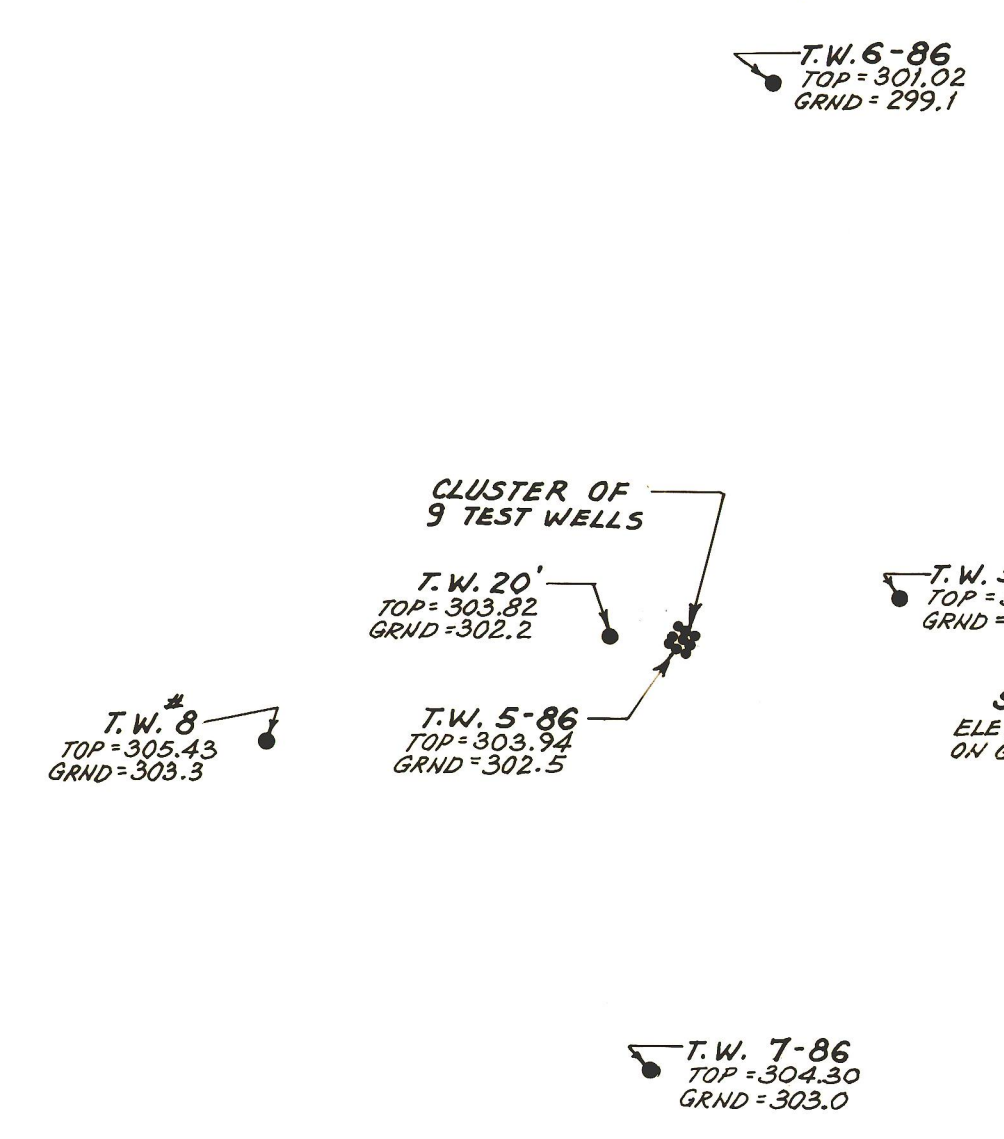
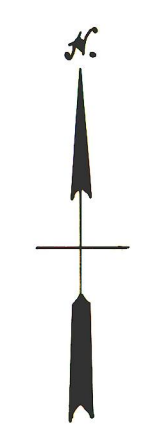
EASTERLY STAFF GAUGE.....297.75 = ELEV. OF 2' MARK
(IN BROOK) ON GAUGE
WESTERLY STAFF GAUGE.....300.46 = ELEV. OF 1' MARK
(EDGE OF BROOK) ON GAUGE

ELEVATIONS BASED ON NATIONAL GEODETIC VERTICAL DATUM OF 1929.

BLOW-UP OF WELL SITE
SCALE: 1 INCH = 40 FEET

ELEVATIONS BASED ON NATIONAL GEODETIC VERTICAL DATUM OF 1929

LEGEND:
T.W. = TEST WELL (TOP)
GRND = GROUND AT WELL



REVISED 1/12/88 BY TED M.

PLAN OF TEST WELLS
TEST SITE NO. 20 - WELL NO. 10
IN
FRANKLIN, MASS.
PREPARED FOR: THE TOWN OF FRANKLIN
SCALE: AS NOTED JANUARY 6, 1988
ALVAH L. DOWNS, COUNTY ENGINEER.