

BOSTON AND PROVIDENCE

(Layout of July 14, 1921)

PIKE

WASHINGTON

Note  
See State No. 84 W 12 Pl. 659 State  
Fred E. Baker ?

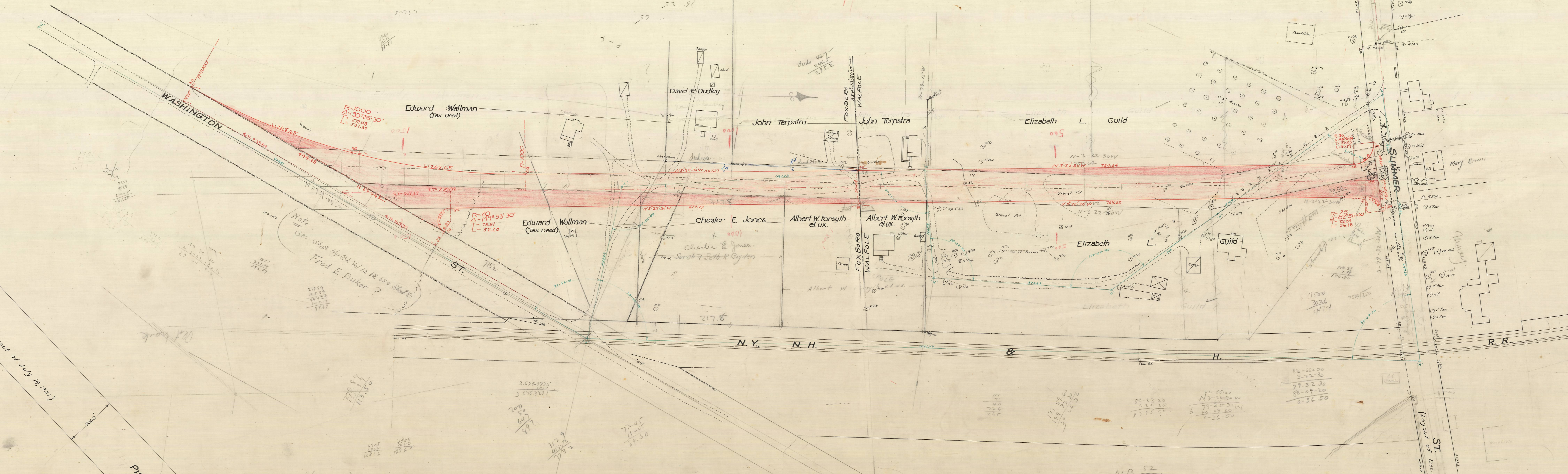
ST. 715

N. Y. N. H.

H.

R. R.

ST. SUMMER  
(Layout of Dec. 19, 1928)



Edward Wallman  
(Tax Deed)

David P. Dudley

John Terpstra

John Terpstra

Elizabeth L. Guild

Edward Wallman  
(Tax Deed)

Chester E. Jones

Albert W. Forsyth  
et ux.

Albert W. Forsyth  
et ux.

Elizabeth L. Guild

Mary Brown

N.B. 52  
C.B. 29