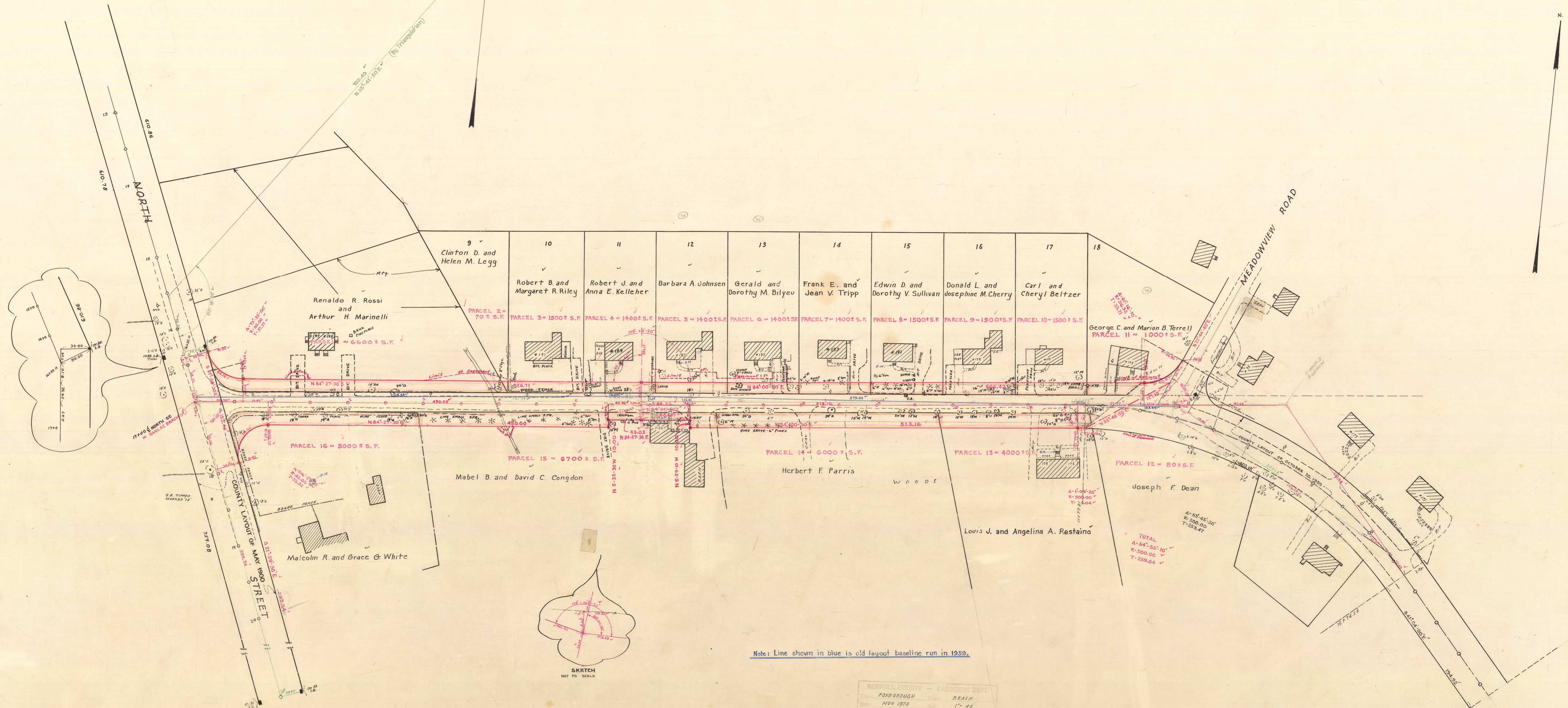
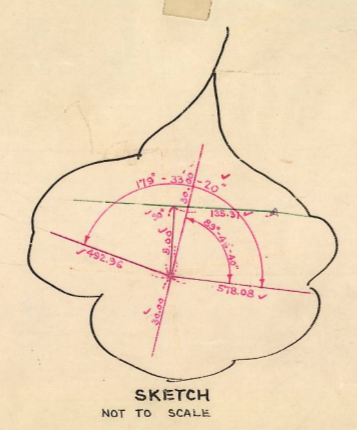


T.L. (2)100 AM.H. 3A

U.S.C. & G.S. FOXBOROUGH TOWN FARM 1887-1936



Note: Line shown in blue is old layout baseline run in 1959.



1978 (60FT. PROPOSAL)

NORFOLK COUNTY — ENGINEERS DEPT.  
 Town: FOXBOROUGH Sheet: BEACH  
 Date: NOV 1970 Scale: 1" = 40'  
 Field Book: 213-251-293 Woods Book:  
 Calc Book: Envelope: 424

NORFOLK COUNTY — ENGINEERS DEPT.  
 Town: FOXBOROUGH Sheet: BEACH  
 Date: NOV 1970 Scale: 1" = 40'  
 Field Book: 213-251-293 Woods Book:  
 Calc Book: 07-97 Envelope: 424

1978 (60FT. PROPOSAL)

NORFOLK COUNTY — ENGINEERS DEPT.  
 Town: FOXBOROUGH Sheet: BEACH  
 Date: NOV 1970 Scale: 1" = 40'  
 Field Book: 213-251-293 Woods Book:  
 Calc Book: Envelope: 424