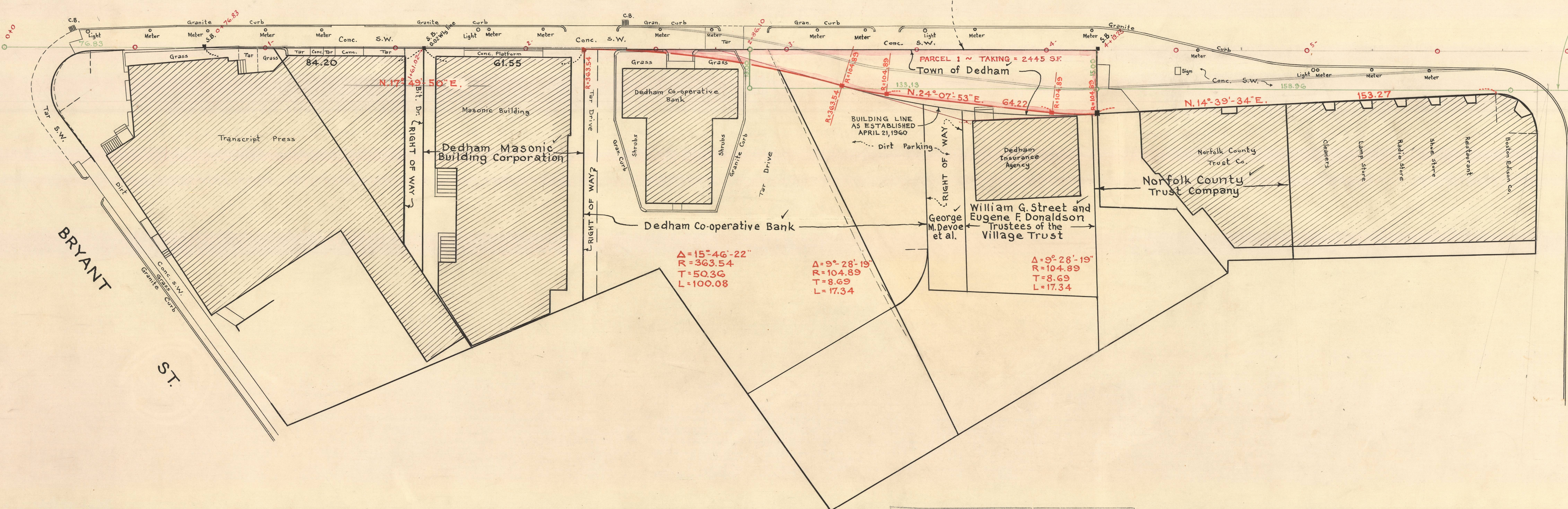


WASHINGTON ST.

COUNTY LAYOUT OF NOV. 26, 1895

ST.

HIGH



$\Delta = 15^{\circ} 46' 22''$
 $R = 363.54$
 $T = 50.36$
 $L = 100.08$

$\Delta = 9^{\circ} 28' 19''$
 $R = 104.89$
 $T = 8.69$
 $L = 17.34$

$\Delta = 9^{\circ} 28' 19''$
 $R = 104.89$
 $T = 8.69$
 $L = 17.34$

NORFOLK COUNTY — ENGINEERS DEPT.
 Town DEDHAM Street WASHINGTON
 Survey by F. B. 265 Page 2-
 Plotted by Date April 1961 Scale 1" = 20'
 Checked by Drawer No.

House Book #6
 Envelope No. 523
 Calc. Book 107 P. 120

110.42

67.53

18.75

44.20

$90^{\circ} 32' 00''$

79.28

BRYANT ST.