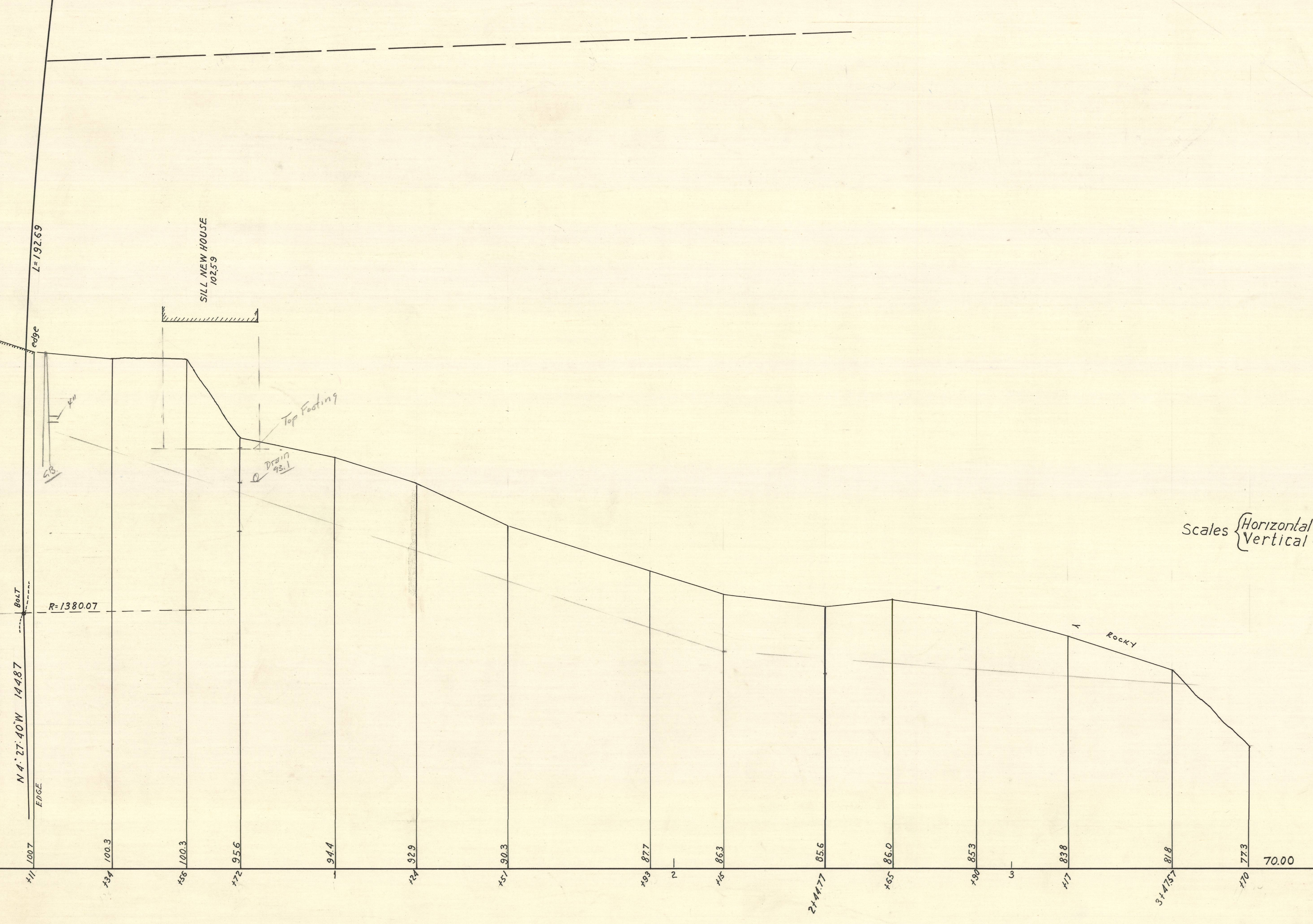
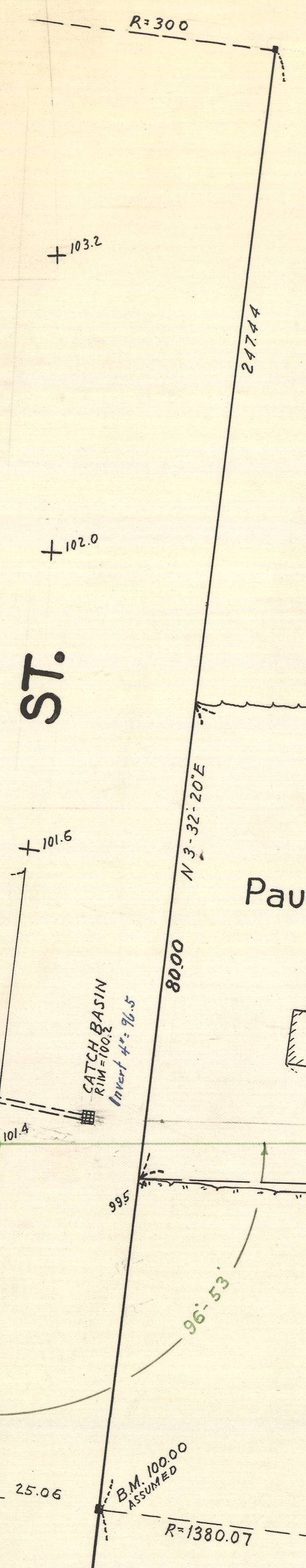


731#81

ST.

HULL

(COUNTY LAYOUT + OF JUNE 1, 1915)



Scales (Horizontal - 20 feet
Vertical - 4")

NORFOLK COUNTY — ENGINEERS DEPT.
 Town COHASSET Street HULL
 Survey by CAIN F.B. 132 Page 46
 Plotted by _____ Date JAN. 1950 Scale 1" = 20'
 Checked by _____ Drawer _____ No. _____

ENVELOPE #27
 CALC BK"