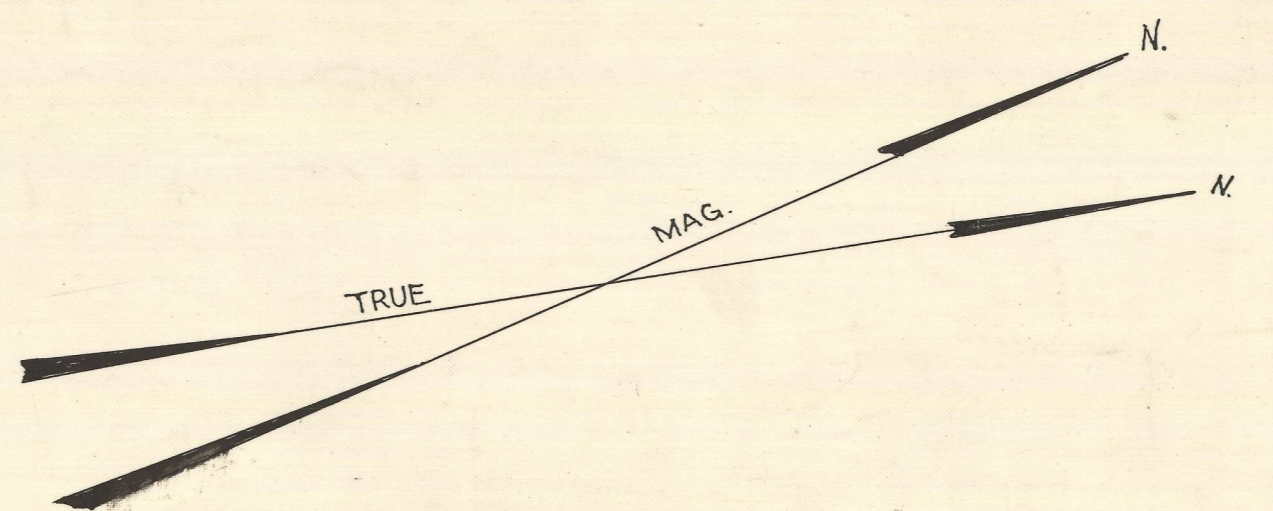
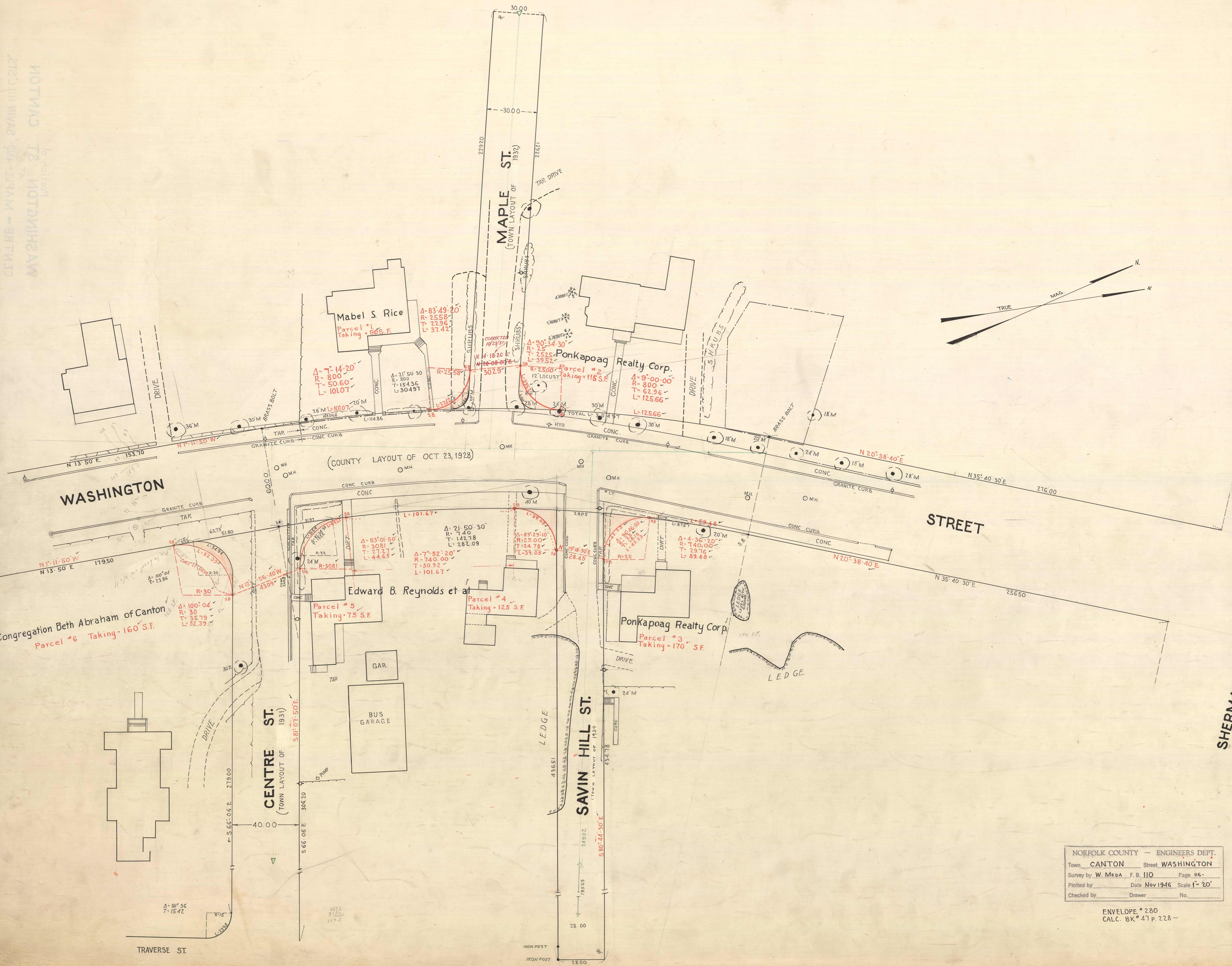


NOTICE OF LOCATION
WASHINGTON ST.



NORFOLK COUNTY — ENGINEERS DEPT.
Town CANTON Street WASHINGTON
Survey by W. MEDA F.B. 110 Page 116-
Plotted by Date Nov 1946 Scale 1" = 20'
Checked by Drawer No.

ENVELOPE # 280
CALC. BK # 47 p. 228-

ST.

SHERMAN