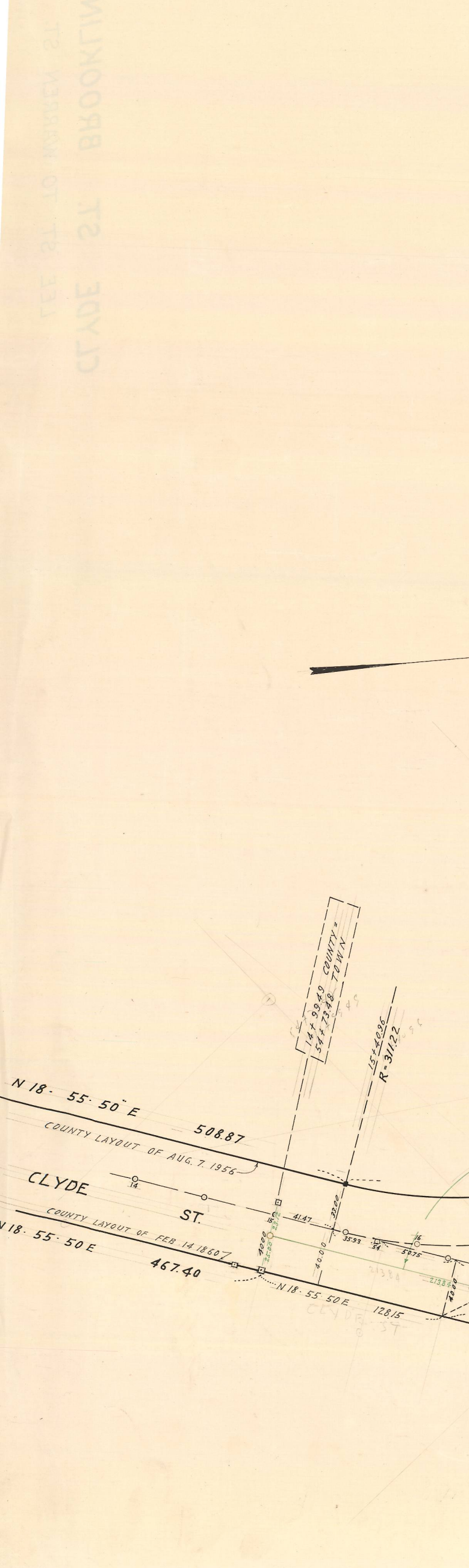


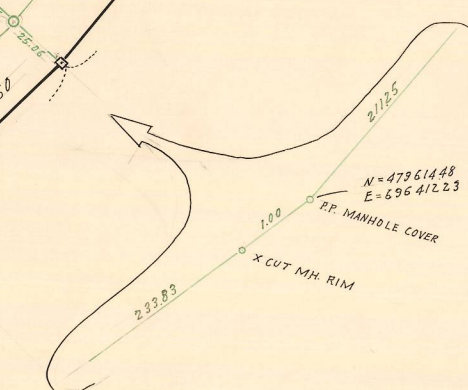
CLYDE ST. BROOKLINE



$\Delta = 58.9510$
 $R = 311.22$
 $T = 172.82$
 $L = 315.51$

CLYDE ST.
 COUNTY LAYOUT OF FEB 14 1888

LEE ST.
 TOWN LAYOUT OF FEB 1912



NORFOLK COUNTY — ENGINEERS DEPT.
 TOWN: BROOKLINE Street: CLYDE ST.
 Date: NOV. 1965 Scale: 1" = 40'
 Plot Book: #215 Maps Book:
 Calc. Book: Envelope: #606

NORFOLK COUNTY — ENGINEERS DEPT.
 TOWN: BROOKLINE Street: CLYDE ST.
 Date: NOV. 1965 Scale: 1" = 40'
 Plot Book: #215 Maps Book:
 Calc. Book: Envelope: #606

NBA 215