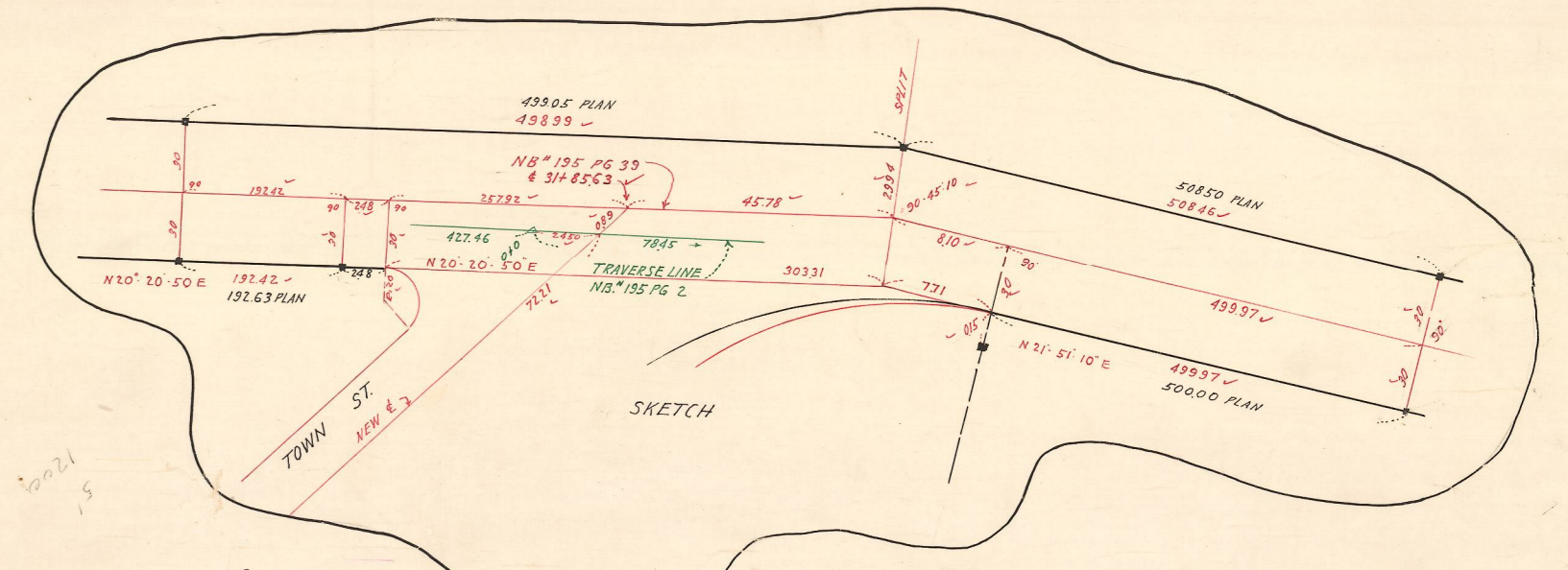
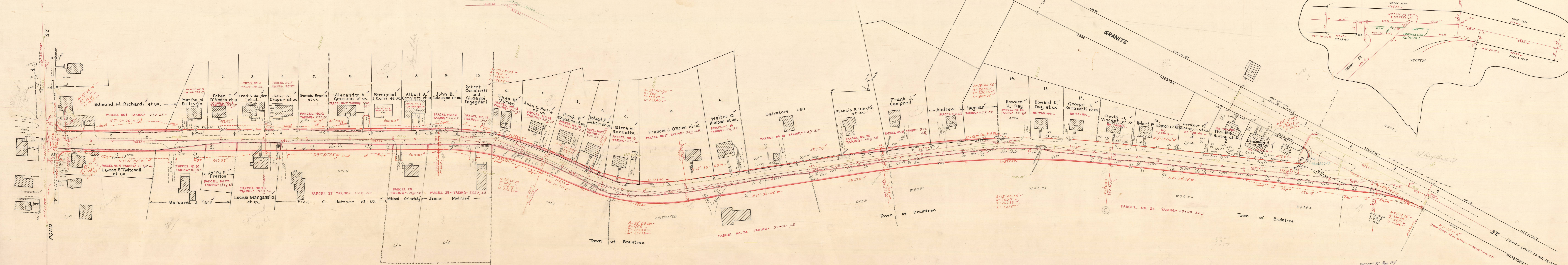




FROM 125.0' - 125.0' PERMANENT ST
CALC. BY T. F. 12. 12. 14



CALC. BY T. F. 12. 12. 14
ENVELOPE # 394
NORFOLK COUNTY - ENGINEERS D. PT.
TOWN OF BRAINTREE - SHEET TOWN
Survey by FEAKES, F. B. 1915
Checked by _____ Date APRIL 1916 Scale 1 in = 40 ft.

CALC. BY T. F. 12. 12. 14
ENVELOPE # 394
NORFOLK COUNTY - ENGINEERS D. PT.
TOWN OF BRAINTREE - SHEET TOWN
Survey by FEAKES, F. B. 1915
Checked by _____ Date APRIL 1916 Scale 1 in = 40 ft.